

GRADUATION RATES AND TIME-TO-DEGREE BY MAJOR

EXECUTIVE SUMMARY

The *Graduation Rates and Time-To-Degree* report summarizes the percentages of continuing third-year native UCSC students in each department on campus who graduate in their declared major or in a different major, and the average numbers of enrolled and elapsed quarters it takes native students to earn a degree by department. Highlights include:

Undeclared Students:

In recent years a considerable minority of native UCSC students (approximately 18%) had not declared a major by the beginning of their third year. Among third-year continuing students, roughly 25% had not achieved junior status (earned 90 units), and these students accounted for a disproportionately large share of the undeclared majors. On average 35% of third-year students who had not achieved junior status had also not declared a major, compared to only 9% of those who had earned 90 or more units.

Students who had not declared a major by the time they were beginning their third year were far less likely to graduate within four years than were those who had (36% vs. 74%). Although the gap between “declareds” and “undeclareds” in six-year graduation rates narrowed (74% vs. 90%), it never the less remained, suggesting that students who have not declared a major by the beginning of their third year may be at greater risk of attrition.

Graduation Rates:

Among “declared” third-year students, 57% graduated within four years in the same major that they had declared at the start of the third year, while an additional 7% graduated in a different major. Within six years 78% had graduated in their declared major and 12% in another major.

Humanities and Social Sciences majors were considerably more likely to graduate within four years than were majors in the Arts, Natural Sciences, or Engineering. Four-year graduation rates were 71% of Humanities majors (65% in the same department), and 69% of Social Sciences majors (63% in the same department), compared with 58% of Arts majors (48% in the same department), 53% of Natural Sciences majors (47% in the same department), and 47% of Engineering majors (44% in the same department).

Differences between divisions in six-year graduation rates were considerably smaller (Social Sciences = 92%, Humanities = 91%, Arts = 88%, Natural Sciences = 88%, Engineering = 81%). However the percentages of students who graduated in a different department than the one they had declared at the start of their third year were substantially higher for Engineering majors (19%), Arts majors (18%), and Natural Science majors (16%) than they were for majors in the Social Sciences (9%) or the Humanities (8%).

Time-To-Degree

Among students who first enrolled at UCSC as new freshmen, the most recent five years of graduates enrolled in 12.4 quarters on average. The shortest average time-to-degree was for students graduating with a degree in the Humanities (12.1), the Social Sciences (12.2), and the Arts (12.5), compared to 13.4 average enrolled quarters for Natural Sciences, and 13.5 for Engineering graduates.

GRADUATION RATES AND TIME-TO-DEGREE BY DEPARTMENT

Definitions and Explanations

Introduction

This report presents graduation rates and the average time-to-degree for students who first enrolled at UCSC by department. It is intended to supplement the annual *Retention and Graduation Update*, which summarizes trends in retention and graduation rates for freshmen and transfer cohorts, and by residential college, ethnicity, gender, admission type, residency status, and SAT score ranges.

Retention and graduation statistics have not previously been calculated by major because UCSC does not admit students to a major at the time they are admitted to the campus. Although students indicate an intended major on their application, almost no new students have an actual declared major to which they have formally petitioned and been admitted. Moreover, a sizable minority of new students (41% of new freshmen and 6% of new transfers in Fall 2001) was uncertain of even their intended major. Mirroring national trends the percentage of “undeclareds” has been growing over the past several years. Tracking students by initial intended major then may be of limited value.

By the time students are juniors however, they are expected to have a major. In fact, after students have earned 90 units (achieved junior status) they are barred from registering for classes until they declare a major. Students who first matriculate as new freshmen and who take at least a regular full-time courseload (15 units per quarter) for two years, should have earned 90 units, and thus should have declared a major by the beginning of their third year.

The purpose of this report is to provide comparative statistics on student performance across departments and divisions. Statistics are presented for cohorts of continuing third-year students by department. Students are at the greatest risk of attrition between the first and second, and the second and third years; retention rates improve dramatically among students who persist to the third year¹. Graduation rates and average time-to-degree, but not retention rates are presented here.

Third Year Department Cohorts

For any given year, the third-year cohort was defined as all students who were in attendance at the end of the third week of instruction of the fall quarter, and who had first matriculated as a new freshman two fall quarters previously. Students who first enrolled as transfers, in the high school honors program, as limited status (non-degree seeking), or during a winter or spring quarter were excluded from these analyses.

The third-year cohorts were segregated into the departments in which they had declared majors. Departments that sponsor multiple majors were credited with students in all of their majors. Students with multiple majors were counted in all of them. Thus for example, a student double-majoring in Environmental Studies and Biology was included in both the Environmental Studies and the Biology cohorts.

¹ See the most recent *Graduation and Retention Update*, available at http://planning.ucsc.edu/irps/Enrollmt/ucsc_retention_graduation00-01.pdf

Graduation Rates

Four-, five-, and six-year graduation rates indicate the percentages of students in the third year department cohorts that had graduated within the specified number of years *from the time they first enrolled as freshmen*. Summer graduates were counted with the previous rather than the following year. For example a student who graduated during the summer quarter following the end of their fourth regular academic year were counted as 4-year, and not 5-year graduates. For each department the total percentage of students who had graduated are presented, as well as the percentage of students who had graduated in the department of their declared major at the time they were third-year students and the percentage who had graduated in a different department.

Graduation rates based on small numbers of students (fewer than 100) are more sensitive to small fluctuations than those based on larger numbers, and therefore may vary dramatically from year to year. Because the numbers of some third-year department cohorts are quite small, five-year aggregate rates were calculated. The graduation rates presented in this report are based on the five most recent cohorts for whom statistics could have been calculated. Thus 4-year graduation rates were based on the 1995-1999 third-year cohorts (or students who were new freshmen in 1993-1997), five-year rates on the 1992-1996 third-year cohorts, and six-year rates on the 1991-1995 cohorts. Although collapsing across cohort year may obscure year-to-year variation, it allows for more reliable statistics for small departments. Statistics for departments with fewer than 100 majors, even after combining cohort years, should be interpreted cautiously.

Divisional and Campus Total Graduation Rates

Divisional and campus totals are also presented for comparison. Divisional graduation rates are an aggregate of all of the departments within a division. In the divisional statistics, students who graduate in a major other than the one they have declared at the beginning of their third year, even if it is in the same division, are counted as having graduated in another department. For example, a student who had declared a biochemistry major as of the fall quarter of their third year, but who ultimately graduated in biology would be counted as graduating in a different department.

The campus graduation rates presented in this report are for continuing third-year students who had a declared major. Students who were still undeclared at the beginning of their third year were excluded from the campus rates. Excluding undeclared students from the campus total provides a more meaningful comparison for individual departments.

Time-To-Degree

There are two measures of time-to-degree attainment: the total number of quarters elapsed from when a student first enrolls until she or he graduates (elapsed quarters); and the total number of quarters in which a student enrolls (quarters enrolled). Averages of both measures are presented by department. Summer quarters were counted in the number of enrolled quarters for students who attended summer session, but were not in the number of elapsed quarters unless a student graduated during the summer.

Time-to-degree statistics were not based on cohorts, but rather on the previous five years of graduates within each department regardless of when they first entered or what their major was at the beginning of their third year. The only criterion was that students had to have initially entered UCSC as a new freshman and not a transfer. When interpreting time-to-degree it is important to keep in mind that statistics are based on students who graduated in a particular department, regardless of how many, or which other majors they may have pursued prior to settling on the one(s) they ultimately graduated in.

Graduation Rates and TTD by Department

Graduation Rates for Continuing Third-Year Undergraduates by Division

	Arts			School of Engineering			Humanities			Natural Sciences		
	4-YR	5-YR	6-YR	4-YR	5-YR	6-YR	4-YR	5-YR	6-YR	4-YR	5-YR	6-YR
Graduation Rates												
In Declared Dept.	47.6%	64.9%	69.6%	44.3%	65.0%	62.1%	64.8%	81.2%	82.8%	46.5%	66.9%	71.8%
In Another Dept.	10.8%	18.4%	18.3%	2.9%	11.0%	18.5%	6.4%	7.9%	8.1%	6.4%	13.9%	15.7%
Total	58.4%	83.3%	88.0%	47.2%	76.0%	80.6%	71.2%	89.1%	90.9%	52.9%	80.9%	87.5%
No. in Cohorts	805	738	666	140	100	108	922	888	878	904	950	1,046

	Social Sciences			Individual Studies			Undeclared			Campus		
	4-YR	5-YR	6-YR	4-YR	5-YR	6-YR	4-YR	5-YR	6-YR	4-YR	5-YR	6-YR
Graduation Rates												
In Declared Dept.	62.7%	79.0%	83.1%	53.8%	84.0%	84.0%	0.0%	0.0%	0.0%	57.2%	74.6%	78.2%
In Another Dept.	5.9%	8.7%	8.6%	0.0%	0.0%	4.0%	36.0%	65.6%	73.7%	6.7%	11.1%	11.6%
Total	68.6%	87.7%	91.7%	53.8%	84.0%	88.0%	36.0%	65.6%	73.7%	63.9%	85.6%	89.8%
No. in Cohorts	2,202	2,086	2,041	26	25	25	899	848	825	4,999	4,787	4,765

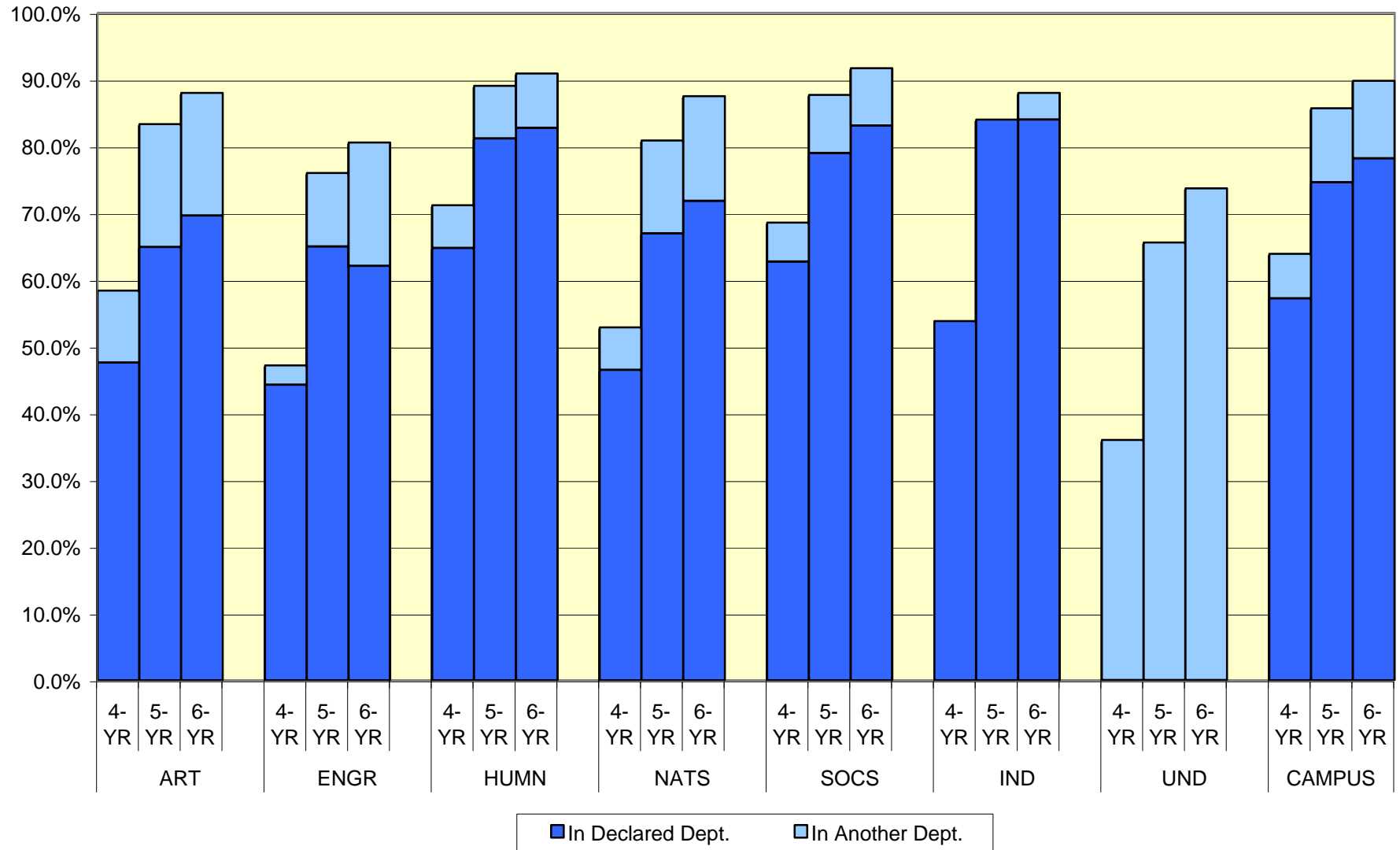
4-year graduation rates are based on the 1995-1999 3rd-year dept. cohorts. 5-year rates are based on the 1994-1998 cohorts, and 6-year rates on the 1993

Average Time-to-Degree by Division

	Arts	Engr	Humn	NatSci	SocSci	IND	Campus
Enrolled Quarters	12.5	13.5	12.1	13.4	12.2	12.2	12.4
Elapsed Quarters	12.9	14.0	12.8	13.6	12.7	13.8	12.9
No. of Graduates	679	171	1,106	868	2,283	48	5,193

Average Enrolled and Elapsed Quarters are based on 1996/1997 - 2000/2001 graduates who first enrolled at UCSC as new freshmen.

Graduation Rates of Continuing 3rd-Year Undergraduates by Division



Graduation Rates and TTD by Department

Arts Division

Graduation Rates for Continuing Third-Year Undergraduates by Department

	ART			ARTH			FIDM			MUSC		
	4-YR	5-YR	6-YR	4-YR	5-YR	6-YR	4-YR	5-YR*	6-YR*	4-YR	5-YR	6-YR
In Declared Dept.	37.1%	56.8%	64.3%	75.0%	96.7%	89.4%	63.4%	77.8%	82.5%	44.3%	73.8%	81.1%
In Another Dept.	13.0%	21.0%	20.6%	0.0%	0.0%	6.4%	7.6%	9.4%	9.5%	12.9%	23.0%	17.0%
Total	50.1%	77.8%	85.0%	75.0%	96.7%	95.7%	70.9%	87.2%	92.0%	57.1%	96.7%	98.1%
No. in Cohorts	439	419	373	28	30	47	172	117	63	70	61	53

	THEA			Arts Division			Campus		
	4-YR	5-YR	6-YR	4-YR	5-YR	6-YR	4-YR	5-YR	6-YR
In Declared Dept.	61.5%	68.5%	66.9%	47.6%	64.9%	69.6%	57.2%	74.6%	78.2%
In Another Dept.	8.3%	20.7%	20.8%	10.8%	18.4%	18.3%	6.7%	11.1%	11.6%
Total	69.8%	89.2%	87.7%	58.4%	83.3%	88.0%	63.9%	85.6%	89.8%
No. in Cohorts	96	111	130	805	738	666	4,999	4,787	4,765

4-year graduation rates are based on the 1995-1999 3rd-year dept. cohorts. 5-year rates are based on the 1994-1998 cohorts, and 6-year rates on the 1993

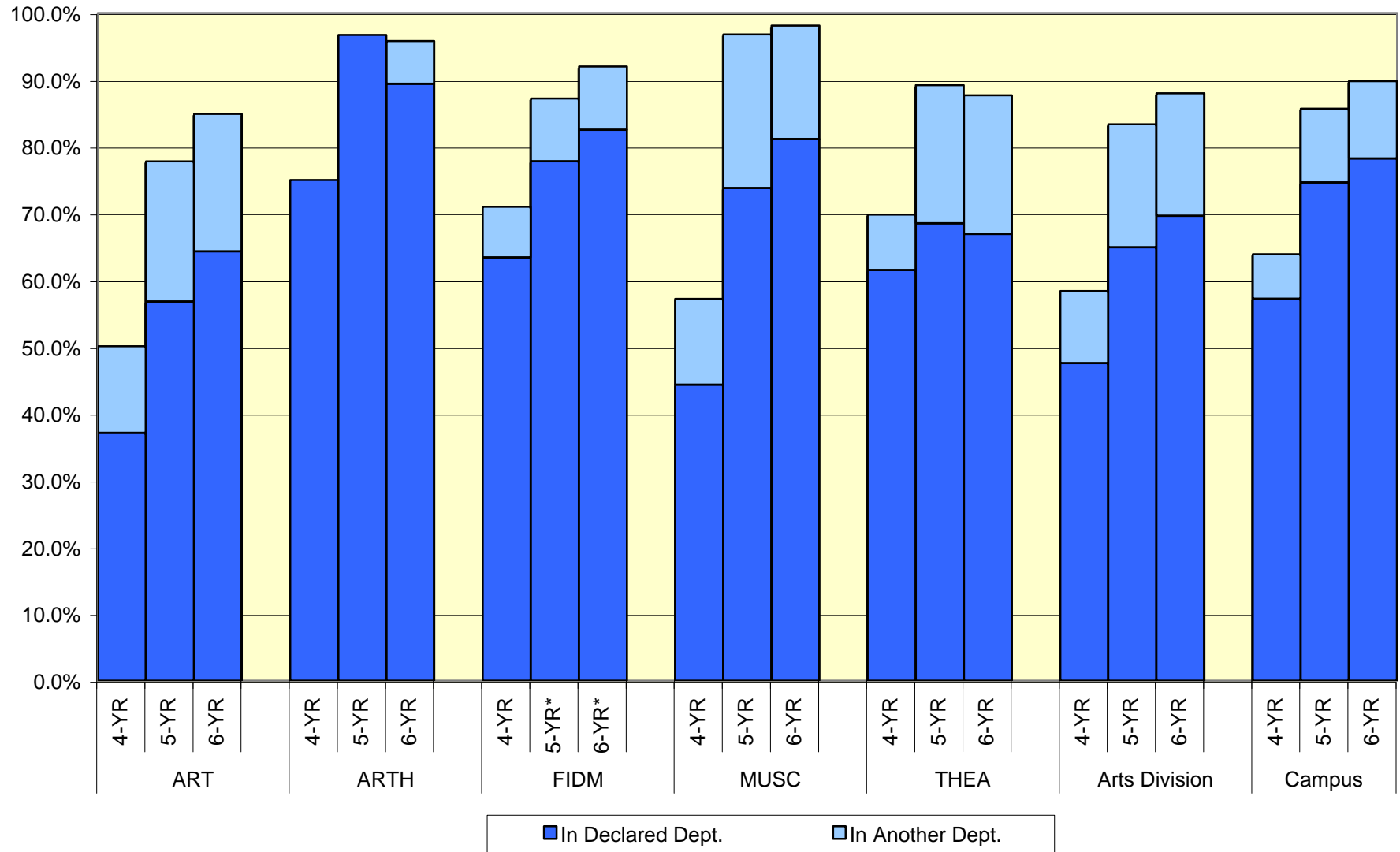
*Because 1995 was the first year that Film/Film and Digital Media had declared majors the 5- and 6-year graduation rates are based on only four (1995-1998) and three (1995-1997) cohorts respectively.

Average Time-to-Degree by Department

	ART	ARTH	FIDM	MUSC	THEA	Division	Campus
Enrolled Quarters	12.5	12.3	12.5	12.8	12.2	12.5	12.4
Elapsed Quarters	13.1	13.0	12.7	13.2	12.6	12.9	12.9
No. of Graduates	274	53	180	67	105	679	5,193

Average enrolled and elapsed quarters are based on 1996/1997 - 2000/2001 graduates who first entered UCSC as new freshmen.

**Graduation Rates of Continuing 3rd-Year Undergraduates by Department
Art Division**



Graduation Rates and TTD by Department

School of Engineering

Graduation Rates for Continuing Third-Year Undergraduates by Department

Graduation Rates	CMPE			CMPS			School of Engineering			Campus		
	4-YR	5-YR	6-YR	4-YR	5-YR	6-YR	4-YR	5-YR	6-YR	4-YR	5-YR	6-YR
In Declared Dept.	35.6%	63.6%	56.9%	50.6%	66.1%	66.7%	44.3%	65.0%	62.1%	57.2%	74.6%	78.2%
In Another Dept.	5.1%	4.5%	21.6%	1.2%	16.1%	15.8%	2.9%	11.0%	18.5%	6.7%	11.1%	11.6%
Total	40.7%	68.2%	78.4%	51.9%	82.1%	82.5%	47.2%	76.0%	80.6%	63.9%	85.6%	89.8%
No. in Cohorts	59	44	51	81	56	57	140	100	108	4,999	4,787	4,765

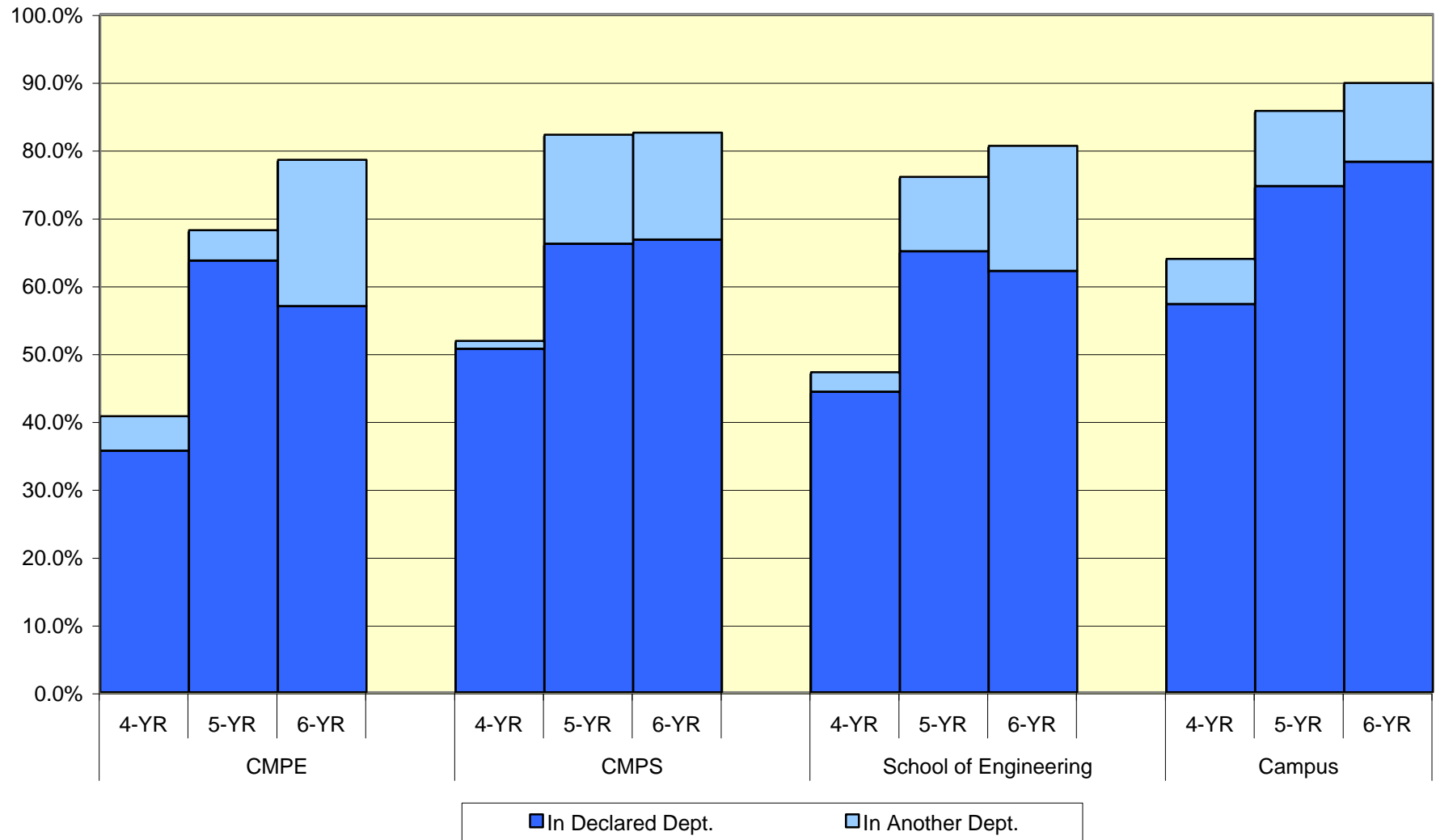
4-year graduation rates are based on the 1995-1999 3rd-year dept. cohorts. 5-year rates are based on the 1994-1998 cohorts, and 6-year rates on the 1993-1997 cohorts

Average Time-to-Degree by Department

	CMPE	CMPS	School	Campus
Avg. Enrolled Qrts.	13.4	13.6	13.5	12.4
Avg. Elapsed Qrts.	13.5	14.2	14.0	12.9
No. of Graduates	56	115	171	5,193

Average Enrolled and Elapsed Quarters are based on 1996/1997 - 2000/2001 graduates who first enrolled at UCSC as new freshmen.

**Graduation Rates of Continuing Undergraduates by Department
School of Engineering**



Graduation Rates and TTD by Department

Humanities Division

Graduation Rates for Continuing Third-Year Undergraduates by Department

	AMST			HIS			LING			LIT		
	4-YR	5-YR	6-YR	4-YR	5-YR	6-YR	4-YR	5-YR	6-YR	4-YR	5-YR	6-YR
Graduation Rates												
In Declared Dept.	70.9%	79.6%	81.8%	66.8%	83.8%	84.8%	56.3%	79.7%	87.8%	66.7%	81.5%	81.5%
In Another Dept.	2.7%	3.7%	4.5%	6.9%	7.3%	8.2%	12.6%	13.9%	12.2%	6.0%	7.4%	8.0%
Total	73.6%	83.3%	86.4%	73.7%	91.0%	93.1%	69.0%	93.7%	100%	72.7%	88.9%	89.5%
No. in Cohorts	110	108	110	232	234	231	87	79	82	333	325	314

	PHIL			WMST			Humanities Division			Campus		
	4-YR	5-YR	6-YR	4-YR	5-YR	6-YR	4-YR	5-YR	6-YR	4-YR	5-YR	6-YR
Graduation Rates												
In Declared Dept.	55.4%	78.4%	87.5%	60.0%	78.0%	76.3%	64.8%	81.2%	82.8%	57.2%	74.6%	78.2%
In Another Dept.	6.2%	9.8%	6.3%	5.3%	9.9%	9.7%	6.4%	7.9%	8.1%	6.7%	11.1%	11.6%
Total	61.5%	88.2%	93.8%	65.3%	87.9%	86.0%	71.2%	89.1%	90.9%	63.9%	85.6%	89.8%
No. in Cohorts	65	51	48	95	91	93	922	888	878	4,999	4,787	4,765

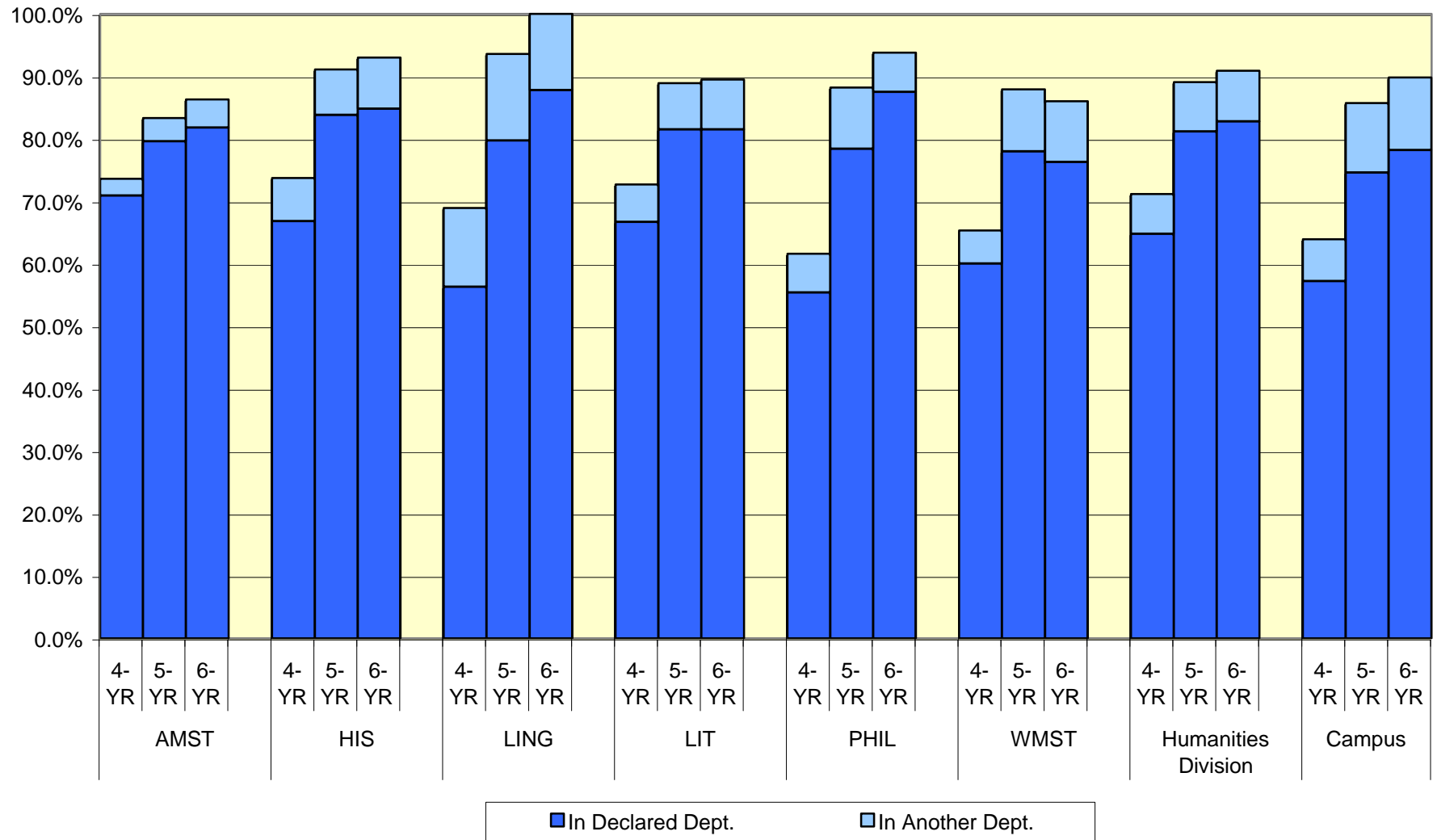
4-year graduation rates are based on the 1995-1999 3rd-year dept. cohorts. 5-year rates are based on the 1994-1998 cohorts, and 6-year rates on the 1993

Average Time-to-Degree by Department

	AMST	HIS	LING	LIT	PHIL	WMST	Division	Campus
Enrolled Quarters	12.2	12.1	11.6	12.2	11.9	12.5	12.1	12.4
Elapsed Quarters	12.7	12.8	12.7	12.7	12.9	12.9	12.8	12.9
No. of Graduates	174	284	99	409	62	78	1,106	5,193

Average Enrolled and Elapsed Quarters are based on 1996/1997 - 2000/2001 graduates who first enrolled at UCSC as new freshmen.

**Graduation Rates of Continuing 3rd-Year Undergraduates by Department
Humanities Division**



Graduation Rates and TTD by Department

Natural Sciences Division

Graduation Rates for Continuing Third-Year Undergraduates by Department

	BIOC			BIOL			CHEM			EART		
	4-YR	5-YR	6-YR	4-YR	5-YR	6-YR	4-YR	5-YR	6-YR	4-YR	5-YR	6-YR
Graduation Rates												
In Declared Dept.	20.6%	27.7%	31.7%	50.9%	74.0%	79.6%	41.3%	55.4%	60.0%	65.6%	80.7%	75.9%
In Another Dept.	16.5%	35.1%	49.5%	4.7%	9.8%	9.6%	6.5%	26.8%	25.0%	3.3%	5.3%	6.9%
Total	37.1%	62.8%	81.2%	55.5%	83.8%	89.2%	47.8%	82.1%	85.0%	68.9%	86.0%	82.8%
No. in Cohorts	97	94	101	578	635	701	46	56	60	61	57	58

	MATH			PHYS			Natural Sciences Division			Campus		
	4-YR	5-YR	6-YR	4-YR	5-YR	6-YR	4-YR	5-YR	6-YR	4-YR	5-YR	6-YR
Graduation Rates												
In Declared Dept.	52.9%	72.3%	75.7%	19.2%	37.2%	48.1%	46.5%	66.9%	71.8%	57.2%	74.6%	78.2%
In Another Dept.	5.7%	9.2%	14.9%	11.5%	30.2%	32.7%	6.4%	13.9%	15.7%	6.7%	11.1%	11.6%
Total	58.6%	81.5%	90.5%	30.8%	67.4%	80.8%	52.9%	80.9%	87.5%	63.9%	85.6%	89.8%
No. in Cohorts	70	65	74	52	43	52	904	950	1,046	4,999	4,787	4,765

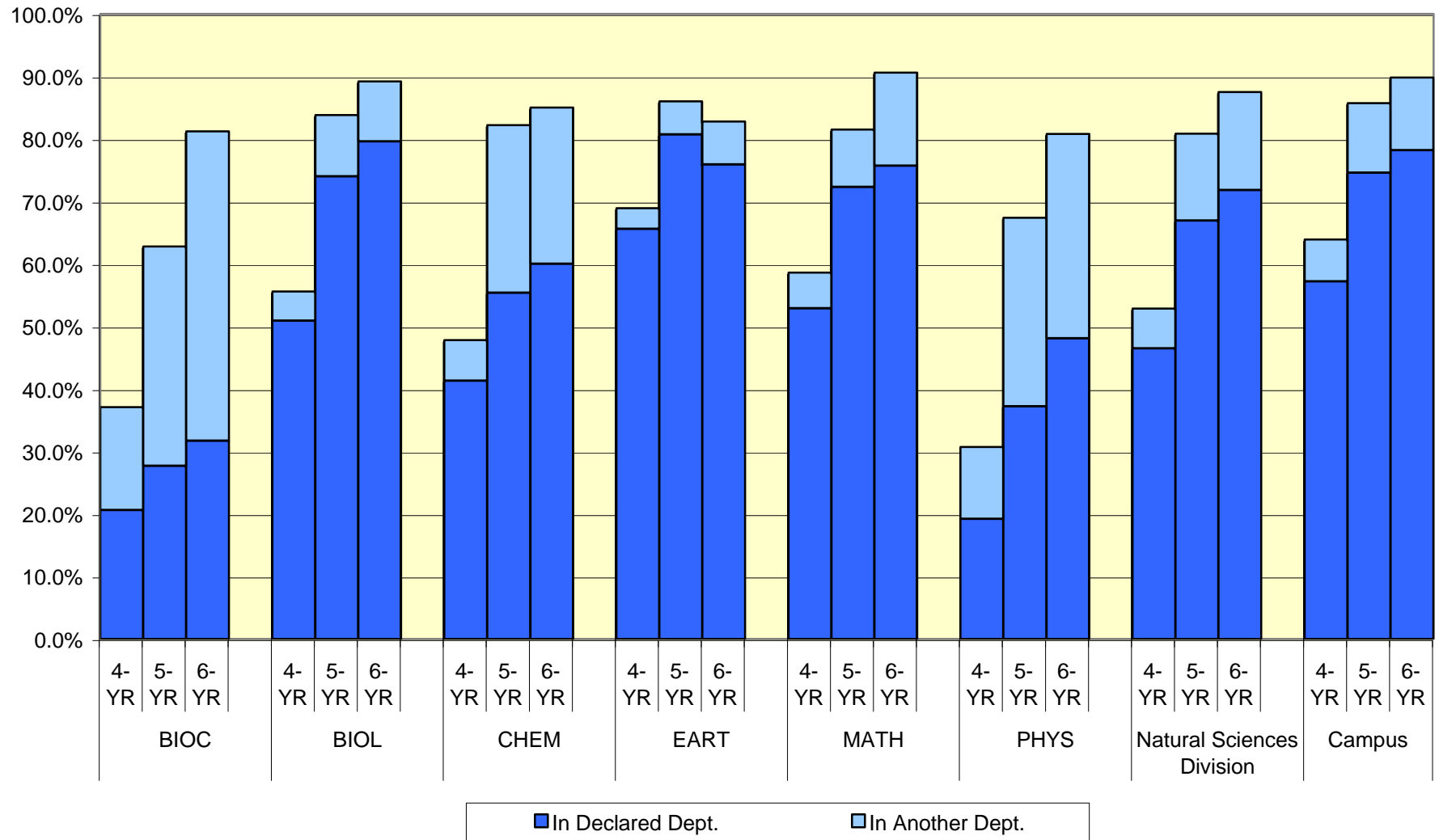
4-year graduation rates are based on the 1995-1999 3rd-year dept. cohorts. 5-year rates are based on the 1994-1998 cohorts, and 6-year rates on the 1993

Average Time-to-Degree by Department

	BIOC	BIOL	CHEM	EART	MATH	PHYS	Division	Campus
Enrolled Quarters	13.5	13.0	13.7	12.6	13.1	13.3	13.4	12.4
Elapsed Quarters	13.5	13.1	13.8	13.4	13.4	14.0	13.6	12.9
No. of Graduates	68	601	54	69	76	26	868	5,193

Average Enrolled and Elapsed Quarters are based on 1996/1997 - 2000/2001 graduates who first enrolled at UCSC as new freshmen.

**Graduation Rates of Continuing 3rd-Year Undergraduates by Department
Natural Sciences Division**



Graduation Rates and TTD by Department

Social Sciences Division

Graduation Rates for Continuing Third-Year Undergraduates by Department

	ANTH			CMMU			ECON			ENVS		
	4-YR	5-YR	6-YR	4-YR	5-YR	6-YR	4-YR	5-YR	6-YR	4-YR	5-YR	6-YR
Graduation Rates												
In Declared Dept.	66.5%	81.5%	81.8%	65.9%	82.8%	84.4%	68.4%	85.1%	88.3%	53.1%	77.3%	83.9%
In Another Dept.	6.8%	14.0%	13.6%	4.7%	6.5%	6.7%	2.6%	2.7%	3.9%	5.1%	8.6%	7.7%
Total	73.3%	95.5%	95.5%	70.6%	89.2%	91.1%	71.0%	87.8%	92.2%	58.2%	85.9%	91.6%
No. in Cohorts	176	178	176	85	93	90	269	222	206	352	326	311

	LALS			LGST			POLI			PSYC		
	4-YR	5-YR*	6-YR*	4-YR	5-YR	6-YR	4-YR	5-YR	6-YR	4-YR	5-YR	6-YR
Graduation Rates												
In Declared Dept.	34.8%	69.2%	65.9%	74.1%	73.3%	70.0%	74.6%	82.5%	87.3%	62.7%	76.6%	82.4%
In Another Dept.	11.6%	17.3%	21.9%	9.3%	13.3%	20.0%	6.0%	7.4%	6.9%	6.8%	9.9%	8.7%
Total	46.4%	86.5%	87.8%	83.3%	86.7%	90.0%	80.6%	89.9%	94.1%	69.5%	86.5%	91.1%
No. in Cohorts	69	52	41	54	30	20	201	189	204	839	806	778

	SOCY			Social Sciences Division			Campus		
	4-YR	5-YR	6-YR	4-YR	5-YR	6-YR	4-YR	5-YR	6-YR
Graduation Rates									
In Declared Dept.	61.8%	80.5%	80.5%	62.7%	83.2%	83.1%	57.2%	74.6%	78.2%
In Another Dept.	3.8%	5.3%	8.8%	5.9%	4.5%	8.6%	6.7%	11.1%	11.6%
Total	65.6%	85.8%	89.3%	68.6%	87.7%	91.7%	63.9%	85.6%	89.8%
No. in Cohorts	157	190	215	2,202	2,086	2,041	4,999	4,787	4,765

4-year graduation rates are based on the 1995-1999 3rd-year dept. cohorts. 5-year rates are based on the 1994-1998 cohorts, and 6-year rates on the 1993

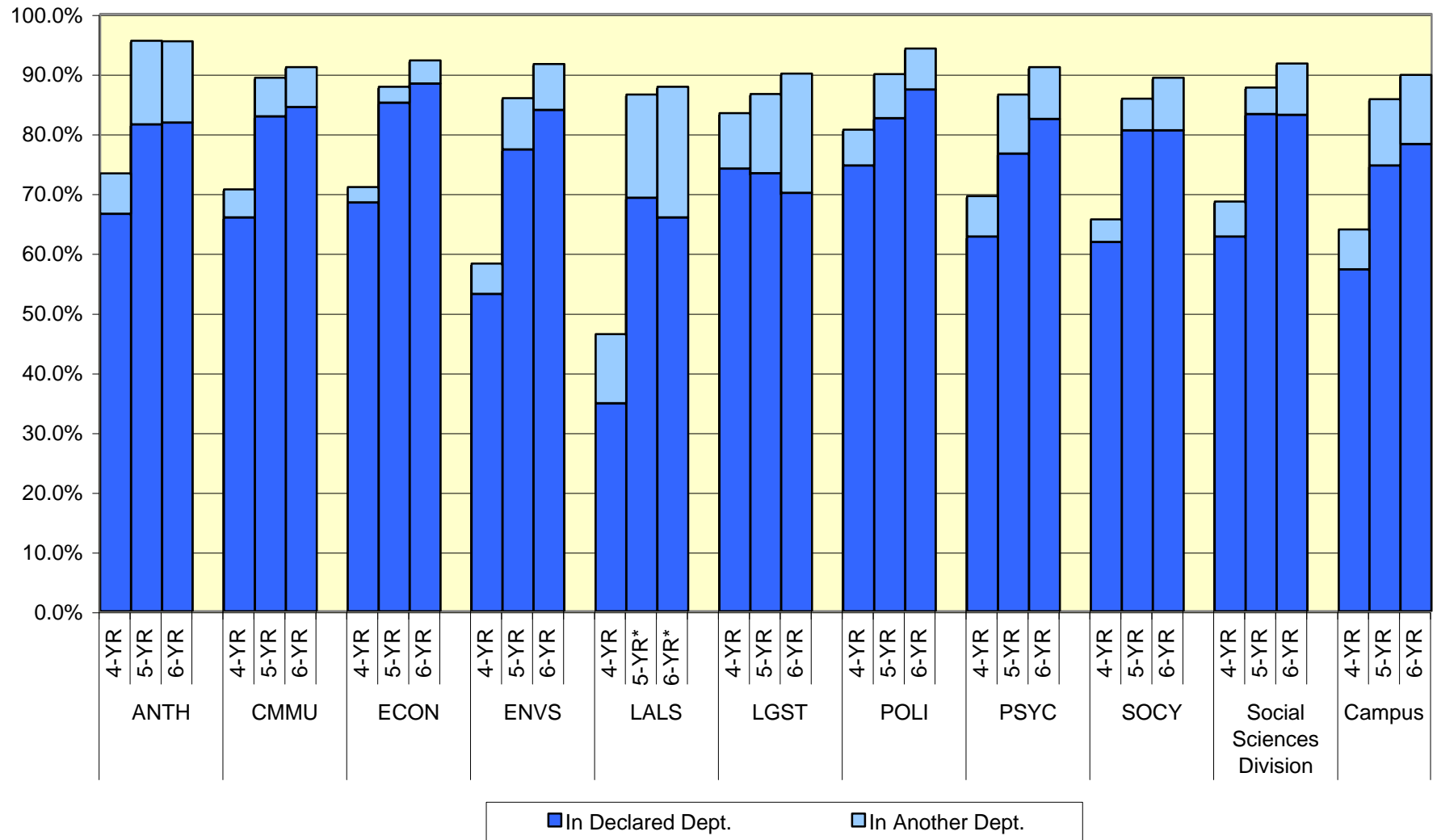
*Latin American Studies and Latin American and Latino Studies majors were combined. The 5- and 6-year graduation rates are based on only four (1995-1998) and three (1995-1997) cohorts respectively).

Average Time-to-Degree by Department

	ANTH	CMMU	ECON	ENVS	LALS	LGST	POLI	PSYC	SOCY	Division	Campus
Enrolled Quarters	12.0	12.7	12.5	12.2	12.3	12.2	12.0	12.2	12.2	12.2	12.4
Elapsed Quarters	12.9	12.8	12.7	12.8	13.4	12.3	12.6	12.5	13.0	12.7	12.9
No. of Graduates	255	174	427	243	72	54	198	664	196	2,283	5,193

Average Enrolled and Elapsed Quarters are based on 1996/1997 - 2000/2001 graduates who first enrolled at UCSC as new freshmen.

**Graduation Rates of Continuing 3rd-Year Undergraduates by Department
Social Sciences Division**



Graduation Rates and TTD by Department

Individual Majors

Graduation Rates for Continuing Third-Year Undergraduates by Department

Graduation Rates	Individual Studies			Campus		
	4-YR	5-YR	6-YR	4-YR	5-YR	6-YR
In Declared Dept.	53.8%	84.0%	84.0%	57.2%	74.6%	78.2%
In Another Dept.	0.0%	0.0%	4.0%	6.7%	11.1%	11.6%
Total	53.8%	84.0%	88.0%	63.9%	85.6%	89.8%
No. in Cohorts	26	25	25	4,999	4,787	4,765

4-year graduation rates are based on the 1995-1999 3rd-year dept. cohorts. 5-year rates are based on the 1994-1998 cohorts, and 6-year rates on the 1993

Average Time-to-Degree by Department

	IND	Campus
Enrolled Quarters	12.2	12.4
Elapsed Quarters	13.8	12.9
No. of Graduates	48	5,193

Average Enrolled and Elapsed Quarters are based on 1996/1997 - 2000/2001 graduates who first enrolled at UCSC as new freshmen.

Graduation Rates of Continuing 3rd-Year Undergraduates Individual Studies

