

UC SANTA CRUZ

Retention and Graduation Update

2007-2008



Prepared August 2008

This report was prepared by Institutional Research staff in the Office of Planning and Budget. Please address inquiries to: Institutional Research and Policy Studies, Office of Planning and Budget, UC Santa Cruz, CA 95064 (831) 459-4341.

Table of Contents

RETENTION RATES, GRADUATION RATES, AND TIME TO DEGREE FOR NEW FROSH..... 4

Frosh Retention, Graduation, & Time To Degree 5

 Frosh Retention And Graduation Rates 6

 Six-Year Graduation Rates For 2000 Frosh Cohort 6

 UCSC, National Rates (NCAA Division I Schools), & UC Average 6

Frosh Retention, Graduation, & Time To Degree By Gender 7

 Women 7

 Men 7

 Frosh Retention And Graduation Rates By Gender – 2001 Cohort 8

 Historical Gender Differences In Retention & Graduation Rates 8

Frosh Retention, Graduation, And Time To Degree By Ethnicity 9

 All Traditionally Underrepresented Ethnic Groups 9

 Traditionally Underrepresented Vs. All New Frosh 10

 One-Year Retention Rates 10

 Six-Year Graduation Rates 10

Frosh Retention, Graduation, And Time To Degree By Ethnicity 11

 African American Students 11

 Native American Students 12

 Mexican American/Chicano Students 12

 Other Latino Students 13

 Filipino Students 13

 Asian Students 14

 White Students 14

 Five-Year Averages 15

Frosh Retention, Graduation, And Time To Degree By Admissions Status 16

 Students Admitted By Exception 16

 Regularly Admitted Students 16

 Regular Admission vs. Admission By Exception 17

 One-Year Retention Rates 17

 Six-Year Graduation Rates 17

Frosh Retention, Graduation, And Time To Degree By Residency 18

 California Residents 18

 Out-Of-State Students 18

 International Students 19

 Five-Year Averages 19

Frosh Retention, Graduation, And Time To Degree By College (At Entry) 20

 Cowell College 20

 Crown College 20

 College Eight 21

Kresge College.....	21
Merrill College.....	22
College Nine	22
Oakes College	23
Porter College	23
Stevenson College.....	24
College Ten.....	24
Five-Year Averages	25
Frosh Retention And Graduation Rates By Total Sat I Scores.....	26
RETENTION RATES, GRADUATION RATES, AND TIME TO DEGREE FOR JUNIOR TRANSFERS.....	27
Retention, Graduation, And Time To Degree For Junior Transfers.....	28
Junior Transfers	28
Native Third Year Juniors.....	28
Two And Four-Year Graduation Rates.....	29
Junior Transfer Retention, Graduation, & Time To Degree By Gender	30
Women	30
Men	30
Junior Transfer Retention, Graduation, And Time To Degree By Ethnicity.....	31
All Traditionally Underrepresented Ethnic Groups.....	31
Traditionally Underrepresented vs. All New Junior Transfers.....	31
Two- And Four-Year Graduation Rates	31
Ethnic Groups - Five-Year Averages.....	32
Junior Transfer Retention And Graduation Rates By Residency.....	32
Residency - Five-Year Averages	32
Junior Transfer Retention, Graduation, And Time To Degree By College (At Entry)	33
Cowell College	33
Crown College	33
College Eight	34
Kresge College.....	34
Merrill College.....	35
College Nine	35
Oakes College	36
Porter College	36
Stevenson College.....	37
College Ten.....	37
Five-Year Averages	38

Retention Rates, Graduation Rates, and Time to Degree for New Frosh

Frosh Retention, Graduation, & Time to Degree

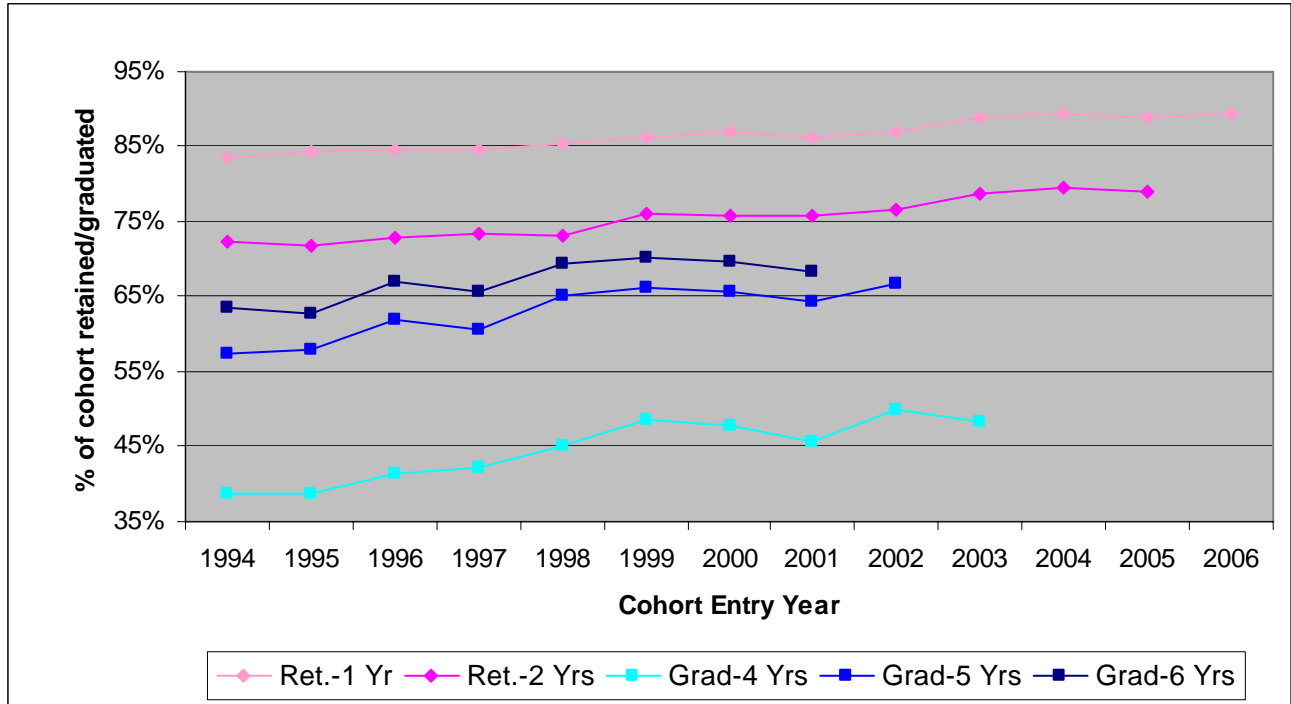
Entry Year	Cohort Size	Percentage Retained		Percentage Graduating			Average Time to Degree	
		1-Year	2-Years	4-Years	5-Years	6-Years	Quarters Enrolled ¹	Quarters Elapsed ²
1994	1,751	83.5%	72.4%	38.8%	57.3%	63.6%	12.1	13.2
1995	1,792	84.3%	71.7%	38.6%	58.0%	62.7%	12.1	13.1
1996	1,970	84.7%	72.9%	41.4%	61.9%	66.9%	12.1	13.0
1997	2,082	84.7%	73.3%	42.2%	60.7%	65.6%	12.3	13.0
1998	2,309	85.3%	73.2%	45.1%	65.0%	69.4%	12.5	12.9
1999	2,350	86.1%	76.1%	48.6%	66.3%	70.1%	12.6	12.7
2000	2,869	87.0%	75.9%	47.7%	65.6%	69.6%	12.7	12.8
2001	2,939	86.1%	75.7%	45.7%	64.4%	68.3%	12.7	12.8
2002	3,168	86.9%	76.7%	49.9%	66.6%			
2003	3,353	88.9%	78.8%	48.4%				
2004	2,947	89.4%	79.6%					
2005	2,977	89.0%	79.0%					
2006	3,335	89.5%						

¹ Average number of quarters in which all students graduating within 6 years enrolled, including enrolled summer terms.

² Average elapsed quarters between first and graduating terms (inclusive) for all students graduating within 6 years. Summer terms are counted only for students whose degrees were granted in summer.

Retention and graduation rates for new frosh have been gradually but steadily improving over the past decade.

Frosh Retention and Graduation Rates



Higher retention in the first two years is associated with higher eventual graduation rates.

Across gender and ethnicity, UCSC students graduate at higher rates than a national comparison of all Division I institutions, but lower than the UC average.

Six-year Graduation Rates for 2000 Frosh Cohort UCSC, National Rates (NCAA Division I Schools), & UC Average

	UCSC	Division I Institutions ¹	UC Average ²
Men	66%	59%	76%
Women	72%	64%	82%
Native American	74%	48%	74%
Asian	67%	70%	80%
Black/African Am.	54%	46%	68%
Hispanic	68%	54%	75%
White	72%	64%	80%
All Students	70%	62%	80%

¹ NCAA data available at http://web1.ncaa.org/app_data/instAggr2007/1_0.pdf

² UC Average for UCB, UCD, UCI, UCLA, UCR, UCSD, UCSB, UCSC from the Integrated Postsecondary Education Data System (IPEDS).

Frosh Retention, Graduation, & Time to Degree by Gender**WOMEN**

Entry Year	Cohort Size	Percentage Retained		Percentage Graduating			Average Time to Degree	
		1-Year	2-Year	4-Years	5-Years	6-Years	Quarters Enrolled ¹	Quarters Elapsed ²
1994	1,136	83.3 %	72.6%	43.4 %	60.7 %	66.3 %	12.0	13.0
1995	1,136	84.1 %	71.5%	41.5 %	59.9 %	64.3 %	12.0	13.0
1996	1,169	84.5 %	72.3%	46.1 %	64.2 %	68.4 %	11.9	12.8
1997	1,228	84.5 %	73.0%	47.3 %	64.4 %	68.0 %	12.1	12.8
1998	1,361	84.7 %	73.5%	49.7 %	66.2 %	70.0 %	12.3	12.7
1999	1,364	87.5 %	77.6%	54.0 %	69.6 %	72.9 %	12.5	12.5
2000	1,643	86.7 %	75.7%	53.2 %	68.1 %	71.5%	12.6	12.6
2001	1,626	86.2%	74.8%	50.8%	66.8%	70.0%	12.6	12.6
2002	1,831	86.1%	77.0%	54.7%	69.0%			
2003	1,843	88.0%	77.3%	51.2%				
2004	1,627	89.4%	79.3%					
2005	1643	89.2%	80.3%					
2006	1816	89.0%						

MEN

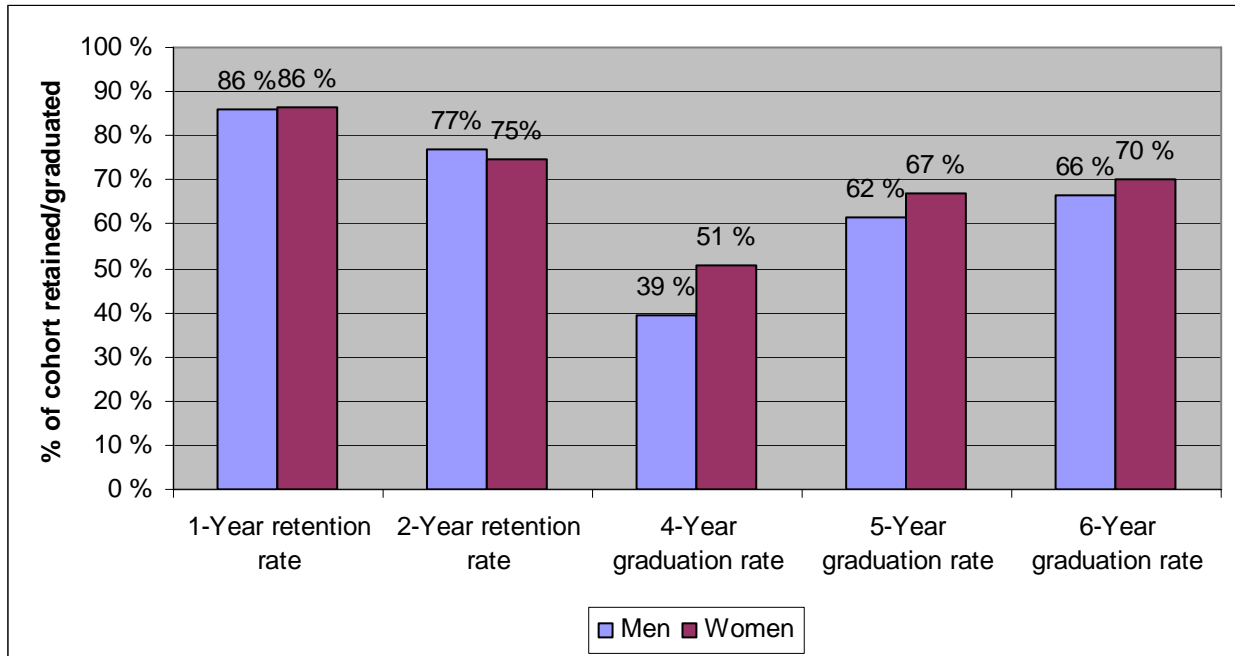
Entry Year	Cohort Size	Percentage Retained		Percentage Graduating			Average Time to Degree	
		1-Year	2-Year	4-Years	5-Years	6-Years	Quarters Enrolled ¹	Quarters Elapsed ²
1994	615	83.9 %	72.0%	30.4 %	51.1 %	58.5 %	12.3	13.5
1995	656	84.8 %	72.1%	33.5 %	54.6 %	59.9 %	12.3	13.3
1996	801	85.0 %	73.9%	34.5 %	58.6 %	64.7 %	12.4	13.4
1997	854	84.9 %	73.8%	34.9 %	55.3 %	62.1 %	12.6	13.4
1998	948	86.1 %	72.8%	38.5 %	63.4 %	68.6 %	12.7	13.2
1999	986	84.3 %	74.0%	41.2 %	61.7 %	66.1 %	12.9	13.0
2000	1,226	87.5 %	76.3%	40.4 %	62.2 %	67.1 %	12.9	13.1
2001	1,313	86.0 %	76.9%	39.5 %	61.5 %	66.3 %	12.8	13.0
2002	1,337	87.9 %	76.4%	43.3 %	63.3%			
2003	1,510	90.1 %	80.7%	45.0%				
2004	1,320	89.5 %	79.9%					
2005	1,333	88.8 %	77.6%					
2006	1,518	90.1 %						

¹ Average number of quarters in which all students graduating within 6 years enrolled, including enrolled summer terms.

² Average elapsed quarters between first and graduating terms (inclusive) for all students graduating within 6 years. Summer terms are counted only for students whose degrees were granted in summer.

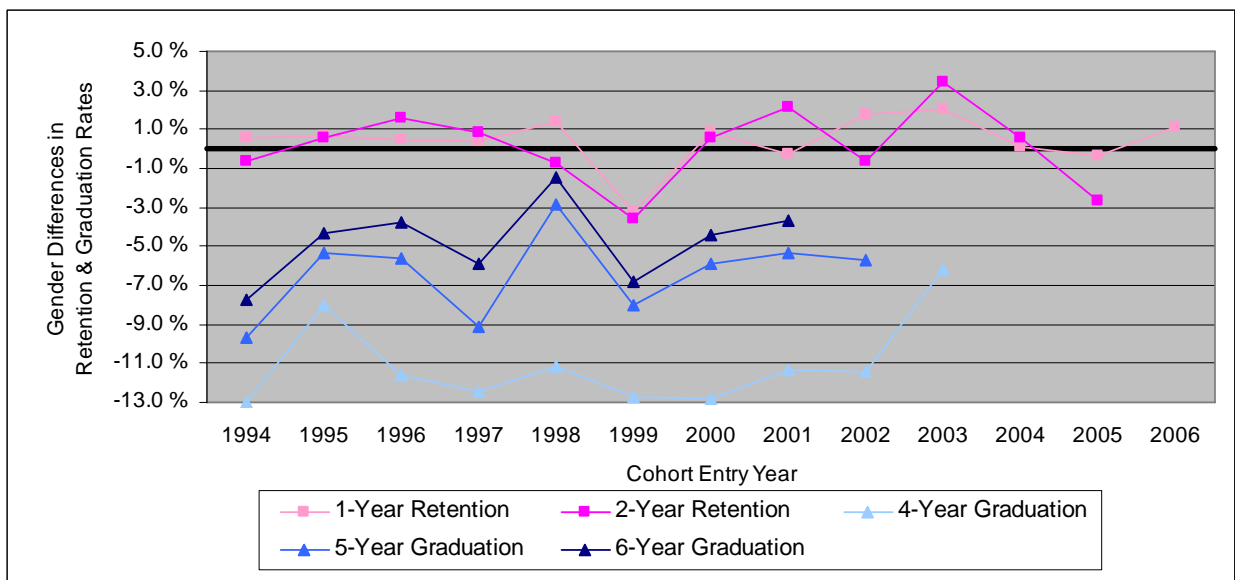
Frosh Retention and Graduation Rates by Gender

2001 Cohort



At the lower division, men and women are retained at similar rates, but women tend to graduate at higher rates.

Historical Gender Differences in Retention & Graduation Rates (Calculated as women's rates minus men's rates)



Frosh Retention, Graduation, and Time to Degree by Ethnicity**ALL TRADITIONALLY UNDERREPRESENTED ETHNIC GROUPS¹**

Entry Year	Cohort Size	Percentage Retained		Percentage Graduating			Average Time to Degree	
		1-Year	2-Years	4-Years	5-Years	6-Years	Quarters Enrolled ²	Quarters Elapsed ³
1994	417	84.9 %	73.1%	25.7%	49.6%	58.8%	12.7	13.8
1995	464	84.1 %	73.7%	32.8%	52.6%	57.1%	12.4	13.2
1996	382	86.9 %	73.6%	34.0%	53.9%	60.5%	12.5	13.3
1997	386	85.5 %	73.1%	37.8%	55.4%	62.2%	12.5	13.2
1998	471	86.0 %	76.0%	42.9%	63.7%	67.9%	12.8	13.1
1999	457	85.6 %	76.4%	40.7%	62.8%	68.3%	12.9	13.0
2000	566	86.6 %	76.5%	41.9%	60.1%	65.4%	13.0	13.1
2001	635	87.9 %	77.5%	42.2%	62.4%	66.8%	13.0	13.0
2002	702	87.5 %	75.8%	41.9%	61.1%			
2003	779	89.0 %	79.1%	41.8%				
2004	639	89.5 %	79.8%					
2005	668	88.6%	79.9%					
2006	831	88.1%						

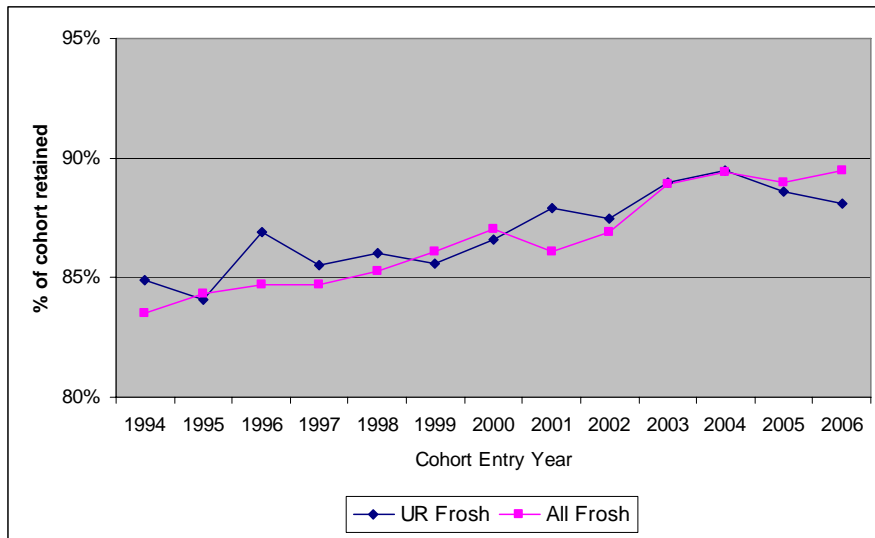
¹ African-American, Native American, Mexican American/Chicano, Other Latino, and Filipino students.

² Average number of quarters in which all students graduating within 6 years enrolled, including enrolled summer terms.

³ Average elapsed quarters between first and graduating terms (inclusive) for all students graduating within 6 years. Summer terms are counted only for students whose degrees were granted in summer.

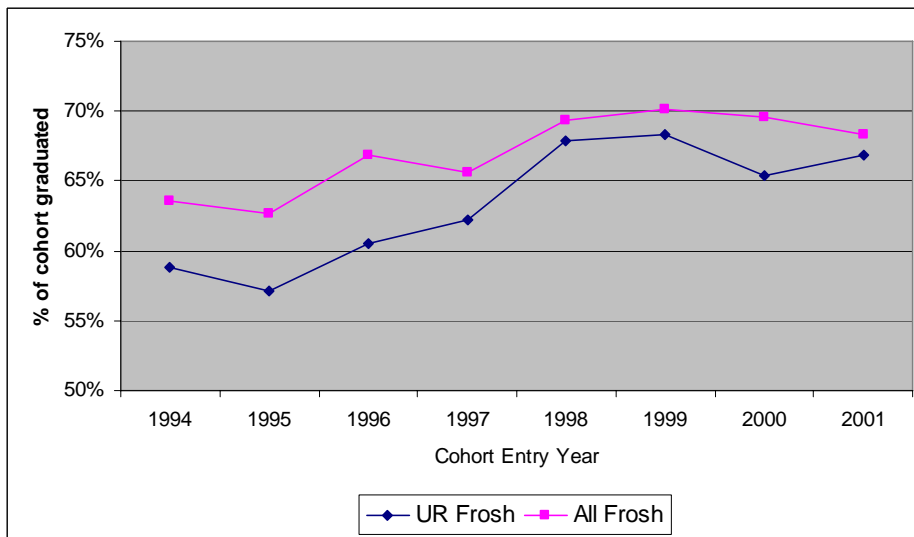
Traditionally Underrepresented vs. All New Frosh

One-Year Retention Rates



Retention rates for underrepresented frosh are similar to the overall average. Graduation rates have historically been lower, but in the most recent year, the gap has narrowed.

Six-Year Graduation Rates



Frosh Retention, Graduation, and Time to Degree by Ethnicity

Retention and graduation rates based on a small number of students (less than 100) are more sensitive to random fluctuations than those based on larger numbers, and may vary dramatically from year to year. Because the rates for some students-of-color are based on relatively small numbers, year-to-year variations should be interpreted with caution. Five-year averages, which are more stable indicators are presented at the end of this section.

AFRICAN AMERICAN STUDENTS

Entry Year	Cohort Size	Percentage Retained		Percentage Graduating			Average Time to Degree	
		1-Year	2-Year	4-Years	5-Years	6-Years	Quarters Enrolled ¹	Quarters Elapsed ²
1994	41	75.6 %	75.6 %	17.1 %	34.1 %	53.7 %	13.2	14.8
1995	68	91.2 %	70.6 %	29.4 %	45.6 %	50.0 %	12.6	13.3
1996	47	87.2 %	61.7 %	29.8 %	42.6 %	46.8 %	12.2	13.2
1997	43	88.4 %	72.1 %	32.6 %	51.2 %	58.1 %	12.4	13.4
1998	55	90.9 %	89.1 %	58.2 %	76.4 %	80.0 %	12.3	12.6
1999	52	88.5 %	78.8 %	48.1 %	63.5 %	69.2 %	12.6	12.8
2000	69	82.6 %	72.5 %	33.3 %	50.7 %	53.6 %	12.8	12.9
2001	78	91.0 %	79.5 %	47.4 %	61.5 %	65.4 %	12.8	12.7
2002	80	88.8 %	80.0 %	43.8 %	61.3 %			
2003	94	89.4 %	76.6 %	43.6 %				
2004	82	92.7 %	82.9 %					
2005	68	94.1 %	80.9 %					
2006	84	85.7 %						

¹ Average number of quarters in which all students graduating within 6 years enrolled, including enrolled summer terms.

² Average elapsed quarters between first and graduating terms (inclusive) for all students graduating within 6 years. Summer terms are counted only for students whose degrees were granted in summer.

Frosh Retention, Graduation, and Time to Degree by Ethnicity**NATIVE AMERICAN STUDENTS**

Entry Year	Cohort Size	Percentage Retained		Percentage Graduating			Average Time to Degree	
		1-Year	2-Year	4-Years	5-Years	6-Years	Quarters Enrolled ¹	Quarters Elapsed ²
1994	19	73.7 %	47.4 %	10.5 %	31.6 %	42.1 %	13.1	14.0
1995	30	83.3 %	70.0 %	43.3 %	60.0 %	60.0 %	12.4	12.8
1996	20	85.0 %	60.0 %	25.0 %	55.0 %	65.0 %	12.5	14.1
1997	20	70.0 %	55.0 %	35.0 %	45.0 %	45.0 %	11.7	12.3
1998	22	86.4 %	72.7 %	50.0 %	77.3 %	86.4 %	12.6	13.3
1999	20	70.0%	50.0%	35.0%	50.0%	50.0%	12.2	12.6
2000	23	91.3%	78.3%	47.8%	73.9%	73.9%	12.9	12.9
2001	24	87.5%	75.0%	54.2%	75.0%	79.2%	12.8	12.9
2002	28	78.6%	57.1%	35.7%	50.0%			
2003	29	93.1%	79.3%	41.4%				
2004	25	92.0%	80.0%					
2005	26	84.6%	80.8%					
2006	26	88.5%						

MEXICAN AMERICAN/CHICANO STUDENTS

Entry Year	Cohort Size	Percentage Retained		Percentage Graduating			Average Time to Degree	
		1-Year	2-Years	4-Years	5-Years	6-Years	Quarters Enrolled ¹	Quarters Elapsed ²
1994	208	83.7 %	74.5 %	26.9 %	49.0 %	57.7 %	12.8	13.8
1995	203	84.7 %	74.9 %	29.6 %	51.2 %	55.7 %	12.4	13.3
1996	178	87.1 %	77.0 %	36.5 %	56.2 %	61.2 %	12.6	13.0
1997	171	87.1 %	73.7 %	35.7 %	55.0 %	63.7 %	12.8	13.4
1998	214	85.0 %	74.8 %	38.3 %	56.5 %	62.1 %	12.9	13.2
1999	214	85.5 %	75.7 %	32.7%	56.1%	61.7%	13.1	13.2
2000	276	88.4 %	79.7 %	41.3%	61.6%	69.6%	13.1	13.3
2001	292	88.7 %	77.4 %	40.8%	61.6%	65.8%	12.9	13.0
2002	309	86.7 %	77.7 %	38.8%	59.9%			
2003	359	90.3 %	81.9 %	42.3%				
2004	301	86.7 %	77.4%					
2005	308	88.6 %	80.8%					
2006	400	88.8 %						

¹ Average number of quarters in which all students graduating within 6 years enrolled, including enrolled summer terms.

² Average elapsed quarters between first and graduating terms (inclusive) for all students graduating within 6 years. Summer terms are counted only for students whose degrees were granted in summer.

Frosh Retention, Graduation, and Time to Degree by Ethnicity**OTHER LATINO STUDENTS**

Entry Year	Cohort Size	Percentage Retained		Percentage Graduating			Average Time to Degree	
		1-Year	2-Year	4-Years	5-Years	6-Years	Quarters Enrolled ¹	Quarters Elapsed ²
1994	93	86.0 %	68.8 %	21.5 %	57.0 %	61.3 %	12.6	13.7
1995	95	80.0 %	71.6 %	37.9 %	55.8 %	62.1 %	12.3	13.3
1996	84	91.7 %	78.6 %	38.1 %	61.9 %	71.4 %	12.5	13.5
1997	68	80.9 %	76.5 %	44.1 %	55.9 %	64.7 %	12.0	13.0
1998	90	85.6 %	73.3 %	41.1 %	63.3 %	67.8 %	13.1	13.2
1999	82	87.8%	76.8%	46.3%	68.3%	73.2%	13.0	13.2
2000	90	84.4%	76.7%	40.0%	60.0%	63.3%	12.6	13.0
2001	110	82.7%	72.7%	34.5%	58.2%	61.8%	13.0	13.2
2002	131	86.3%	70.2%	45.0%	57.3%			
2003	134	87.3%	74.6%	37.3%				
2004	114	89.5%	78.9%					
2005	137	87.6%	78.1%					
2006	178	86.5%						

FILIPINO STUDENTS

Entry Year	Cohort Size	Percentage Retained		Percentage Graduating			Average Time to Degree	
		1-Year	2-Year	4-Years	5-Years	6-Years	Quarters Enrolled ¹	Quarters Elapsed ²
1994	56	98.2 %	82.1 %	39.3 %	57.1 %	67.9 %	12.4	13.6
1995	68	80.9 %	77.9 %	33.8 %	55.9 %	60.3 %	12.3	13.2
1996	53	79.2 %	69.8 %	26.4 %	43.4 %	50.9 %	12.3	13.4
1997	84	88.1 %	73.8 %	40.5 %	60.7 %	63.1 %	12.5	12.9
1998	90	85.6 %	74.4 %	44.4 %	70.0 %	70.0 %	12.7	12.9
1999	89	85.4%	82.0%	51.7%	76.4%	83.1%	12.9	12.9
2000	108	85.2%	70.4%	49.1%	59.3%	62.0%	13.0	12.6
2001	131	88.5%	80.9%	46.6%	65.6%	71.0%	13.1	12.9
2002	154	90.9%	77.9%	45.5%	66.2%			
2003	163	86.5%	77.9%	39.9%				
2004	117	94.0%	84.6%					
2005	129	87.6%	79.1%					
2006	143	89.5%						

¹ Average number of quarters in which all students graduating within 6 years enrolled, including enrolled summer terms.

² Average elapsed quarters between first and graduating terms (inclusive) for all students graduating within 6 years. Summer terms are counted only for students whose degrees were granted in summer.

Frosh Retention, Graduation, and Time to Degree by Ethnicity**ASIAN STUDENTS¹**

Entry Year	Cohort Size	Percentage Retained		Percentage Graduating			Average Time to Degree	
		1-Year	2-Year	4-Years	5-Years	6-Years	Quarters Enrolled ²	Quarters Elapsed ³
1994	205	87.3 %	70.7 %	33.2 %	48.3 %	54.1 %	12.4	13.2
1995	183	83.6 %	74.3 %	38.3 %	56.3 %	62.8 %	12.0	13.1
1996	208	84.6 %	72.1 %	33.2 %	57.7 %	62.0 %	12.4	13.3
1997	253	87.0 %	77.9 %	39.5 %	61.3 %	66.0 %	12.7	13.2
1998	289	86.9 %	74.0 %	40.1 %	66.1 %	72.3 %	12.7	13.2
1999	306	84.0 %	75.8 %	50.3 %	64.4 %	68.6 %	12.6	12.7
2000	414	90.3 %	76.3 %	45.9%	62.1%	68.6%	13.0	13.0
2001	405	89.6 %	77.5 %	43.2%	64.4%	68.1%	13.0	13.0
2002	478	92.5 %	82.6 %	51.7%	72.0%			
2003	482	89.8 %	80.7 %	51.0%				
2004	518	91.9 %	81.9%					
2005	495	91.5 %	76.8%					
2006	608	91.6 %						

WHITE STUDENTS

Entry Year	Cohort Size	Percentage Retained		Percentage Graduating			Average Time to Degree	
		1-Year	2-Year	4-Years	5-Years	6-Years	Quarters Enrolled ²	Quarters Elapsed ³
1994	991	82.7 %	72.4 %	44.9 %	62.3 %	67.7 %	11.9	13.0
1995	1,005	84.7 %	70.7 %	41.4 %	60.6 %	64.8 %	12.0	13.0
1996	1,183	84.5 %	73.2 %	44.3 %	64.9 %	69.4 %	12.0	12.9
1997	1,247	84.8 %	72.7 %	43.9 %	62.2 %	66.7 %	12.2	12.9
1998	1,071	84.5 %	71.7 %	48.5 %	65.6 %	69.8 %	12.3	12.7
1999	1,322	86.9%	76.5%	50.8%	67.8%	71.0%	12.6	12.6
2000	1,539	86.9%	76.2%	49.9%	68.5%	71.9%	12.6	12.7
2001	1,544	85.0%	74.9%	47.0%	64.8%	68.3%	12.5	12.7
2002	1,652	85.1%	76.2%	52.8%	68.1%			
2003	1,726	88.8%	78.4%	51.0%				
2004	1,503	88.9%	78.9%					
2005	1,585	88.8%	79.4%					
2006	1,662	89.6%						

¹ Japanese/Japanese-American, Chinese/Chinese-American, Korean/Korean-American, Vietnamese, East Indian/Pakistani, Pacific Islander, or Other Asian from the University application. Excludes Filipino.

² Average number of quarters in which all students graduating within 6 years enrolled, including enrolled summer terms.

³ Average elapsed quarters between first and graduating terms (inclusive) for all students graduating within 6 years. Summer terms are counted only for students whose degrees were granted in summer.

Frosh Retention and Graduation Rates by Ethnicity

Five-Year Averages¹

Five-year average retention and graduation rates for each ethnic group are presented in the table below. Five-year averages are more stable than single year rates thus allowing more meaningful comparisons. It is important to note, however, that five-year averages may disguise recent trends.

	Percentage Retained		Percentage Graduating		
	1-Year	2-Year	4-Years	5-Years	6-Years
African American	90.1 %	80.0 %	43.2 %	62.7 %	65.3 %
Native American	87.4%	74.5 %	42.8%	65.2%	66.9%
Mexican American	88.2%	79.0 %	39.2%	59.1%	64.6%
Other Latino	87.4%	74.9 %	40.6%	61.4%	66.2%
Filipino	89.7%	80.1 %	46.5%	67.5%	69.8%
<i>Underrepresented Students</i>	88.5%	78.4%	41.7%	62.0%	66.1%
Asian	91.5%	79.9 %	48.4 %	65.8 %	68.7 %
White	88.2%	77.6 %	50.3 %	67.0 %	69.6 %
<i>All Students</i>	88.7%	78.0%	48.1%	65.6%	68.6%

¹ Averages are based on the most recent five years of information. Thus, one-year retention rates include students who entered from 2002 to 2006, while two-year rates include 2001 through 2005 cohorts. This can occasionally produce seemingly inconsistent results (i.e., the six-year graduation rate may be lower than the five-year rate) because the averages are based on different groups of students.

Frosh Retention, Graduation, and Time to Degree by Admissions Status

STUDENTS ADMITTED BY EXCEPTION¹

Entry Year	Cohort Size	% of Cohort	Percentage Retained		Percentage Graduating			Average Time to Degree	
			1-Year	2-Years	4-Years	5-Years	6-Years	Quarters Enrolled ²	Quarters Elapsed ³
1994	171	9.8%	80.1 %	67.3 %	21.6 %	40.4 %	48.5 %	12.5	13.9
1995	200	11.2%	85.5 %	71.5 %	25.5 %	45.5 %	50.0 %	12.5	13.5
1996	162	8.2%	85.2 %	66.7 %	24.1 %	43.2 %	53.1 %	12.9	13.8
1997	92	4.4%	83.7 %	66.3 %	27.2%	46.7%	54.3%	13.0	13.7
1998	95	4.1%	80.0 %	69.5 %	37.9%	55.8%	63.2%	12.8	13.4
1999	85	3.6%	82.4 %	70.6 %	35.3%	51.8%	55.3%	12.9	12.9
2000	67	2.3%	91.0 %	80.6 %	46.3%	58.2%	62.7%	12.7	12.9
2001	97	3.3%	84.5 %	68.0 %	33.0%	64.2%	51.5%	13.1	13.1
2002	95	3.0%	91.6 %	80.0 %	43.2%	40.4 %			
2003	72	2.1%	86.1 %	75.0 %	25.0%				
2004	58	2.0%	89.7%	75.9 %					
2005	65	2.2%	84.6%	73.8%					
2006	138	2.2%	83.3%						

REGULARLY ADMITTED STUDENTS

Entry Year	Cohort Size	Percentage Retained		Percentage Graduating			Average Time to Degree	
		1-Year	2-Years	4-Years	5-Years	6-Years	Quarters Enrolled ²	Quarters Elapsed ³
1994	1,580	83.9 %	73.0 %	40.7%	59.1%	65.2%	12.1	13.1
1995	1,592	84.2 %	71.7 %	40.3%	59.5%	64.3%	12.1	13.0
1996	1,808	84.7 %	73.5 %	42.9%	63.6%	68.1%	12.1	13.0
1997	1,990	84.7 %	73.6 %	42.9%	61.3%	66.1%	12.3	13.0
1998	2,214	85.5 %	73.4 %	45.4%	65.4%	69.7%	12.5	12.9
1999	2,265	86.3 %	76.3 %	49.1%	66.8%	70.6%	12.6	12.7
2000	2,802	86.9 %	75.8 %	47.8%	65.8%	69.8%	12.7	12.8
2001	2,842	86.2 %	76.0 %	46.2%	65.0%	68.9%	12.7	12.8
2002	3,073	86.7 %	76.6 %	50.1%	66.6%			
2003	3,281	89.0 %	78.9 %	48.9%				
2004	2,889	89.4 %	79.7 %					
2005	2,912	89.1%	79.2%					
2006	3,197	89.8%						

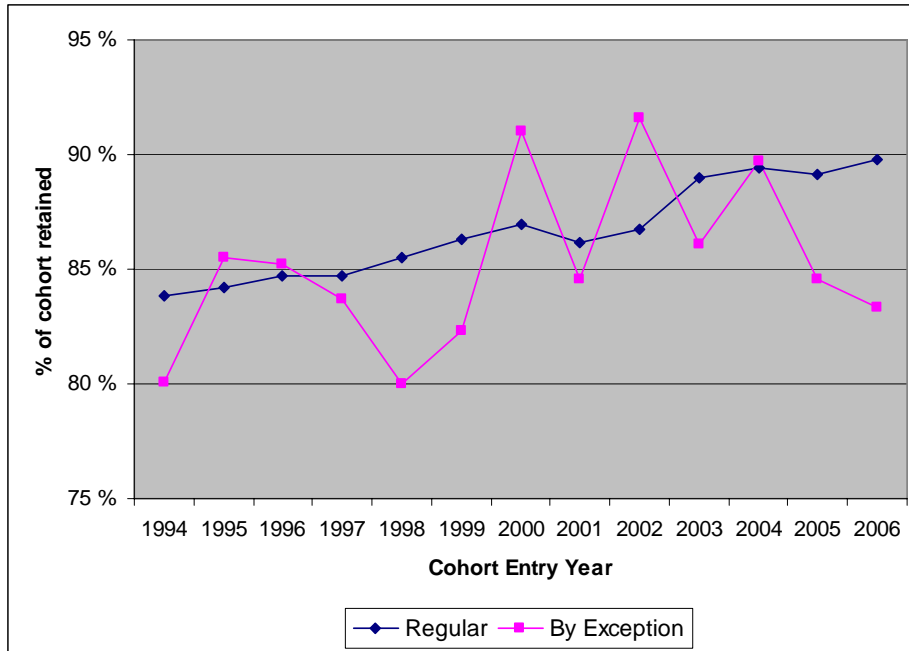
¹ Excludes high school honors and limited status students.

² Average number of quarters in which all students graduating within 6 years enrolled, including enrolled summer terms.

³ Average elapsed quarters between first and graduating terms (inclusive) for all students graduating within 6 years. Summer terms are counted only for students whose degrees were granted in summer.

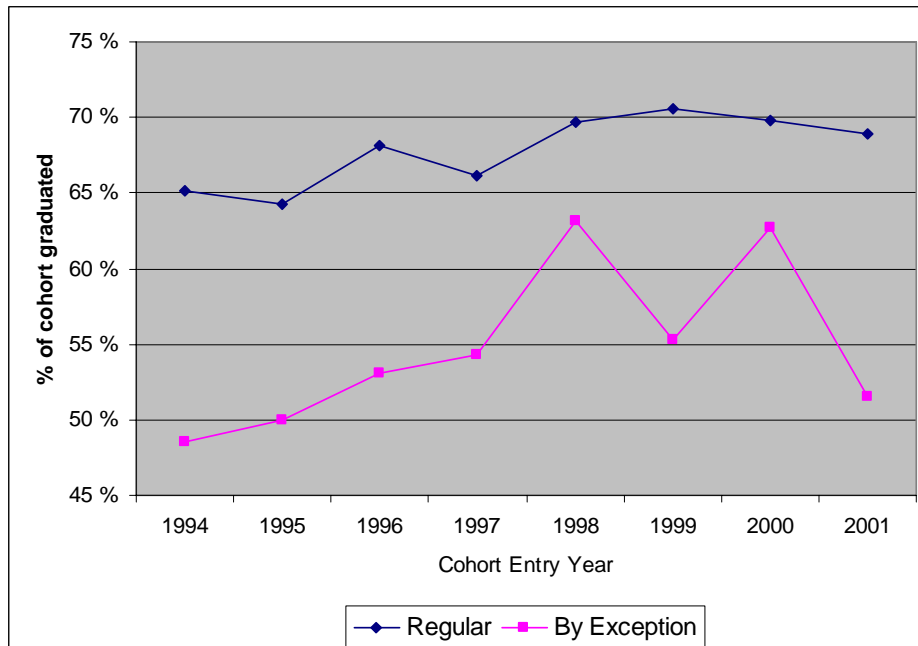
Regular Admission vs. Admission by Exception

One-Year Retention Rates



Retention rates and graduation rates for students admitted by exception are variable year to year due to small sample sizes and variations in admit by exception rates.

Six-Year Graduation Rates



Frosh Retention, Graduation, and Time to Degree by Residency**CALIFORNIA RESIDENTS**

Entry Year	Cohort Size	Percentage Retained		Percentage Graduating			Average Time to Degree	
		1-Year	2-Years	4-Years	5-Years	6-Years	Quarters Enrolled ¹	Quarters Elapsed ²
1994	1,617	83.8 %	73.5 %	38.6 %	57.3 %	63.6 %	12.2	13.2
1995	1,654	84.8 %	72.4 %	38.0 %	58.0 %	62.8 %	12.1	13.1
1996	1,847	85.1 %	74.0 %	41.4 %	62.2 %	67.4 %	12.1	13.0
1997	1,903	85.5 %	74.9 %	42.2 %	61.2 %	66.5 %	12.4	13.0
1998	2,117	86.0 %	74.3 %	45.0 %	65.1 %	69.7 %	12.5	12.9
1999	2,165	86.9 %	77.3 %	48.8 %	67.0 %	70.9 %	12.7	12.8
2000	2,639	87.5 %	76.6 %	47.6 %	65.7 %	69.8 %	12.8	12.8
2001	2,739	86.3 %	76.1 %	45.3 %	64.3 %	68.5 %	12.7	12.8
2002	2,987	87.4 %	77.7 %	49.8 %	67.4 %			
2003	3,193	89.3 %	79.5 %	49.1 %				
2004	2,819	89.5 %	79.7 %					
2005	2,871	89.5 %	79.8 %					
2006	3,194	89.7 %						

OUT-OF-STATE STUDENTS¹

Entry Year	Cohort Size	Percentage Retained		Percentage Graduating			Average Time to Degree	
		1-Year	2-Years	4-Years	5-Years	6-Years	Quarters Enrolled ²	Quarters Elapsed ³
1994	126	80.2 %	73.5 %	42.1 %	57.1 %	62.7 %	11.4	12.9
1995	126	79.4 %	72.4 %	47.6 %	58.7 %	61.9 %	11.4	12.4
1996	118	78.8 %	74.0 %	42.4 %	58.5 %	60.2 %	11.5	12.6
1997	171	76.6 %	74.9 %	42.7 %	55.0 %	55.6 %	11.4	12.5
1998	176	76.7 %	74.3 %	46.6 %	62.5 %	64.8 %	11.9	12.6
1999	175	76.6 %	77.3 %	46.9 %	57.1 %	60.6 %	12.3	12.3
2000	213	79.8 %	76.6 %	49.3 %	65.3 %	68.5 %	12.3	12.6
2001	187	82.4 %	76.1 %	51.9 %	65.8 %	67.4 %	12.2	12.4
2002	169	76.9 %	77.7 %	52.7 %	60.4 %			
2003	153	81.7 %	79.5 %	47.7 %				
2004	113	86.7 %	79.7 %					
2005	97	77.3 %	60.8 %					
2006	134	85.8 %						

¹Students whose permanent home location is within a U.S. commonwealth are counted as out-of-state students.² Average number of quarters in which all students graduating within 6 years enrolled, including enrolled summer terms.³ Average elapsed quarters between first and graduating terms (inclusive) for all students graduating within 6 years. Summer terms are counted only for students whose degrees were granted in summer.

Frosh Retention, Graduation, and Time to Degree by Residency

INTERNATIONAL STUDENTS

Entry Year	Cohort Size	Percentage Retained		Percentage Graduating			Average Time to Degree	
		1-Year	2-Years	4-Years	5-Years	6-Years	Quarters Enrolled ¹	Quarters Elapsed ²
1994	8	75.0 %	62.5 %	37.5 %	62.5 %	62.5 %	11.2	12.8
1995	12	66.7 %	66.7 %	33.3 %	50.0 %	50.0 %	11.8	12.5
1996	5	80.0 %	60.0 %	20.0 %	60.0 %	60.0 %	12.7	13.0
1997	8	50.0 %	62.5 %	37.5 %	50.0 %	50.0 %	10.8	12.3
1998	16	87.5 %	87.5 %	43.8 %	81.3 %	81.3 %	12.6	13.2
1999	10	80.0 %	60.0 %	40.0 %	70.0 %	70.0 %	12.1	12.7
2000	16	100.0 %	62.5 %	43.8 %	50.0 %	50.0 %	12.4	12.1
2001	13	92.3 %	84.6 %	46.2 %	76.9 %	76.9 %	12.6	12.1
2002	12	91.7 %	66.7 %	33.3 %	58.3 %			
2003	6	100.0 %	66.7 %	33.3 %				
2004	14	100.0 %	92.9 %					
2005	6	66.7 %	50.0 %					
2006	5	100.0 %						

¹ Average number of quarters in which all students graduating within 6 years enrolled, including enrolled summer terms.

² Average elapsed quarters between first and graduating terms (inclusive) for all students graduating within 6 years. Summer terms are counted only for students whose degrees were granted in summer.

Five-Year Averages¹

	Percentage Retained		Percentage Graduating		
	1-Year	2-Years	4-Years	5-Years	6-Years
California	89.1 %	78.6 %	48.1 %	65.9 %	69.1 %
Out of State	81.7 %	74.8 %	49.7 %	61.1 %	62.2 %
International	91.7 %	72.2 %	39.3 %	67.3 %	65.6 %
All Students	88.7 %	78.0 %	48.1 %	65.6 %	68.6 %

¹ Averages are based on the most recent five years of information. Thus, one-year retention rates include students who entered from 2002 to 2006, while two-year rates include 2001 through 2005 cohorts. This can occasionally produce seemingly inconsistent results (i.e., the six-year graduation rate may be lower than the five-year rate) because the averages are based on different groups of students.

Out-of-state students have the lowest 1-year retention rates, but the highest 4-year graduation rates, suggesting that out-of-state students who withdraw do so earlier, while those who are retained graduate more quickly.

Frosh Retention, Graduation, and Time to Degree by College (at Entry)**COWELL COLLEGE**

Entry Year	Cohort Size	Percentage Retained		Percentage Graduating			Average Time to Degree	
		1-Year	2-Years	4-Years	5-Years	6-Years	Quarters Enrolled ¹	Quarters Elapsed ²
1994	205	85.4 %	74.1 %	41.0 %	60.5 %	64.4 %	12.1	13.0
1995	218	87.6 %	77.5 %	40.4 %	65.6 %	68.8 %	12.1	13.1
1996	232	87.5 %	76.3 %	44.4 %	66.4 %	70.7 %	11.9	12.9
1997	253	89.3 %	73.9 %	44.7 %	65.2 %	68.0 %	12.3	12.9
1998	271	88.6 %	69.0 %	45.4 %	65.7 %	72.0 %	12.3	13.0
1999	273	86.1 %	75.1 %	53.8 %	71.1 %	72.9 %	12.5	12.5
2000	353	88.4%	80.7%	54.4%	71.7%	75.1%	12.5	12.7
2001	351	86.9%	76.9%	51.0%	68.1%	73.5%	12.5	12.8
2002	333	89.5%	76.3%	50.8%	67.0%			
2003	338	91.7%	81.7%	55.0%				
2004	349	90.5%	80.2%					
2005	307	93.2%	81.8%					
2006	327	87.5%						

CROWN COLLEGE

Entry Year	Cohort Size	Percentage Retained		Percentage Graduating			Average Time to Degree	
		1-Year	2-Years	4-Years	5-Years	6-Years	Quarters Enrolled ¹	Quarters Elapsed ²
1994	251	85.7 %	72.5 %	33.1 %	53.8 %	59.0 %	12.2	13.1
1995	251	87.6 %	75.3 %	40.2 %	61.0 %	67.3 %	12.2	13.2
1996	274	83.9 %	78.8 %	35.0 %	59.9 %	66.4 %	12.4	13.3
1997	293	88.7 %	77.5 %	49.8 %	65.2 %	70.3 %	12.3	12.9
1998	309	81.6 %	72.8 %	41.7 %	62.8 %	66.7 %	12.7	12.9
1999	350	85.1 %	76.9 %	47.4 %	62.3 %	67.4 %	12.7	12.8
2000	392	89.0%	79.3%	50.5%	68.4%	72.4%	12.7	12.7
2001	253	86.2%	75.1%	38.7%	59.7%	64.0%	12.9	13.0
2002	374	87.4%	75.9%	45.5%	66.0%			
2003	352	89.2%	76.7%	37.2%				
2004	300	93.3%	85.3%					
2005	302	86.4%	79.1%					
2006	332	91.0%						

¹ Average number of quarters in which all students graduating within 6 years enrolled, including enrolled summer terms.² Average elapsed quarters between first and graduating terms (inclusive) for all students graduating within 6 years.

Summer terms are counted only for students whose degrees were granted in summer.

Frosh Retention, Graduation, and Time to Degree by College (at Entry)**COLLEGE EIGHT**

Entry Year	Cohort Size	Percentage Retained		Percentage Graduating			Average Time to Degree	
		1-Year	2-Years	4-Years	5-Years	6-Years	Quarters Enrolled ¹	Quarters Elapsed ²
1994	264	83.0 %	76.5 %	34.8%	54.5%	63.3%	12.3	13.4
1995	235	80.4 %	68.9 %	34.9%	55.3%	60.4%	12.2	13.2
1996	265	87.5 %	75.8 %	44.2%	63.0%	68.7%	12.1	12.9
1997	252	85.7 %	77.8 %	42.9%	57.9%	64.3%	12.3	12.9
1998	307	86.0 %	73.9 %	50.2%	69.4%	71.7%	12.4	12.7
1999	315	87.3 %	79.0 %	50.8%	67.6%	70.8%	12.8	12.6
2000	380	89.7 %	77.6 %	42.4%	63.7%	70.8%	13.2	13.2
2001	359	89.4 %	79.7 %	47.4%	67.1%	69.9%	12.8	12.8
2002	327	87.5 %	78.6 %	55.7%	69.4%			
2003	368	89.7 %	77.4 %	48.4%				
2004	308	89.0 %	79.9 %					
2005	316	91.8 %	81.3 %					
2006	335	87.5 %						

KRESGE COLLEGE

Entry Year	Cohort Size	Percentage Retained		Percentage Graduating			Average Time to Degree	
		1-Year	2-Years	4-Years	5-Years	6-Years	Quarters Enrolled ¹	Quarters Elapsed ²
1994	157	79.0%	63.7%	38.2%	53.5%	56.7%	11.7	12.9
1995	174	80.5%	64.9%	41.4%	52.9%	58.6%	12.0	12.8
1996	159	79.9%	66.7%	38.4%	58.5%	62.9%	12.2	13.1
1997	161	75.8%	63.4%	32.3%	51.6%	57.8%	12.1	13.2
1998	195	86.7%	74.9%	44.1%	62.1%	70.3%	12.5	13.0
1999	215	81.9%	67.4%	43.3%	60.9%	65.6%	12.5	12.8
2000	289	83.7%	69.6%	41.5%	62.6%	64.7%	12.9	12.8
2001	214	83.2%	72.0%	43.9%	62.6%	66.8%	12.7	13.0
2002	244	79.1%	70.9%	42.6%	60.2%			
2003	240	89.2%	78.8%	50.8%				
2004	276	83.0%	73.9%					
2005	274	85.4%	79.6%					
2006	298	86.9%						

¹ Average number of quarters in which all students graduating within 6 years enrolled, including enrolled summer terms.² Average elapsed quarters between first and graduating terms (inclusive) for all students graduating within 6 years. Summer terms are counted only for students whose degrees were granted in summer.

Frosh Retention, Graduation, and Time to Degree by College (at Entry)**MERRILL COLLEGE**

Entry Year	Cohort Size	Percentage Retained		Percentage Graduating			Average Time to Degree	
		1-Year	2-Years	4-Years	5-Years	6-Years	Quarters Enrolled ¹	Quarters Elapsed ²
1994	214	80.8 %	70.1 %	33.2 %	56.1 %	61.7 %	12.4	13.3
1995	230	82.6 %	72.2 %	41.7 %	58.7 %	61.3 %	12.0	12.8
1996	283	86.6 %	68.2 %	38.9 %	59.4 %	64.7 %	12.1	13.1
1997	285	80.7 %	71.2 %	36.5 %	55.8 %	61.4 %	12.6	13.2
1998	298	84.2 %	76.2 %	49.3 %	68.1 %	71.5 %	12.5	12.6
1999	310	86.8 %	80.6 %	51.6 %	68.4 %	73.2 %	12.7	12.7
2000	369	86.4 %	75.6 %	45.8 %	62.6 %	68.0 %	12.9	13.0
2001	333	86.5 %	76.9 %	45.3 %	67.6 %	71.8 %	12.9	13.0
2002	323	85.1 %	73.7 %	45.5 %	61.9 %			
2003	341	87.1 %	80.4 %	52.2 %				
2004	247	90.3 %	81.4 %					
2005	290	90.7 %	81.4 %					
2006	338	86.7 %						

COLLEGE NINE

Entry Year	Cohort Size	Percentage Retained		Percentage Graduating			Average Time to Degree	
		1-Year	2-Years	4-Years	5-Years	6-Years	Quarters Enrolled ¹	Quarters Elapsed ²
2000	6	50.0 %	66.7 %	16.7%	50.0%	50.0%	10.3	11.3
2001	348	85.1 %	72.7 %	46.8%	62.1%	64.9%	12.6	12.5
2002	376	85.4 %	74.2 %	49.7%	63.8%			
2003	338	88.8 %	76.0 %	49.4%				
2004	273	87.5 %	76.6 %					
2005	283	90.8 %	77.7 %					
2006	288	91.7 %						

¹ Average number of quarters in which all students graduating within 6 years enrolled, including enrolled summer terms.

² Average elapsed quarters between first and graduating terms (inclusive) for all students graduating within 6 years. Summer terms are counted only for students whose degrees were granted in summer.

Frosh Retention, Graduation, and Time to Degree by College (at Entry)**OAKES COLLEGE**

Entry Year	Cohort Size	Percentage Retained		Percentage Graduating			Average Time to Degree	
		1-Year	2-Years	4-Years	5-Years	6-Years	Quarters Enrolled ¹	Quarters Elapsed ²
1994	191	85.9 %	73.3%	38.7%	51.8%	60.7%	12.2	13.2
1995	212	88.7 %	73.1%	33.0%	52.4%	56.6%	12.2	13.2
1996	214	83.2 %	71.5%	39.7%	58.4%	62.1%	12.2	13.0
1997	232	87.1 %	76.3%	48.7%	66.8%	70.3%	11.9	12.7
1998	287	88.5 %	73.2%	42.9%	64.5%	69.0%	12.6	13.0
1999	252	86.1 %	73.4%	43.7%	64.7%	68.7%	12.6	12.9
2000	319	85.0 %	73.0%	42.6%	59.6%	62.7%	12.8	12.9
2001	330	89.4 %	78.2%	43.6%	62.1%	66.7%	12.8	13.0
2002	294	90.8 %	84.7%	50.7%	73.5%			
2003	299	86.6 %	76.6%	47.8%				
2004	266	93.2 %	80.8%					
2005	261	88.5 %	78.9%					
2006	326	90.8 %						

PORTER COLLEGE

Entry Year	Cohort Size	Percentage Retained		Percentage Graduating			Average Time to Degree	
		1-Year	2-Years	4-Years	5-Years	6-Years	Quarters Enrolled ¹	Quarters Elapsed ²
1994	243	81.5%	72.0%	44.0%	60.9%	68.7%	11.9	13.2
1995	252	82.9%	67.1%	38.5%	55.6%	58.7%	12.0	12.9
1996	289	81.7%	68.2%	41.9%	60.9%	63.7%	11.9	12.8
1997	333	80.8%	68.5%	39.6%	55.9%	60.4%	12.2	13.0
1998	336	82.1%	71.1%	43.2%	62.5%	66.7%	12.3	12.9
1999	347	87.6%	76.7%	47.8%	66.9%	69.5%	12.6	12.7
2000	409	86.1%	73.3%	52.1%	65.0%	69.2%	12.3	12.6
2001	403	83.4%	72.5%	45.2%	64.8%	67.5%	12.5	12.7
2002	330	88.2%	77.6%	55.2%	68.5%			
2003	382	89.5%	77.7%	48.2%				
2004	354	88.4%	81.4%					
2005	345	87.8%	75.4%					
2006	374	90.9%						

¹ Average number of quarters in which all students graduating within 6 years enrolled, including enrolled summer terms.² Average elapsed quarters between first and graduating terms (inclusive) for all students graduating within 6 years. Summer terms are counted only for students whose degrees were granted in summer.

Frosh Retention, Graduation, and Time to Degree by College (at Entry)

STEVENSON COLLEGE

Entry Year	Cohort Size	Percentage Retained		Percentage Graduating			Average Time to Degree	
		1-Year	2-Years	4-Years	5-Years	6-Years	Quarters Enrolled ¹	Quarters Elapsed ²
1994	226	85.8 %	73.9 %	48.2 %	65.9 %	71.7 %	12.0	13.0
1995	220	83.6 %	73.6 %	39.1 %	61.4 %	68.6 %	12.0	13.3
1996	254	85.8 %	76.4 %	48.0 %	68.1 %	74.8 %	12.1	13.0
1997	273	87.2 %	75.5 %	40.7 %	65.2 %	70.7 %	12.6	13.2
1998	306	85.9 %	75.2 %	43.8%	64.7%	68.6%	12.7	13.0
1999	288	86.8 %	76.0 %	48.6%	67.7%	71.9%	12.6	12.8
2000	352	87.5 %	76.7 %	50.9%	70.5%	72.7%	12.7	12.7
2001	339	84.1 %	76.7 %	46.9%	63.7%	67.8%	12.5	12.7
2002	308	88.6 %	80.5 %	53.9%	69.8%			
2003	334	89.5 %	81.7 %	49.4%				
2004	296	90.9 %	79.7 %					
2005	298	87.9 %	78.2 %					
2006	364	91.8 %						

COLLEGE TEN

Entry Year	Cohort Size	Percentage Retained		Percentage Graduating			Average Time to Degree	
		1-Year	2-Years	4-Years	5-Years	6-Years	Quarters Enrolled ¹	Quarters Elapsed ²
2002	245	85.3%	73.5%	47.3%	63.3%			
2003	343	87.8%	81.3%	46.9%				
2004	265	87.9%	76.6%					
2005	286	87.8%	78.0%					
2006	338	90.2%						

¹ Average number of quarters in which all students graduating within 6 years enrolled, including enrolled summer terms.

² Average elapsed quarters between first and graduating terms (inclusive) for all students graduating within 6 years. Summer terms are counted only for students whose degrees were granted in summer.

There are relatively large differences in retention and graduation rates among the colleges. The most recent one-year retention rates by individual colleges ranged from 87% to 92%, while four- and six-year graduation rates ranged from 37% to 55%, and 64% to 74% respectively.

Frosh Retention and Graduation Rates by College

Five-Year Averages¹

Five-year average retention and graduation rates for each of the colleges are presented in the table below. They are more stable than single year rates, thus allowing more meaningful cross-college comparisons. However, five-year averages may also disguise recent trends.

College	Percentage Retained		Percentage Graduating		
	1-Year	2-Years	4-Years	5-Years	6-Years
Cowell	90.5 %	79.4%	53.0 %	68.7%	72.3 %
Crown	89.5 %	78.4%	43.9 %	63.8%	68.2 %
Eight	89.1 %	79.4 %	48.9 %	67.4%	69.5 %
Kresge	84.7 %	75.0%	44.4 %	61.7%	65.0 %
Merrill	88.0 %	78.8 %	48.1 %	65.7%	69.2 %
Nine	88.8 %	75.4 %	na	na	na
Oakes	90.0 %	79.8%	45.7 %	64.9%	67.5 %
Porter	89.0 %	76.9%	49.7 %	65.5%	66.6 %
Stevenson	89.8 %	79.4 %	49.9 %	67.3%	70.3 %
Ten	87.8 %	na	na	na	na
UCSC	88.7%	78.0%	48.1%	65.6%	68.6%

¹ Averages are based on the most recent five years of information. Thus, one-year retention rates include students who entered from 2002 to 2006, while two-year rates include 2001 through 2005 cohorts. This can occasionally produce seemingly inconsistent results (i.e., the six-year graduation rates may be lower than the five-year rate) because the averages are based on different groups of students.

Of the colleges for whom 5-year averages were available, 1-year retention rates ranged from 88%-91% with the exception of Kresge at 85%. Six-year graduation rates were highest at Cowell (72%) and Stevenson (70%), and lowest at Kresge (65%) and Porter (67%).

Frosh Retention and Graduation Rates by Total SAT I Scores

Entry Year	SAT I Mean ¹	SAT I Quintiles	Cohort Size	Percentage Retained		Percentage Graduating		
				1-Year	2-Years	4-Years	5-Years	6-Years
2000	1,142	High quintile	495	88.3%	78.6%	49.9%	68.7%	72.3%
		4 th quintile	582	87.3%	75.4%	49.7%	67.0%	69.8%
		3 rd quintile	573	87.1%	73.6%	47.5%	65.1%	69.6%
		2 nd quintile	579	86.9%	75.3%	47.7%	66.8%	70.6%
		Low quintile	590	86.4%	77.1%	44.9%	61.5%	66.6%
		Total	2,819	87.2%	75.9%	47.9%	65.7%	69.7%
2001	1,149	High quintile	544	84.7%	73.5%	44.1%	64.0%	67.8%
		4 th quintile	543	86.9%	77.0%	50.3%	66.3%	68.9%
		3 rd quintile	590	87.8%	77.1%	49.2%	65.9%	69.5%
		2 nd quintile	606	85.3%	74.8%	44.6%	64.7%	68.6%
		Low quintile	611	85.9%	76.4%	40.9%	62.2%	67.3%
		Total	2,894	86.1%	75.8%	45.7%	64.6%	68.4%
2002	1,135	High quintile	582	87.8%	76.6%	51.0%	66.2%	
		4 th quintile	590	88.8%	77.8%	53.1%	68.5%	
		3 rd quintile	621	83.6%	74.2%	51.7%	66.5%	
		2 nd quintile	631	87.6%	76.4%	51.5%	66.4%	
		Low quintile	691	86.6%	78.7%	43.3%	65.6%	
		Total	3,115	86.9%	76.8%	49.9%	66.6%	
2003	1,140	High quintile	630	89.4%	81.4%	50.0%		
		4 th quintile	608	90.4%	78.5%	48.8%		
		3 rd quintile	683	89.5%	77.5%	49.3%		
		2 nd quintile	718	89.4%	80.5%	50.4%		
		Low quintile	663	87.0%	76.8%	43.7%		
		Total	3,302	89.2%	78.9%	48.5%		
2004	1,153	High quintile	533	91.2%	81.6%			
		4 th quintile	567	88.7%	81.5%			
		3 rd quintile	610	89.2%	77.0%			
		2 nd quintile	605	89.8%	80.7%			
		Low quintile	587	89.3%	78.5%			
		Total	2,902	89.6%	79.8%			
2005	1,159	High quintile	549	90.5%	79.8%			
		4 th quintile	610	87.7%	76.6%			
		3 rd quintile	568	90.5%	80.8%			
		2 nd quintile	629	89.3%	78.5%			
		Low quintile	580	87.9%	80.2%			
		Total	2,936	89.1%	79.1%			

¹ Means are based on frosh retention cohorts that exclude high school honors and limited status students.

Retention Rates, Graduation Rates, and Time to Degree for Junior Transfers

Retention, Graduation, and Time to Degree for Junior Transfers
JUNIOR TRANSFERS¹

Entry Year	Cohort Size	Percentage Graduating			Average Time to Degree	
		2-Years	3-Years	4-Years	Quarters Enrolled ³	Quarters Elapsed ⁴
1994	622	47.6%	70.6%	75.2%	6.4	7.0
1995	635	50.2%	72.1%	79.2%	6.5	7.1
1996	650	48.0%	68.6%	76.3%	6.3	7.1
1997	652	49.4%	71.6%	76.7%	6.3	6.9
1998	656	50.0%	73.2%	80.0%	6.5	7.1
1999	676	48.4%	73.7%	80.5%	6.7	7.2
2000	724	49.3%	73.9%	78.5%	7.0	7.0
2001	837	51.6%	74.8%	80.9%	6.9	7.0
2002	804	50.1%	73.8%	80.7%	7.0	7.1
2003	821	50.2%	75.4%	80.9%	6.7	7.0
2004	865	53.6%	75.8%			
2005	856	51.2%				
2006	770					

Graduation rates for junior transfers have gradually increased or remained steady, but lag slightly behind the rates for native third year juniors.

NATIVE THIRD YEAR JUNIORS²

Third Year	Cohort Size	Percentage Graduating			Average Time to Degree	
		2-Years	3-Years	4-Years	Quarters Enrolled ³	Quarters Elapsed ⁴
1994	847	67.8%	88.4%	90.8%	6.1	6.6
1995	827	65.9%	88.3%	92.3%	6.1	6.7
1996	769	66.3%	86.7%	90.9%	6.1	6.7
1997	796	65.6%	88.2%	92.2%	6.1	6.7
1998	937	68.3%	88.3%	91.7%	6.1	6.6
1999	996	66.5%	85.7%	90.3%	6.2	6.7
2000	1,113	70.4%	90.6%	94.5%	6.4	6.6
2001	1,203	73.0%	91.7%	94.5%	6.3	6.4
2002	1,558	70.4%	89.9%	92.9%	6.4	6.6
2003	1,487	70.3%	90.2%	93.3%	6.3	6.6
2004	1,728	71.3%	89.4%			
2005	1,865	68.2%				
2006	1,759					

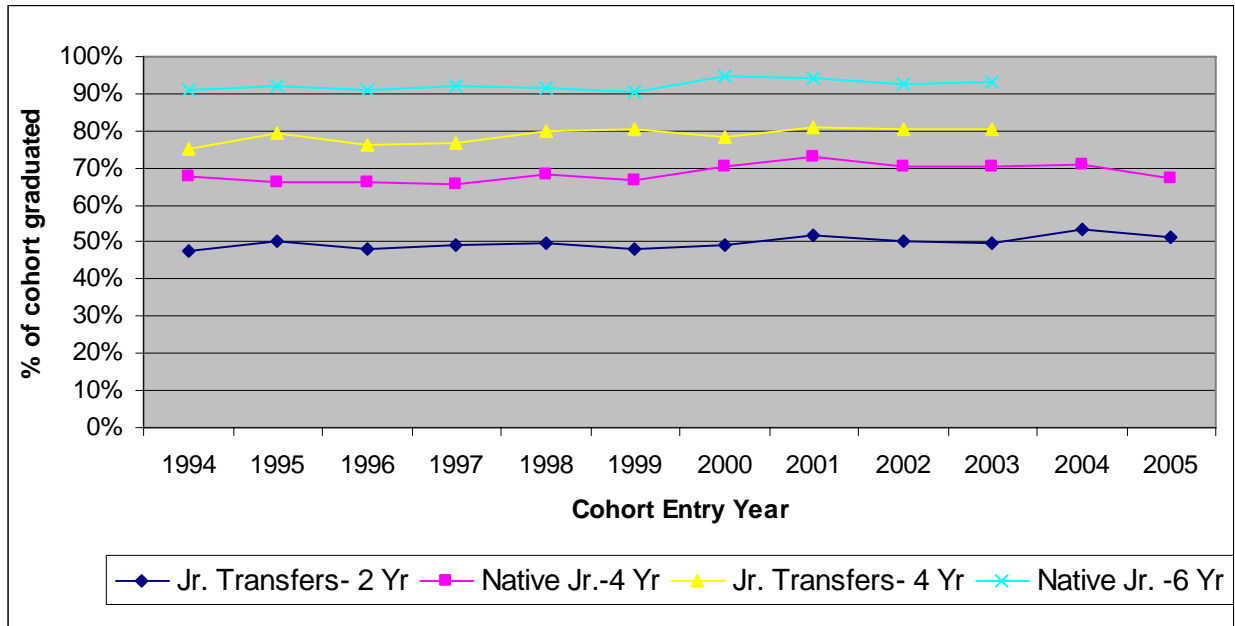
¹ Students transferring from another institution who have completed the equivalent of 90 quarter units.

² Students entering as new frosh who were retained to, and earned 90 units by, Fall of their third year (baseline year used in calculations).

³ Average number of quarters in which all students graduating within 6 years enrolled, including enrolled summer terms.

⁴ Average elapsed quarters between first and graduating terms (inclusive) for all students graduating within 6 years. Summer terms are counted only for students whose degrees were granted in summer.

Two and Four-Year Graduation Rates



Junior Transfer Retention, Graduation, & Time to Degree by Gender

WOMEN

Entry Year	Cohort Size	Percentage Graduating			Average Time to Degree	
		2-Years	3-Years	4-Years	Quarters Enrolled ¹	Quarters Elapsed ²
1994	336	49.7%	71.7%	75.6%	6.3	6.9
1995	338	52.4%	73.7%	80.2%	6.3	7.0
1996	379	53.8%	71.5%	78.4%	6.2	6.9
1997	360	55.6%	73.9%	78.1%	6.2	6.7
1998	369	55.6%	76.4%	82.7%	6.3	6.9
1999	361	54.6%	76.7%	83.1%	6.6	7.0
2000	418	54.1%	78.5%	81.6%	6.9	6.9
2001	482	56.0%	76.1%	82.2%	6.8	6.9
2002	418	52.9%	75.8%	82.3%	6.9	6.9
2003	442	52.5%	76.2%	81.7%	6.6	6.9
2004	418	56.2%	80.4%			
2005	411	57.2%				
2006	375					

Similar to the pattern among frosh entrants, transfer women graduate at higher rates than men.

MEN

Entry Year	Cohort Size	Percentage Graduating			Average Time to Degree	
		2-Years	3-Years	4-Years	Quarters Enrolled ¹	Quarters Elapsed ²
1994	286	45.1%	69.2%	74.8%	6.4	7.1
1995	297	47.8%	70.4%	78.1%	6.6	7.2
1996	271	39.9%	64.6%	73.4%	6.5	7.4
1997	292	41.8%	68.8%	75.0%	6.5	7.2
1998	287	42.9%	69.0%	76.7%	6.6	7.4
1999	315	41.3%	70.2%	77.5%	6.9	7.4
2000	306	42.8%	67.6%	74.2%	7.1	7.2
2001	355	45.6%	73.0%	79.2%	7.0	7.2
2002	386	47.2%	71.5%	79.0%	7.0	7.2
2003	379	47.5%	74.4%	79.9%	6.9	7.1
2004	410	50.5%	74.4%			
2005	428	45.8%				
2006	375					

¹ Average number of quarters in which all students graduating within 6 years enrolled, including enrolled summer terms.

² Average elapsed quarters between first and graduating terms (inclusive) for all students graduating within 6 years. Summer terms are counted only for students whose degrees were granted in summer.

Junior Transfer Retention, Graduation, and Time to Degree by Ethnicity

ALL TRADITIONALLY UNDERREPRESENTED ETHNIC GROUPS¹

Entry Year	Cohort Size	Percentage Graduating			Average Time to Degree	
		2-Years	3-Years	4-Years	Quarters Enrolled ²	Quarters Elapsed ³
1994	104	40.4%	63.5%	70.2%	6.9	7.7
1995	135	40.0%	71.9%	81.5%	7.1	7.6
1996	115	44.3%	75.2%	72.2%	6.4	7.0
1997	118	42.4%	66.1%	72.9%	6.5	7.2
1998	106	45.3%	71.7%	70.2%	6.7	7.1
1999	126	38.1%	63.5%	73.0%	6.9	7.5
2000	137	44.5%	71.5%	75.2%	7.2	7.3
2001	167	44.3%	67.1%	73.1%	7.1	7.2
2002	163	42.3%	66.9%	74.2%	7.3	7.4
2003	189	45.0%	72.0%	78.3%	6.8	7.2
2004	180	47.8%	69.4%			
2005	204	44.6%				
2006	171					

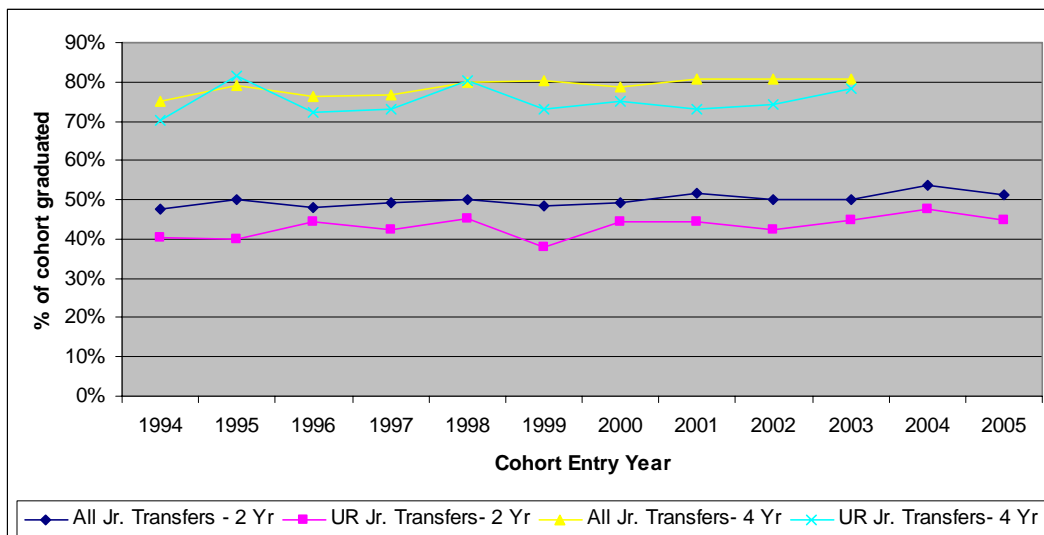
¹ African-American, Native American, Mexican American/Chicano, Other Latino and Filipino students.

² Average number of quarters in which all students graduating within 6 years enrolled, including enrolled summer terms.

³ Average elapsed quarters between first and graduating terms (inclusive) for all students graduating within 6 years. Summer terms are counted only for students whose degrees were granted in summer.

Graduation rates for traditionally underrepresented junior transfers are similar to the overall average.

Traditionally Underrepresented vs. All New Junior Transfers Two- and Four-Year Graduation Rates



Ethnic Groups - Five-Year Averages¹

Five-year average retention and graduation rates by ethnic groups are presented in the table below. Five-year averages are more stable than single year rates allowing more meaningful comparisons; however, they may disguise recent trends.

	Percentage Graduating		
	2-Years	3-Years	4-Years
African American	44.9 %	70.4 %	70.9 %
Native American	45.3 %	56.0 %	65.7%
Mexican American	43.4 %	70.0 %	75.5%
Other Latino	46.3 %	69.2 %	74.2%
Filipino	47.5 %	76.9 %	75.3%
<i>Underrepresented Ethnic Students</i>	44.8%	69.4%	74.8%
Asian	47.5 %	70.3 %	75.8 %
White	54.3 %	76.9 %	82.0 %
<i>All Students</i>	51.2%	74.9%	80.1%

Junior Transfer Retention and Graduation Rates by Residency

Residency - Five-Year Averages¹

	Percentage Graduating		
	2- Years	3- Years	4- Years
California	55.6 %	74.9 %	80.1%
Out of State	68.6 %	86.1 %	89.6 %
International	57.2 %	75.0 %	82.1 %
<i>All Students</i>	50.3 %	75.1%	80.3 %

¹ Averages are based on the most recent five years of information. Thus, two-year graduation rates include students who entered from 2001 to 2005, while three-year rates include 2000 through 2004 cohorts. This can occasionally produce seemingly inconsistent results (i.e., the six-year graduation rates may be lower than the five-year rate) because the averages are based on different groups of students.

Junior Transfer Retention, Graduation, and Time to Degree by College (at Entry)**COWELL COLLEGE**

Entry Year	Cohort Size	Percentage Graduating			Average Time to Degree	
		2-Years	3-Years	4-Years	Quarters Enrolled ¹	Quarters Elapsed ²
1994	58	48.3%	70.7%	77.6%	6.6	7.0
1995	63	46.0%	66.7%	71.4%	6.4	7.0
1996	67	47.8%	71.6%	80.6%	6.2	7.1
1997	62	58.1%	74.2%	80.6%	6.3	6.8
1998	59	52.5%	76.3%	79.7%	6.5	6.8
1999	54	50.0%	66.7%	79.6%	6.6	7.3
2000	45	60.0%	80.0%	84.4%	6.7	6.5
2001	58	48.3%	84.5%	86.2%	6.9	7.0
2002	60	56.7%	76.7%	81.7%	6.6	6.7
2003	50	52.0%	74.0%	84.0%	6.6	7.0
2004	50	52.0%	88.0%			
2005	80	65.0%				
2006	68					

CROWN COLLEGE

Entry Year	Cohort Size	Percentage Graduating			Average Time to Degree	
		2-Years	3-Years	4-Years	Quarters Enrolled ¹	Quarters Elapsed ²
1994	99	35.4%	66.7%	73.7%	6.6	7.4
1995	88	47.7%	75.0%	79.5%	6.4	7.1
1996	93	46.2%	61.3%	72.0%	6.4	7.3
1997	118	43.2%	61.9%	66.1%	6.3	7.0
1998	91	38.5%	70.3%	78.0%	6.5	7.4
1999	140	47.9%	71.4%	79.3%	6.7	7.2
2000	105	50.5%	73.3%	74.3%	6.9	6.8
2001	123	44.7%	65.0%	73.2%	7.2	7.2
2002	113	41.6%	73.5%	81.4%	7.5	7.5
2003	104	30.8%	65.4%	72.1%	7.5	7.7
2004	62	35.5%	71.0%			
2005	80	30.0%				
2006	68					

¹ Average number of quarters in which all students graduating within 6 years enrolled, including enrolled summer terms.

² Average elapsed quarters between first and graduating terms (inclusive) for all students graduating within 6 years. Summer terms are counted only for students whose degrees were granted in summer.

Junior Transfer Retention, Graduation, and Time to Degree by College (at Entry)**COLLEGE EIGHT**

Entry Year	Cohort Size	Percentage Graduating			Average Time to Degree	
		2-Years	3-Years	4-Years	Quarters Enrolled ¹	Quarters Elapsed ²
1994	80	43.8%	67.5%	73.8%	6.4	7.1
1995	112	44.6%	74.1%	79.5%	6.7	7.4
1996	76	47.4%	71.1%	78.9%	6.4	7.2
1997	78	51.3%	78.2%	87.2%	6.5	7.2
1998	90	42.2%	64.4%	71.1%	6.5	7.3
1999	59	49.2%	83.1%	86.4%	6.9	7.1
2000	43	58.1%	76.7%	86.0%	6.9	7.1
2001	88	51.1%	72.7%	80.7%	7.0	7.1
2002	66	53.0%	77.3%	81.8%	6.6	6.8
2003	100	54.0%	77.0%	82.0%	6.5	6.9
2004	115	49.6%	76.5%			
2005	84	44.0%				
2006	66					

KRESGE COLLEGE

Entry Year	Cohort Size	Percentage Graduating			Average Time to Degree	
		2-Years	3-Years	4-Years	Quarters Enrolled ¹	Quarters Elapsed ²
1994	61	45.9%	67.2%	70.5%	6.1	6.9
1995	84	53.6%	72.6%	82.1%	6.4	7.1
1996	102	46.1%	66.7%	74.5%	6.6	7.3
1997	125	52.8%	76.8%	81.6%	6.2	6.9
1998	138	54.3%	79.7%	84.1%	6.4	7.0
1999	179	49.7%	73.7%	78.2%	6.8	7.1
2000	125	46.4%	75.2%	80.0%	7.1	7.1
2001	202	50.5%	78.7%	82.7%	6.9	7.0
2002	123	52.8%	75.6%	79.7%	6.9	6.8
2003	116	52.6%	78.4%	81.9%	6.7	6.8
2004	164	59.8%	83.5%			
2005	116	50.9%				
2006	100					

¹ Average number of quarters in which all students graduating within 6 years enrolled, including enrolled summer terms.

² Average elapsed quarters between first and graduating terms (inclusive) for all students graduating within 6 years. Summer terms are counted only for students whose degrees were granted in summer.

Junior Transfer Retention, Graduation, and Time to Degree by College (at Entry)**MERRILL COLLEGE**

Entry Year	Cohort Size	Percentage Graduating			Average Time to Degree	
		2-Years	3-Years	4-Years	Quarters Enrolled ¹	Quarters Elapsed ²
1994	101	43.6%	72.3%	76.2%	6.5	7.0
1995	105	48.6%	66.7%	77.1%	6.5	7.2
1996	112	42.0%	65.2%	73.2%	6.5	7.1
1997	91	40.7%	67.0%	70.3%	6.4	6.9
1998	92	50.0%	71.7%	78.3%	6.3	6.9
1999	96	50.0%	75.0%	82.3%	6.8	7.2
2000	75	48.0%	72.0%	74.7%	6.9	7.0
2001	93	50.5%	75.3%	80.6%	6.9	6.9
2002	57	49.1%	77.2%	89.5%	7.3	7.3
2003	66	57.6%	81.8%	84.8%	6.6	6.6
2004	44	56.8%	77.3%			
2005	71	45.1%				
2006	103					

COLLEGE NINE

Entry Year	Cohort Size	Percentage Graduating			Average Time to Degree	
		2-Years	3-Years	4-Years	Quarters Enrolled ¹	Quarters Elapsed ²
2000	196	45.9%	74.0%	79.6%	7.2	7.1
2001	50	62.0%	78.0%	84.0%	6.6	6.7
2002	65	58.5%	76.9%	86.2%	6.9	7.0
2003	56	50.0%	69.6%	75.0%	6.5	6.8
2004	59	59.3%	81.4%			
2005	56	51.8%				
2006	39					

¹ Average number of quarters in which all students graduating within 6 years enrolled, including enrolled summer terms.

² Average elapsed quarters between first and graduating terms (inclusive) for all students graduating within 6 years. Summer terms are counted only for students whose degrees were granted in summer.

Junior Transfer Retention, Graduation, and Time to Degree by College (at Entry)**OAKES COLLEGE**

Entry Year	Cohort Size	Percentage Graduating			Average Time to Degree	
		2-Years	3-Years	4-Years	Quarters Enrolled ¹	Quarters Elapsed ²
1994	64	54.7%	73.4%	79.7%	6.4	6.9
1995	53	41.5%	66.0%	79.2%	6.8	7.5
1996	61	59.0%	77.0%	80.3%	5.8	6.7
1997	58	60.3%	79.3%	82.8%	6.1	6.5
1998	42	52.4%	69.0%	78.6%	6.5	7.0
1999	51	27.5%	66.7%	76.5%	6.8	8.1
2000	34	55.9%	76.5%	76.5%	6.7	6.8
2001	80	62.5%	77.5%	85.0%	6.6	6.8
2002	67	55.2%	70.1%	80.6%	6.8	7.1
2003	52	53.8%	71.2%	82.7%	6.7	7.2
2004	56	53.6%	73.2%			
2005	69	46.4%				
2006	100					

PORTER COLLEGE

Entry Year	Cohort Size	Percentage Graduating			Average Time to Degree	
		2-Years	3-Years	4-Years	Quarters Enrolled ¹	Quarters Elapsed ²
1994	86	52.3%	70.9%	72.1%	6.2	6.7
1995	75	58.7%	77.3%	81.3%	6.2	6.7
1996	85	47.1%	65.9%	74.1%	6.2	7.2
1997	75	49.3%	69.3%	74.7%	6.5	7.0
1998	91	51.6%	70.3%	80.2%	6.2	7.1
1999	72	56.9%	80.6%	86.1%	6.5	6.9
2000	53	41.5%	67.9%	77.4%	6.7	7.3
2001	84	48.8%	70.2%	77.4%	6.9	7.2
2002	89	61.8%	78.7%	79.8%	6.5	6.6
2003	67	50.7%	80.6%	85.1%	6.7	7.1
2004	134	58.2%	74.6%			
2005	64	53.1%				
2006	39					

¹ Average number of quarters in which all students graduating within 6 years enrolled, including enrolled summer terms.

² Average elapsed quarters between first and graduating terms (inclusive) for all students graduating within 6 years. Summer terms are counted only for students whose degrees were granted in summer.

Junior Transfer Retention, Graduation, and Time to Degree by College (at Entry)**STEVENSON COLLEGE**

Entry Year	Cohort Size	Percentage Graduating			Average Time to Degree	
		2-Years	3-Years	4-Years	Quarters Enrolled ¹	Quarters Elapsed ²
1994	73	63.0%	76.7%	79.5%	6.1	6.4
1995	55	65.5%	78.2%	83.6%	6.1	6.5
1996	54	57.4%	79.6%	83.3%	6.2	6.8
1997	45	44.4%	71.1%	75.6%	6.5	7.2
1998	53	64.2%	83.0%	92.5%	6.8	7.1
1999	25	48.0%	68.0%	76.0%	6.6	7.0
2000	47	57.4%	72.3%	76.6%	6.5	6.7
2001	58	56.9%	75.9%	82.8%	6.6	7.0
2002	42	40.5%	69.0%	71.4%	6.9	6.9
2003	53	54.7%	79.2%	86.8%	6.7	7.1
2004	44	52.3%	75.0%			
2005	88	54.5%				
2006	69					

COLLEGE TEN

Entry Year	Cohort Size	Percentage Graduating			Average Time to Degree	
		2-Years	3-Years	4-Years	Quarters Enrolled ¹	Quarters Elapsed ²
2002	96	49.0%	72.9%	78.1%	7.0	7.0
2003	106	54.7%	75.5%	77.4%	6.5	6.6
2004	80	51.2%	80.0%			
2005	75	60.0%				
2006	59					

¹ Average number of quarters in which all students graduating within 6 years enrolled, including enrolled summer terms.

² Average elapsed quarters between first and graduating terms (inclusive) for all students graduating within 6 years. Summer terms are counted only for students whose degrees were granted in summer.

**Junior Transfers Retention and Graduation Rates by College (at Entry)
Five-Year Averages¹**

Five-year average retention and graduation rates by ethnic groups and residency status are presented in the table below. Five-year averages are more stable than single year rates allowing more meaningful comparisons; however, they may disguise recent trends.

College	Percentage Graduating		
	2-Years	3-Years	4-Years
Cowell	54.8%	80.6%	83.2%
Crown	36.5%	69.6%	76.1%
Eight	50.3%	76.0%	83.4%
Kresge	53.3%	78.3%	80.5%
Merrill	51.8%	76.7%	82.4%
Nine	56.3%	76.0%	NA
Oakes	54.3%	73.7%	80.3%
Porter	54.5%	74.4%	81.2%
Stevenson	51.8%	74.3%	78.7%
Ten	NA	NA	NA
UCSC	51.2%	74.9%	80.1%

¹ Averages are based on the most recent five years of information. Thus, two-year graduate rates include students who entered from 2001 to 2005. This can occasionally produce seemingly inconsistent results (i.e., the six-year graduation rates may be lower than the five-year rate) because the averages are based on different groups of students.

**Across colleges, 4-year graduation rates ranged
from 76% -83% for junior transfers.**
