

CAMPUSWIDE STRATEGIC INDICATORS 2009 REPORT

	UCSC vs. Comparators*	UCSC Trend	Most Recent Data	Year
UNDERGRADUATE EDUCATION				
SATR 25th and 75th Percentiles		n/a	1020 - 1250	2008
Admit Rate			81%	2008
Yield Rate			19%	2007
1-Year Retention Rate			89%	2007
6-Year Graduation Rate			68%	2007

GRADUATE EDUCATION				
Graduate Enrollments			1,637	2008
Masters Awarded			278	2008
Doctorates Awarded			131	2008
Doctorates per 100 Faculty			23.9	2008
Post Docs			140	2006
Post Docs per 100 Faculty			25.5	2006

FACULTY AWARDS AND NATIONAL ACADEMY MEMBERSHIP				
National Academy Membership			8	2007
Faculty Awards			9	2007
Full-Time Ladder Faculty			483	2007

DIVERSITY				
Undergraduate Students				
<i>Percent Minority**</i>			40%	2007
<i>Percent Underrepresented***</i>			20%	2007
Pell Grant Recipients			25%	2006
Graduate Students				
<i>Percent Minority**</i>			21%	2007
<i>Percent Underrepresented***</i>			11%	2007

	UCSC vs. Comparators*	UCSC Trend	Most Recent Data	Year
DIVERSITY (continued)				
Ladder Faculty				
<i>Percent Minority**</i>			23%	2008
<i>Percent Women</i>			36%	2008
6-Year Graduation Rates by Ethnic Group				
<i>Black</i>			65%	2007
<i>Hispanic</i>			65%	2007
<i>Asian</i>			69%	2007
<i>White</i>			68%	2007
<i>Underrepresented***</i>			66%	2006

TOTAL AND FEDERAL RESEARCH EXPENDITURES				
Full-Time Faculty			534	2005
Total Research			\$114,126	FY2006
Total Research per Faculty			\$214	FY2006
Federal Research			\$66,390	FY2006
Federal Research per Faculty			\$124	FY2006
Percent Federal Dollars			58%	FY2006

PRIVATE SUPPORT				
Endowment			\$117,774	2007
Annual Giving			\$29,120	2007
Alumni Giving Rate			9.2%	2008
Alumni Giving			\$1,073	2008

*For each metric UCSC is shown in blue followed by AAU institutions without medical schools (in alpha order): Brandeis, Cal Tech, Carnegie Mellon, Indiana U - Bloomington, Iowa State, MIT, Pennsylvania State, Princeton, Purdue - Main, Rice, Rutgers New Brunswick, Syracuse, UC Berkeley, UC Santa Barbara, University of Colorado - Boulder, University of Kansas, University of Maryland - College Park, University of Nebraska - Lincoln, University of Oregon, and University of Texas at Austin relative to the mean of the 20 AAU institutions. Data is for the most recent year for which data is available for all comparators.

** Minority counts include African American, American Indian / Alaska Native, Asian and Hispanic ethnic groups.

*** Underrepresented counts include African American, American Indian / Alaska Native, and Hispanic ethnic groups.

UNDERGRADUATE EDUCATION

UCSC & AAU Institutions without a Medical School

SAT Percentiles, Frosh Admit / Yield Rates, Retention, Graduation

	SAT-R % tiles 25th - 75th Fall 2008	Admit Rate Fall 2008 Frosh	Yield Rate Fall 2008 Frosh	1-Yr Retention Rate Fall 2006 Cohort Enrolled Fall 2007	6-Yr Graduation Rate Fall 2001 Cohort Bachelors Fall 2007	Pell Recipients 2006
	25th - 75th	Admit Rate	Yield Rate	1-Yr Retention	6-Yr Graduation	% Pell
UC Santa Cruz	1020 - 1250	81%	19%	89%	68%	25%
Brandeis	1280 - 1460	34%	27%	94%	89%	13%
Cal Tech	1470 - 1560	17%	34%	98%	89%	15%
Carnegie Mellon	1290 - 1500	29%	23%	96%	87%	13%
Indiana U-Bloomington	1040 - 1260	71%	34%	89%	72%	16%
Iowa State	1040 - 1320	89%	44%	85%	66%	22%
MIT	1380 - 1560	12%	66%	98%	93%	15%
Pennsylvania State	1090 - 1300	51%	32%	94%	84%	19%
Princeton	1390 - 1580	10%	59%	97%	95%	9%
Purdue Main	1030 - 1270	72%	33%	85%	69%	17%
Rice	1320 - 1530	23%	35%	97%	90%	10%
Rutgers N Brunswick	1070 - 1300	56%	35%	90%	73%	25%
Syracuse U	1070 - 1270	53%	27%	91%	82%	19%
UC Berkeley	1200 - 1460	23%	41%	97%	88%	33%
UC Santa Barbara	1070 - 1300	54%	19%	91%	80%	25%
U of Colorado Boulder	1070 - 1280	78%	33%	83%	67%	14%
U of Kansas		92%	43%	79%	60%	16%
U of MD College Park	1170 - 1380	39%	36%	93%	80%	16%
U of Nebraska Lincoln	1040 - 1340	63%	69%	83%	63%	21%
U of Oregon	970 - 1210	87%	37%	84%	65%	24%
U of Texas Austin	1100 - 1350	44%	52%	92%	78%	22%

Note: SAT Revised Total includes Critical Reading and Math only. Writing scores were not available for all campuses.

Admit Rate: # of admits / # of applicants

Yield Rate: # of enrolled / # of admits

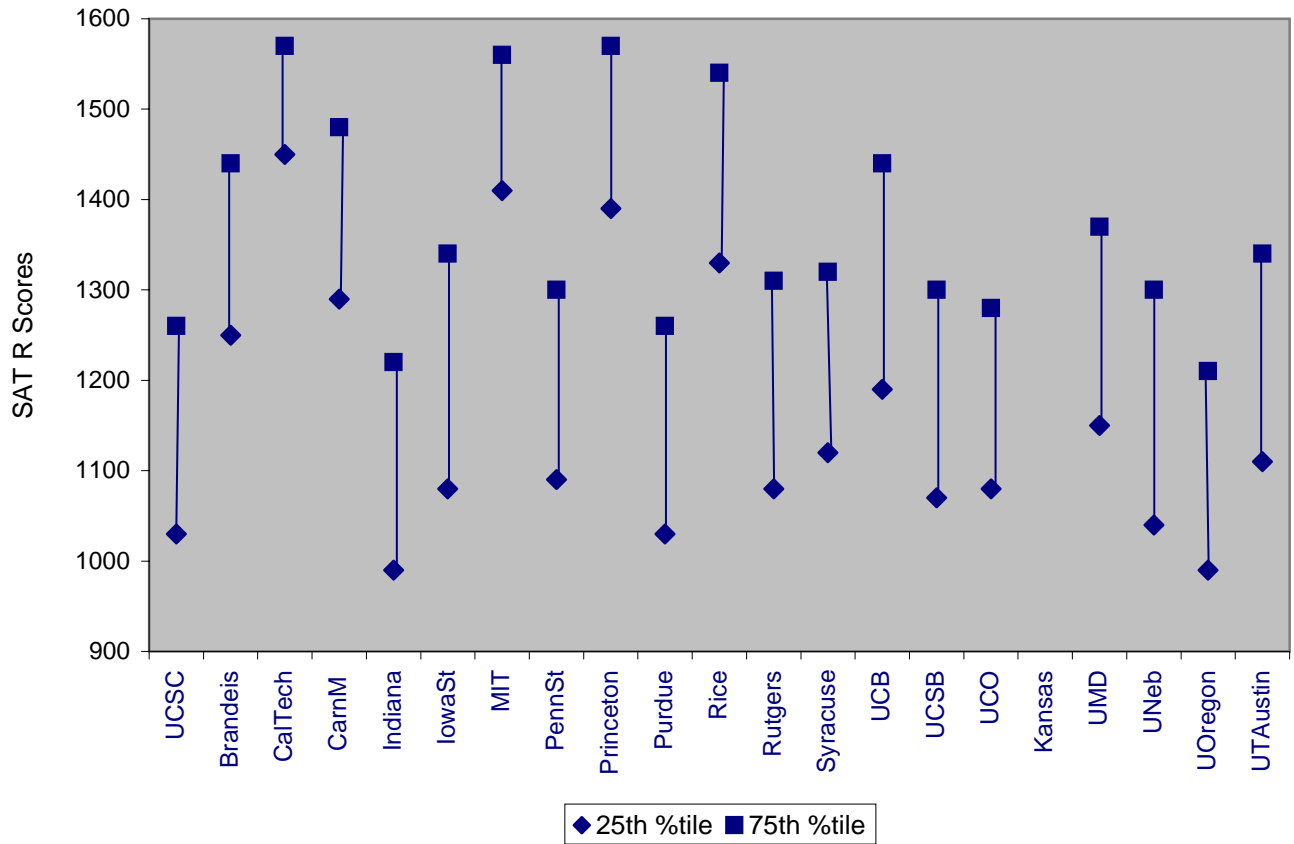
Minority: Black, Hispanic, American Indian / Alaska Native, Asian

Underrepresented: Black, Hispanic, American Indian / Alaska Native

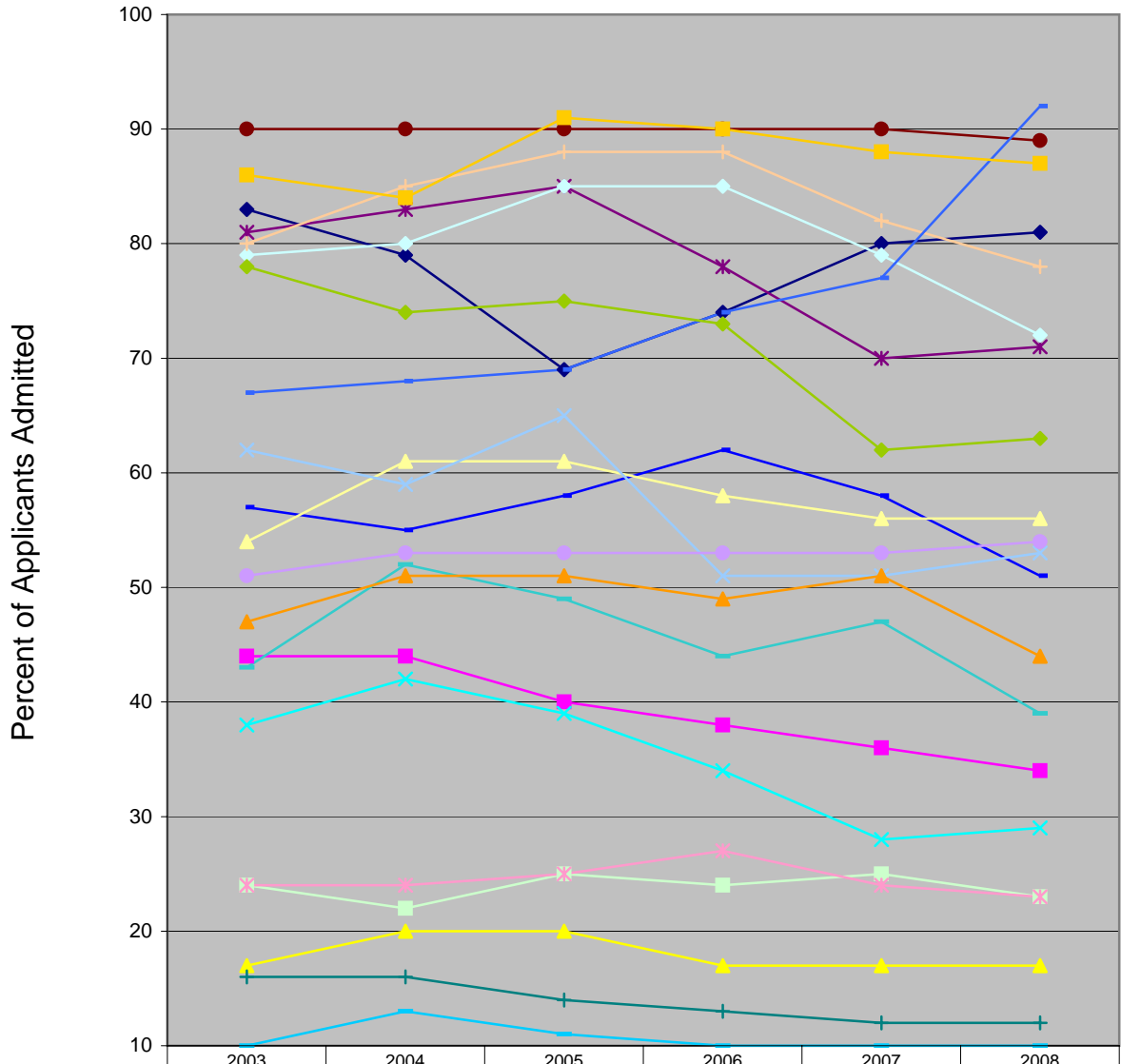
Source: IPEDS for SAT, Admit / Yield Rate, Retention, Graduation

Source: Education Trust for Pell Recipients

**SAT R Scores: 25th and 75th Percentiles
for UCSC and AAU Institutions without a Medical School 2008**

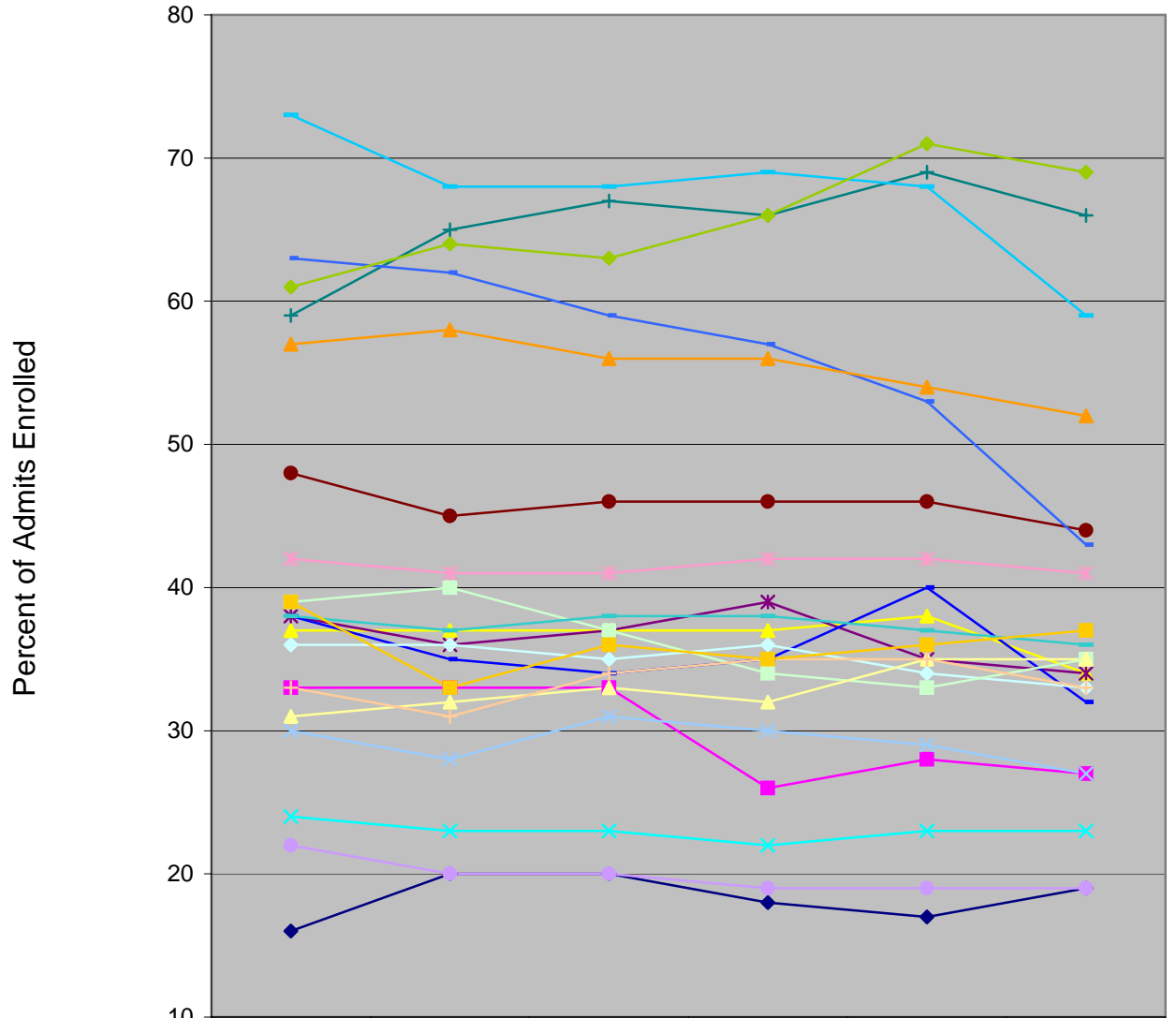


Admit Rates for Frosh at UCSC and AAU Institutions without a Medical School Fall 2003 - Fall 2008



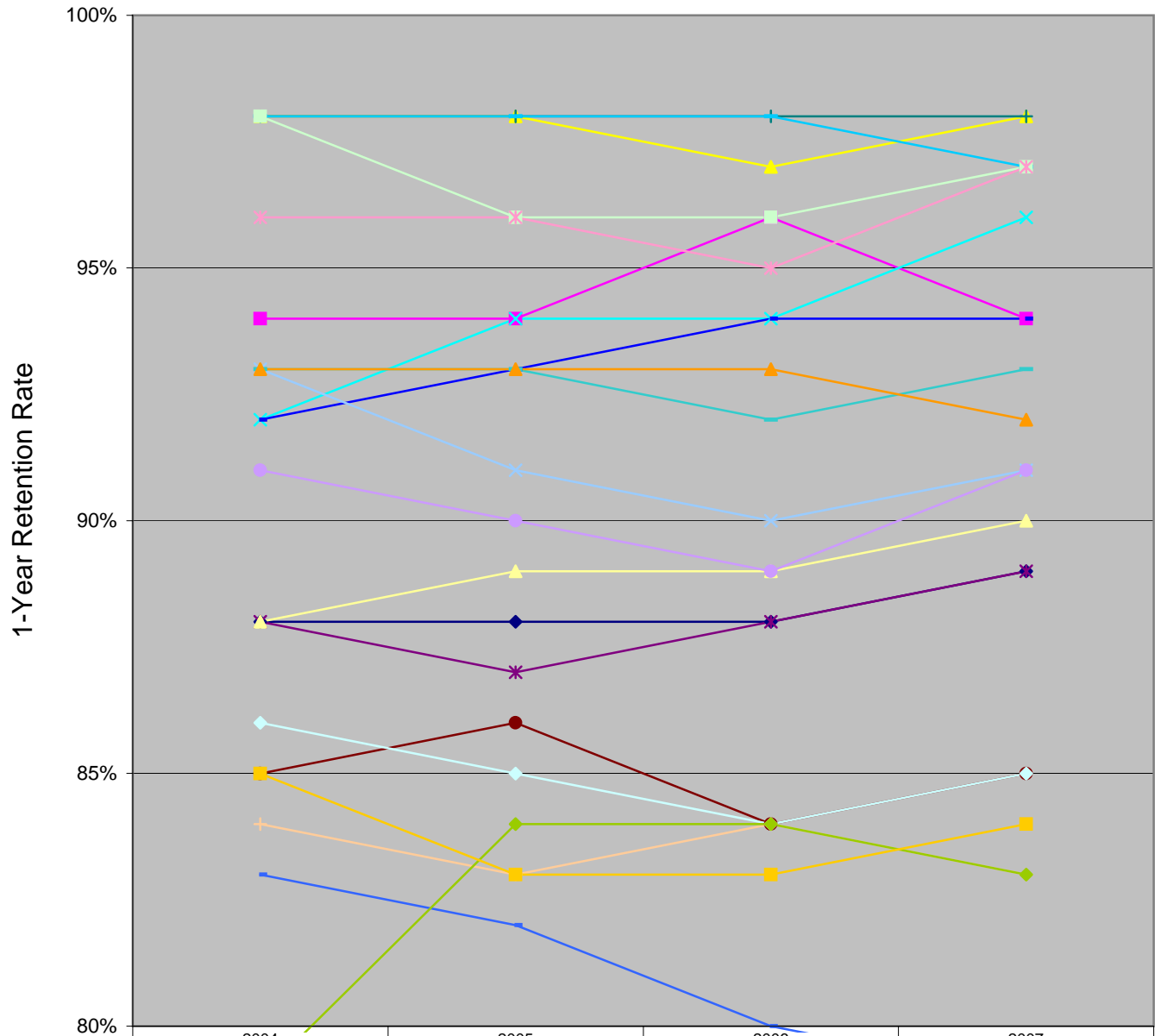
	2003	2004	2005	2006	2007	2008
UC Santa Cruz	67	68	69	74	77	92
Brandeis	44	44	40	38	36	34
Cal Tech	17	20	20	17	17	17
Carnegie Mellon	38	42	39	34	28	29
Indiana U-Bloomington	81	83	85	78	70	71
Iowa State	90	90	90	90	90	89
MIT	16	16	14	13	12	12
Pennsylvania State	57	55	58	62	58	51
Princeton	10	13	11	10	10	10
Purdue Main	79	80	85	85	79	72
Rice	24	22	25	24	25	23
Rutgers N Brunswick	54	61	61	58	56	56
Syracuse U	62	59	65	51	51	53
UC Berkeley	81	83	85	78	70	71
UC Santa Barbara	51	53	53	53	53	54
U of Colorado Boulder	80	85	88	88	82	78
U of Kansas	67	68	69	74	77	92
U of MD College Park	43	52	49	44	47	39
U of Nebraska Lincoln	78	74	75	73	62	63
U of Oregon	86	84	91	90	88	87
U of Texas Austin	47	51	51	49	51	44

Yield Rates for Frosh at UCSC and AAU Institutions without a Medical School Fall 2003 - Fall 2008



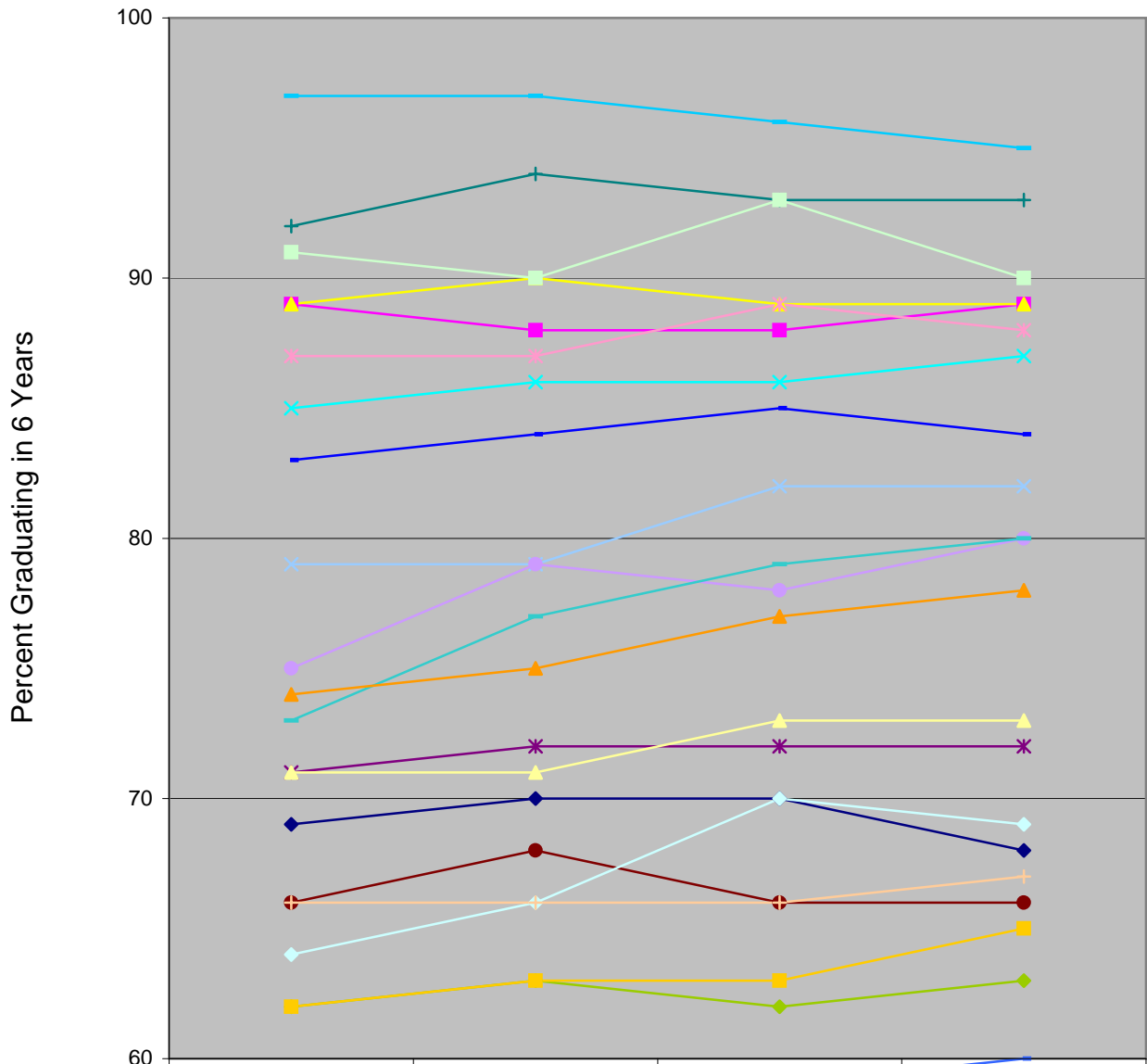
	2003	2004	2005	2006	2007	2008
UC Santa Cruz	16	20	20	18	17	19
Brandeis	33	33	33	26	28	27
Cal Tech	37	37	37	37	38	34
Carnegie Mellon	24	23	23	22	23	23
Indiana U-Bloomington	38	36	37	39	35	34
Iowa State	48	45	46	46	46	44
MIT	59	65	67	66	69	66
Pennsylvania State	38	35	34	35	40	32
Princeton	73	68	68	69	68	59
Purdue Main	36	36	35	36	34	33
Rice	39	40	37	34	33	35
Rutgers N Brunswick	31	32	33	32	35	35
Syracuse U	30	28	31	30	29	27
UC Berkeley	42	41	41	42	42	41
UC Santa Barbara	22	20	20	19	19	19
U of Colorado Boulder	33	31	34	35	35	33
U of Kansas	63	62	59	57	53	43
U of MD College Park	38	37	38	38	37	36
U of Nebraska Lincoln	61	64	63	66	71	69
U of Oregon	39	33	36	35	36	37
U of Texas Austin	57	58	56	56	54	52

1-Year Retention Rates for Frosh at UCSC and AAU Institutions without a Medical School 2004 to 2007



	2004	2005	2006	2007
UC Santa Cruz	88%	88%	88%	89%
Brandeis	94%	94%	96%	94%
Cal Tech	98%	98%	97%	98%
Carnegie Mellon	92%	94%	94%	96%
Indiana U-Bloomington	88%	87%	88%	89%
Iowa State	85%	86%	84%	85%
MIT	98%	98%	98%	98%
Pennsylvania State	92%	93%	94%	94%
Princeton	98%	98%	98%	97%
Purdue Main	86%	85%	84%	85%
Rice	98%	96%	96%	97%
Rutgers N Brunswick	88%	89%	89%	90%
Syracuse U	93%	91%	90%	91%
UC Berkeley	96%	96%	95%	97%
UC Santa Barbara	91%	90%	89%	91%
U of Colorado Boulder	84%	83%	84%	83%
U of Kansas	83%	82%	80%	79%
U of MD College Park	93%	93%	92%	93%
U of Nebraska Lincoln	79%	84%	84%	83%
U of Oregon	85%	83%	83%	84%
U of Texas Austin	93%	93%	93%	92%

6-Year Graduation Rates for UCSC and AAU Institutions without a Medical School 2004 - 2007



	2004	2005	2006	2007
UC Santa Cruz	69	70	70	68
Brandeis	89	88	88	89
Cal Tech	89	90	89	89
Carnegie Mellon	85	86	86	87
Indiana U-Bloomington	71	72	72	72
Iowa State	66	68	66	66
MIT	92	94	93	93
Pennsylvania State	83	84	85	84
Princeton	97	97	96	95
Purdue Main	64	66	70	69
Rice	91	90	93	90
Rutgers N Brunswick	71	71	73	73
Syracuse U	79	79	82	82
UC Berkeley	87	87	89	88
UC Santa Barbara	75	79	78	80
U of Colorado Boulder	66	66	66	67
U of Kansas	57	59	59	60
U of MD College Park	73	77	79	80
U of Nebraska Lincoln	62	63	62	63
U of Oregon	62	63	63	65
U of Texas Austin	74	75	77	78

GRADUATE EDUCATION

UCSC & AAU Institutions without a Medical School

Graduate Enrollments, Masters / Doctorates Awarded

Doctorates per 100 Faculty, Post Docs, Post Docs per 100 Faculty

	Graduate Enrollments Fall 2008	Masters Awarded 2007-08	Doctorates Awarded 2007-08	Doctorates per 100 Faculty 2007-08	Post Docs 2006	Post Docs per 100 Faculty 2006
UC Santa Cruz	1,637	278	131	23.9	140	25.5
Brandeis	2,146	596	84	23.9	100	28.4
Cal Tech	1,222	128	185	57.8	493	152.2
Carnegie Mellon	4,842	1,621	258	31.4	166	20.1
Indiana U-Bloomington	7,814	1,745	414	25.2	163	10.1
Iowa State	4,718	787	308	28.1	216	19.3
MIT	6,146	1,509	599	49.9	971	80.8
Pennsylvania State	6,233	1,267	620	26.6	396	17.3
Princeton	2,448	436	307	37.3	340	41.2
Purdue Main	7,381	1,326	600	25.6	322	14.3
Rice	2,232	512	186	31.9	140	24.7
Rutgers N Brunswick	7,538	1,469	431	27.2	161	10.2
Syracuse U	5,075	1,648	163	17.9	49	5.4
UC Berkeley	9,248	2,053	873	57.8	894	60.7
UC Santa Barbara	3,065	578	346	37.5	232	25.7
U of Colorado Boulder	4,943	996	323	26.4	650	55.7
U of Kansas	6,516	1,429	308	25.1	145	13.4
U of MD College Park	10,410	2,059	655	41.0	203	12.8
U of Nebraska Lincoln	5,047	802	255	21.9	113	10.0
U of Oregon	3,803	856	151	20.1	80	11.2
U of Texas Austin	12,595	2,975	865	35.3	216	8.6

Source: IPEDS for Graduate Enrollments, Doctorates Awarded, Faculty

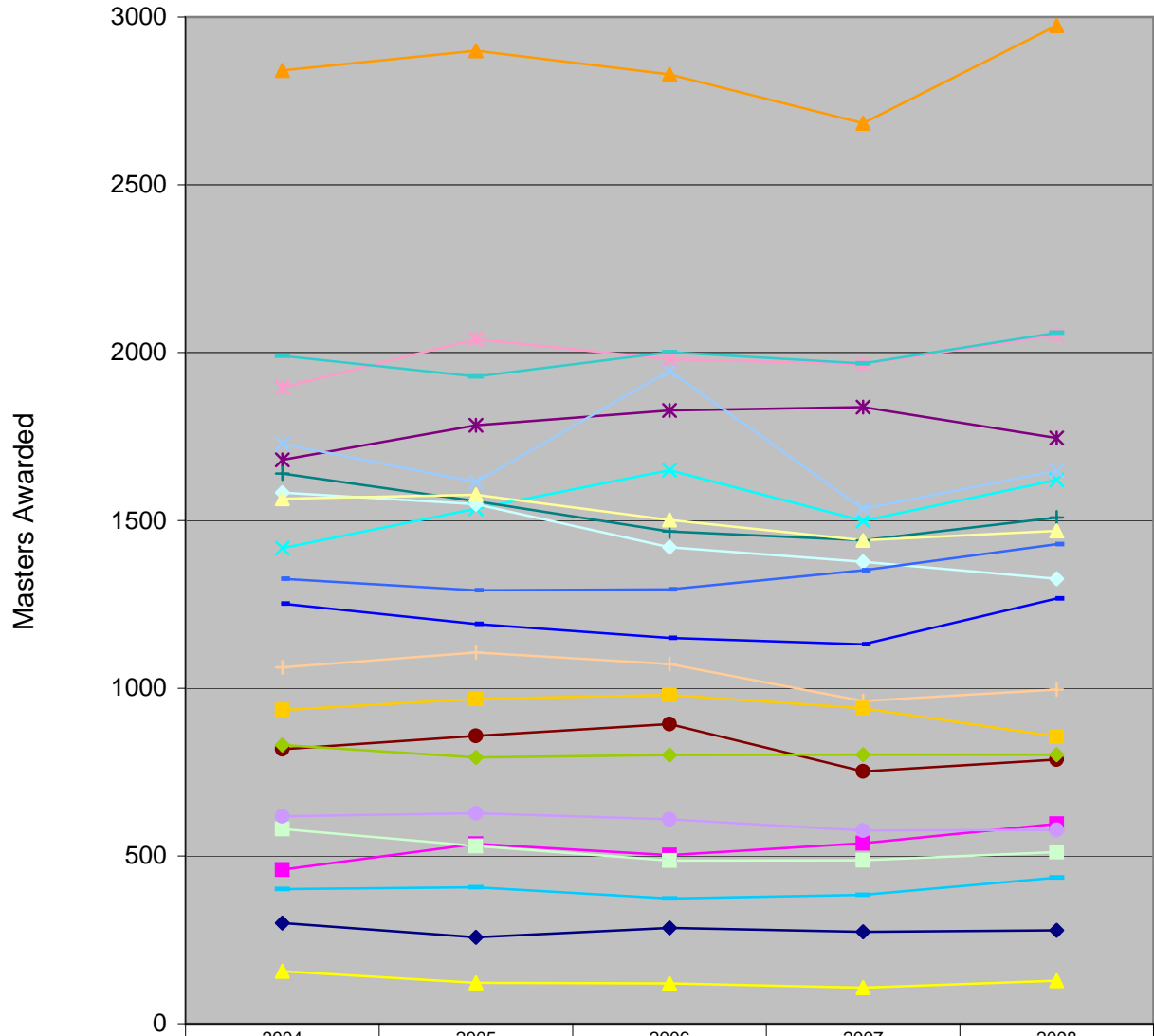
Source: CMUP and NSF for Postdocs

**Graduate Enrollments at UCSC and AAU Institutions
without a Medical School 2003 - 2008**

	Fall 2003	Fall 2004	Fall 2005	Fall 2006	Fall 2007	Fall 2008
UC Santa Cruz	1,337	1,342	1,387	1,403	1,422	1,637
Brandeis	1,810	1,872	1,922	2,009	2,100	2,146
Cal Tech	1,281	1,275	1,256	1,222	1,220	1,222
Carnegie Mellon	4,272	4,274	4,394	4,451	4,644	1,842
Indiana U-Bloomington	7,337	7,335	7,442	7,481	7,672	7,814
Iowa State	4,741	4,618	4,578	4,583	4,664	4,718
MIT	6,228	6,184	6,140	6,126	6,048	6,146
Pennsylvania State	6,793	6,465	6,072	6,181	6,233	6,233
Princeton	2,012	2,030	2,012	2,295	2,416	2,448
Purdue Main	7,099	6,984	6,935	7,003	6,959	7,381
Rice	1,948	1,922	1,983	2,013	2,144	2,232
Rutgers N Brunswick	7,577	7,513	7,369	7,252	7,470	7,538
Syracuse U	5,354	5,181	5,067	5,237	5,215	5,075
UC Berkeley	8,705	8,792	8,989	8,994	9,253	9,248
UC Santa Barbara	3,003	2,905	2,939	2,870	2,995	3,065
U of Colorado Boulder	5,555	5,434	4,885	4,794	4,924	4,943
U of Kansas	5,571	5,318	5,271	5,206	6,239	6,516
U of MD College Park	9,764	9,678	9,813	9,833	10,040	10,410
U of Nebraska Lincoln	4,289	4,246	4,241	4,336	4,497	5,047
U of Oregon	3,495	3,415	3,348	3,290	3,129	3,803
U of Texas Austin	11,297	11,282	11,232	11,101	10,941	12,595

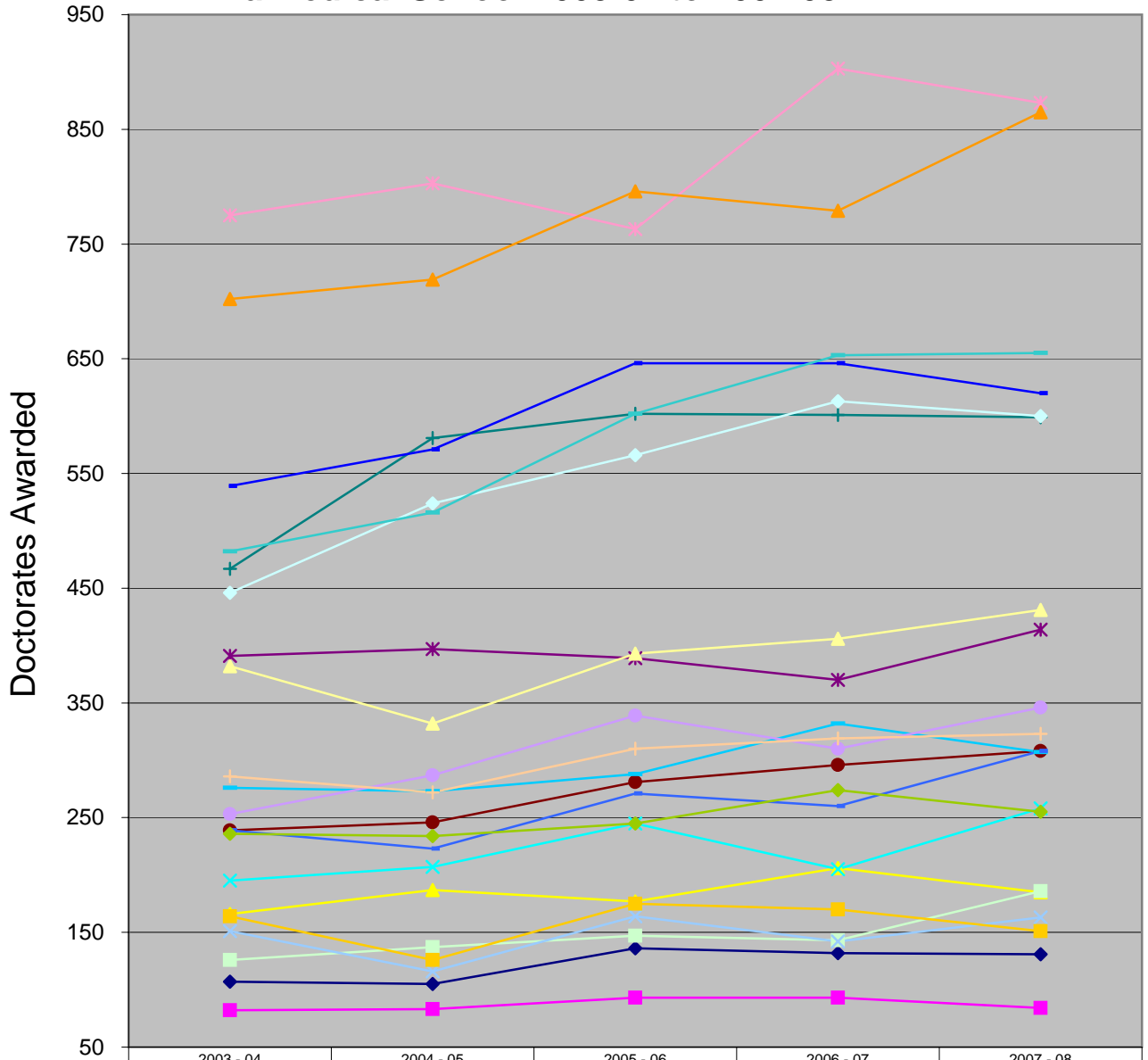
Source: IPEDS

Masters Degrees Awarded by UCSC and AAU Institutions without a Medical School 2003-04 to 2007-08



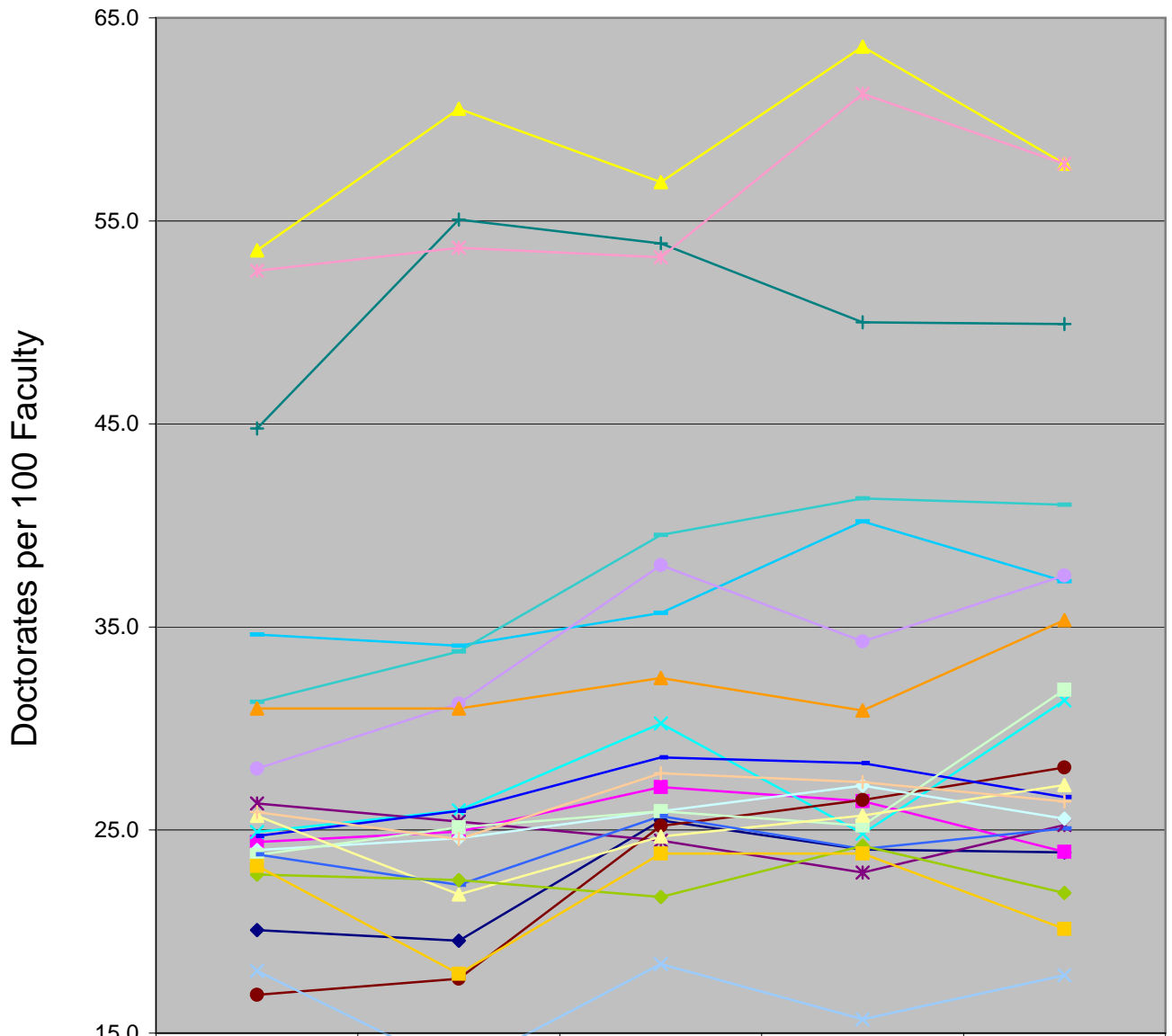
	2004	2005	2006	2007	2008
UC Santa Cruz	300	258	286	274	278
Brandeis	459	536	503	538	596
Cal Tech	156	122	120	108	128
Carnegie Mellon	1,417	1,535	1,650	1,499	1,621
Indiana U-Bloomington	1,680	1,783	1,828	1,838	1,745
Iowa State	818	858	893	752	787
MIT	1,640	1,557	1,467	1,441	1,509
Pennsylvania State	1,252	1,191	1,150	1,131	1,267
Princeton	401	407	373	384	436
Purdue Main	1,583	1,548	1,420	1,377	1,326
Rice	580	530	486	487	512
Rutgers N Brunswick	1,565	1,576	1,501	1,441	1,469
Syracuse U	1,728	1,614	1,946	1,535	1,648
UC Berkeley	1,896	2,040	1,980	1,966	2,053
UC Santa Barbara	618	627	609	576	578
U of Colorado Boulder	1,062	1,106	1,072	962	996
U of Kansas	1,326	1,292	1,294	1,351	1,429
U of MD College Park	1,990	1,929	2,001	1,968	2,059
U of Nebraska Lincoln	831	794	801	802	802
U of Oregon	935	968	980	940	856
U of Texas Austin	2,841	2,900	2,829	2,684	2,975

Doctorates Awarded by UCSC and AAU Institutions without a Medical School 2003-04 to 2007-08



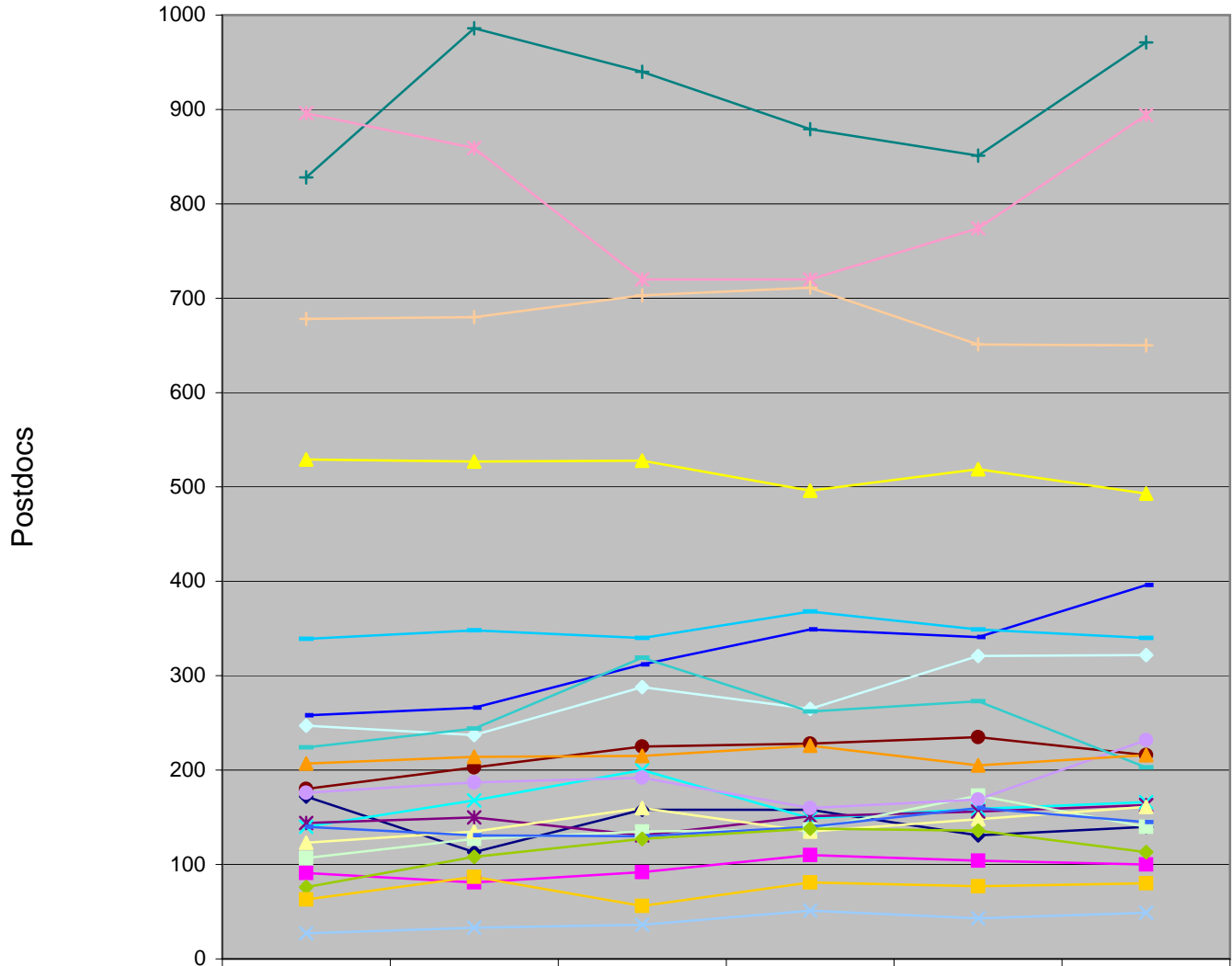
	2003 - 04	2004 - 05	2005 - 06	2006 - 07	2007 - 08
UC Santa Cruz	107	105	136	132	131
Brandeis	82	83	93	93	84
Cal Tech	166	187	177	206	185
Carnegie Mellon	195	207	245	205	258
Indiana U-Bloomington	391	397	389	370	414
Iowa State	239	246	281	296	308
MIT	467	581	602	601	599
Pennsylvania State	539	571	646	646	620
Princeton	276	273	288	332	307
Purdue Main	446	524	566	613	600
Rice	126	137	147	143	186
Rutgers N Brunswick	382	332	393	406	431
Syracuse U	151	116	164	142	163
UC Berkeley	775	803	763	903	873
UC Santa Barbara	253	287	339	310	346
U of Colorado Boulder	286	272	310	319	323
U of Kansas	239	223	271	260	308
U of MD College Park	482	516	602	653	655
U of Nebraska Lincoln	236	234	245	274	255
U of Oregon	164	126	175	170	151
U of Texas Austin	702	719	796	779	865

Doctorates Awarded per 100 Faculty for UCSC and AAU Institutions without a Medical School 2004-2008



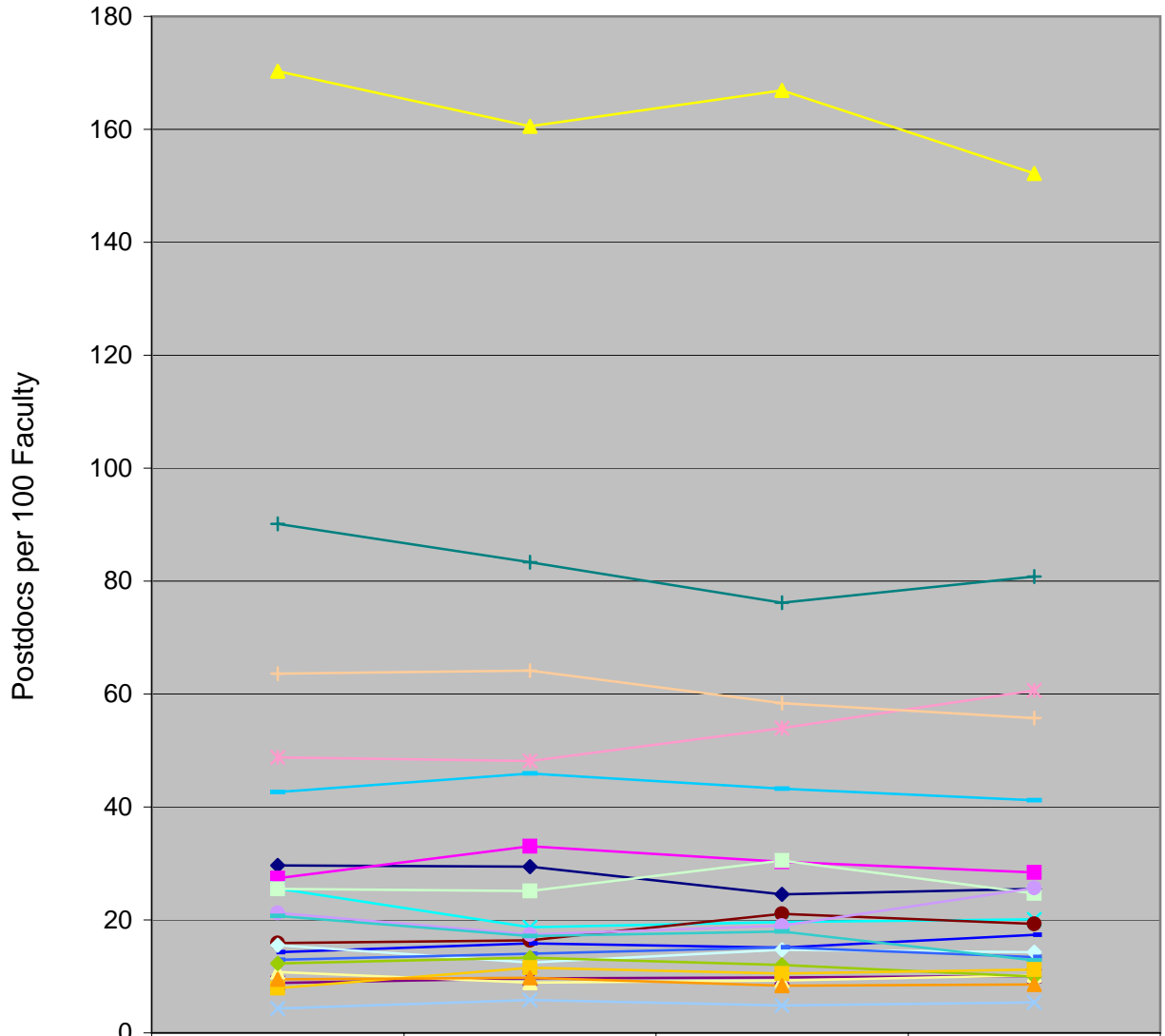
	2003 - 04	2004 - 05	2005 - 06	2006 - 07	2007 - 08
UC Santa Cruz	20.1	19.6	25.5	24.0	23.9
Brandeis	24.4	24.9	27.1	26.4	23.9
Cal Tech	53.5	60.5	56.9	63.6	57.8
Carnegie Mellon	24.9	26.0	30.2	24.8	31.4
Indiana U-Bloomington	26.3	25.4	24.5	22.9	25.2
Iowa State	16.9	17.7	25.2	26.5	28.1
MIT	44.8	55.1	53.9	50.0	49.9
Pennsylvania State	24.7	25.9	28.6	28.3	26.6
Princeton	34.6	34.1	35.7	40.2	37.3
Purdue Main	24.0	24.6	25.9	27.2	25.6
Rice	23.8	25.1	25.9	25.2	31.9
Rutgers N Brunswick	25.7	21.8	24.7	25.7	27.2
Syracuse U	18.1	13.2	18.4	15.7	17.9
UC Berkeley	52.5	53.7	53.2	61.3	57.8
UC Santa Barbara	28.0	31.2	38.0	34.3	37.5
U of Colorado Boulder	25.9	24.5	27.8	27.4	26.4
U of Kansas	23.8	22.3	25.7	24.1	25.1
U of MD College Park	31.3	33.8	39.5	41.3	41.0
U of Nebraska Lincoln	22.8	22.5	21.7	24.2	21.9
U of Oregon	23.2	17.9	23.8	23.8	20.1
U of Texas Austin	31.0	31.0	32.5	30.9	35.3

Postdoctoral Appointments at UCSC and AAU Institutions without a Medical School 2001 - 2006



	2001	2002	2003	2004	2005	2006
UC Santa Cruz	172	113	158	158	131	140
Brandeis	91	81	92	110	104	100
Cal Tech	529	527	528	496	519	493
Carnegie Mellon	140	168	200	149	159	166
Indiana U-Bloomington	144	150	131	151	156	163
Iowa State	180	203	225	228	235	216
MIT	828	986	940	879	851	971
Pennsylvania State	258	266	312	349	341	396
Princeton	339	348	340	368	349	340
Purdue Main	247	237	288	265	321	322
Rice	107	127	135	137	173	140
Rutgers N Brunswick	123	135	160	135	148	161
Syracuse U	27	33	36	51	43	49
UC Berkeley	896	859	720	720	774	894
UC Santa Barbara	176	187	192	160	169	232
U of Colorado Boulder	678	680	703	711	651	650
U of Kansas	140	131	130	140	160	145
U of MD College Park	224	244	319	262	273	203
U of Nebraska Lincoln	76	108	127	138	136	113
U of Oregon	63	87	56	81	77	80
U of Texas Austin	207	214	215	226	205	216

Post Docs per 100 Faculty at UCSC and AAU Institutions without a Medical School 2003 - 2006



	2003	2004	2005	2006
UC Santa Cruz	29.64	29.42	24.53	25.50
Brandeis	27.38	33.03	30.32	28.41
Cal Tech	170.32	160.52	166.88	152.16
Carnegie Mellon	25.54	18.70	19.63	20.10
Indiana U-Bloomington	8.82	9.67	9.82	10.09
Iowa State	15.90	16.39	21.08	19.32
MIT	90.12	83.32	76.19	80.78
Pennsylvania State	14.31	15.86	15.09	17.35
Princeton	42.66	45.94	43.25	41.16
Purdue Main	15.51	12.44	14.70	14.28
Rice	25.47	25.14	30.51	24.69
Rutgers N Brunswick	10.77	8.88	9.30	10.20
Syracuse U	4.31	5.80	4.83	5.41
UC Berkeley	48.81	48.13	53.97	60.65
UC Santa Barbara	21.26	17.41	18.97	25.66
U of Colorado Boulder	63.62	64.17	58.39	55.75
U of Kansas	12.95	14.00	15.17	13.43
U of MD College Park	20.73	17.16	17.93	12.85
U of Nebraska Lincoln	12.27	13.29	12.05	9.99
U of Oregon	7.93	11.52	10.49	11.22
U of Texas Austin	9.49	9.74	8.37	8.56

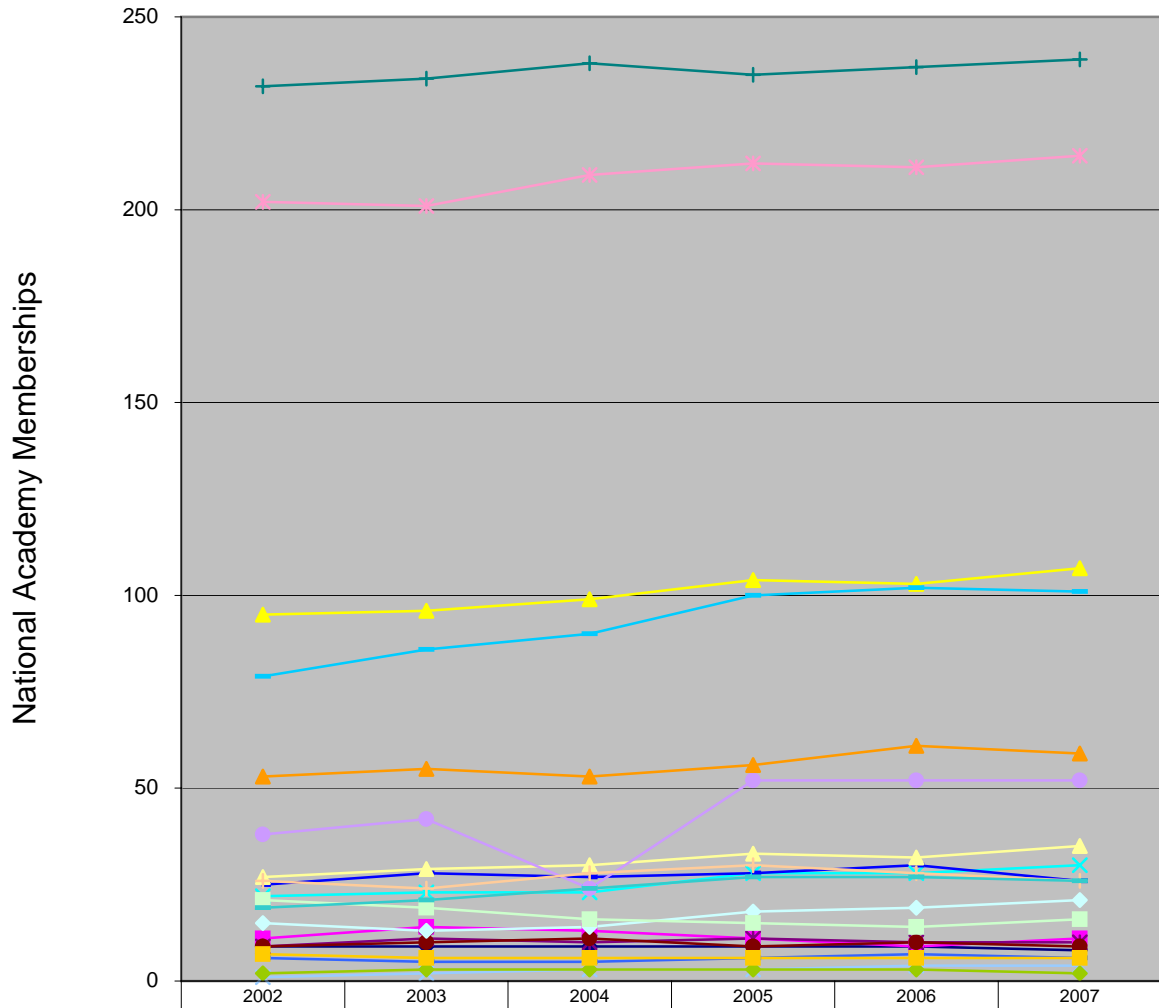
FACULTY AWARDS AND NATIONAL ACADEMY MEMBERSHIP

UCSC & AAU Institutions without a Medical School National Academy Membership, Faculty Awards, Full-Time Faculty

	National Academy Membership 2007	Faculty Awards 2007	Full-Time Faculty 2007
UC Santa Cruz	8	9	548
Brandeis	11	4	351
Cal Tech	107	20	320
Carnegie Mellon	30	11	822
Indiana U-Bloomington	10	17	1,640
Iowa State	9	5	1,097
MIT	239	36	1,200
Pennsylvania State	26	23	2,329
Princeton	101	34	824
Purdue Main	21	21	2,347
Rice	16	2	583
Rutgers N Brunswick	35	14	1,584
Syracuse U	4	6	913
UC Berkeley	214	42	1,510
UC Santa Barbara	52	16	922
U of Colorado Boulder	26	17	1,223
U of Kansas	6	7	1,228
U of MD College Park	26	19	1,597
U of Nebraska Lincoln	2	7	1,164
U of Oregon	6	7	750
U of Texas Austin	59	36	2,448

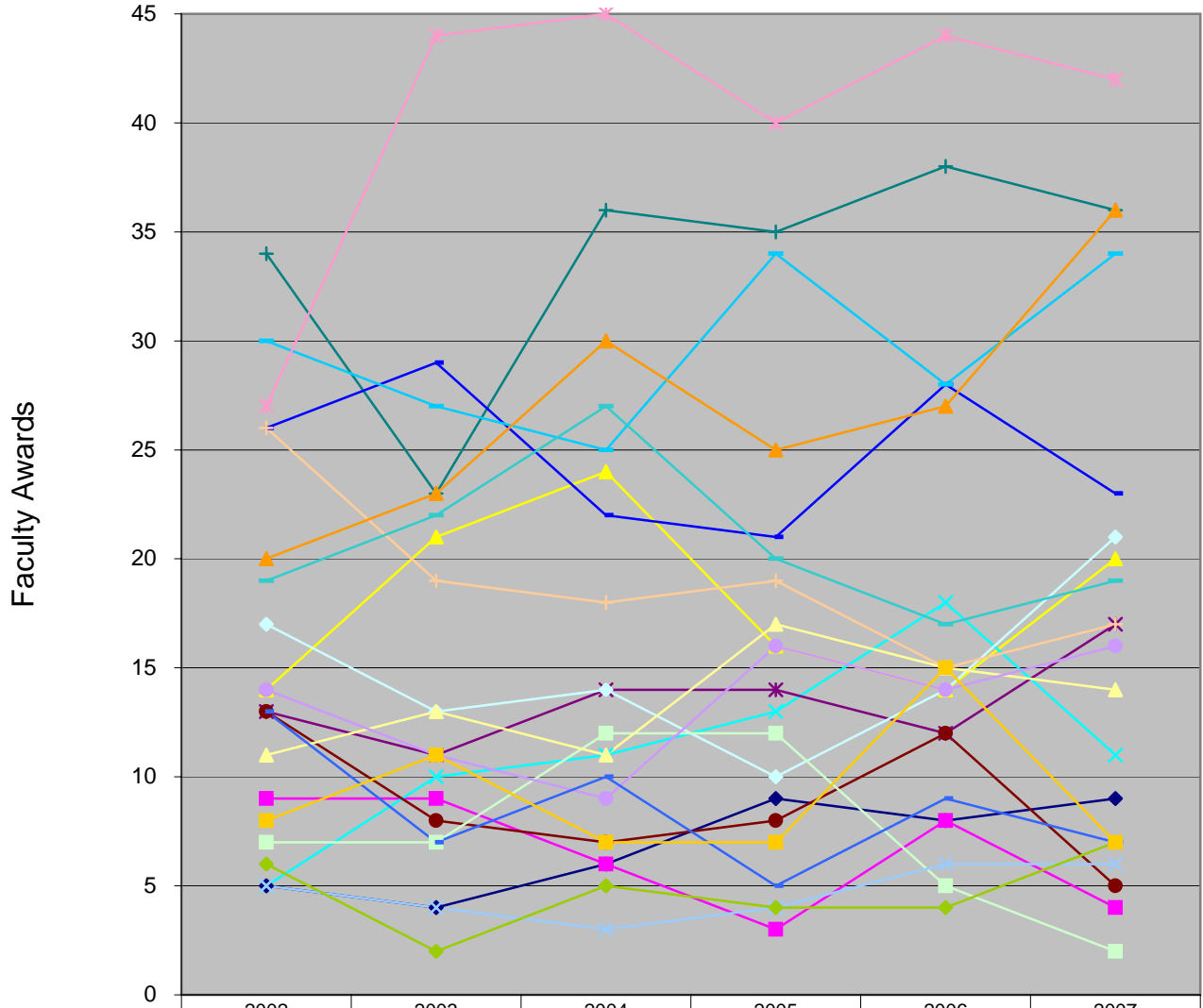
Source: CMUP for National Academy Membership, Faculty Awards
IPEDS for Faculty

National Academy Memberships for UCSC and AAU Institutions without a Medical School 2002-2007



	2002	2003	2004	2005	2006	2007
UC Santa Cruz	9	9	9	9	9	8
Brandeis	11	14	13	11	9	11
Cal Tech	95	96	99	104	103	107
Carnegie Mellon	22	23	23	28	28	30
Indiana U-Bloomington	9	11	10	11	10	10
Iowa State	9	10	11	9	10	9
MIT	232	234	238	235	237	239
Pennsylvania State	25	28	27	28	30	26
Princeton	79	86	90	100	102	101
Purdue Main	15	13	14	18	19	21
Rice	21	19	16	15	14	16
Rutgers N Brunswick	27	29	30	33	32	35
Syracuse U	1	2	3	3	4	4
UC Berkeley	202	201	209	212	211	214
UC Santa Barbara	38	42	24	52	52	52
U of Colorado Boulder	26	24	28	30	28	26
U of Kansas	6	5	5	6	7	6
U of MD College Park	19	21	24	27	27	26
U of Nebraska Lincoln	2	3	3	3	3	2
U of Oregon	7	6	6	6	6	6
U of Texas Austin	53	55	53	56	61	59

Faculty Awards for UCSC and AAU Institutions without a Medical School 2002-2007



	2002	2003	2004	2005	2006	2007
UC Santa Cruz	5	4	6	9	8	9
Brandeis	9	9	6	3	8	4
Cal Tech	14	21	24	16	14	20
Carnegie Mellon	5	10	11	13	18	11
Indiana U-Bloomington	13	11	14	14	12	17
Iowa State	13	8	7	8	12	5
MIT	34	23	36	35	38	36
Pennsylvania State	26	29	22	21	28	23
Princeton	30	27	25	34	28	34
Purdue Main	17	13	14	10	14	21
Rice	7	7	12	12	5	2
Rutgers N Brunswick	11	13	11	17	15	14
Syracuse U	5	4	3	4	6	6
UC Berkeley	27	44	45	40	44	42
UC Santa Barbara	14	11	9	16	14	16
U of Colorado Boulder	26	19	18	19	15	17
U of Kansas	13	7	10	5	9	7
U of MD College Park	19	22	27	20	17	19
U of Nebraska Lincoln	6	2	5	4	4	7
U of Oregon	8	11	7	7	15	7
U of Texas Austin	20	23	30	25	27	36

**Full-Time Total and Ladder Instructional Faculty for UCSC and AAU Institutions
without a Medical School Fall 2002 - 2007**

Institution	Fall 2002		Fall 2003		Fall 2004		Fall 2005		Fall 2006		Fall 2007	
	Faculty Total	Ladder Faculty	Faculty Total	Ladder Faculty	Faculty Total	Ladder Faculty	Faculty Total	Ladder Faculty	Faculty Total	Ladder Faculty	Faculty Total	Ladder Faculty
UC Santa Cruz	516	447	533	474	537	485	534	483	549	498	548	483
Brandeis	339	291	336	290	333	290	343	288	352	314	351	311
Cal Tech	301	261	310	273	309	272	311	274	324	283	320	283
Carnegie Mellon	747	600	783	638	797	635	810	613	826	609	822	606
Indiana U-Bloomington	1,432	1,243	1,486	1,332	1,562	1,390	1,589	1,408	1,615	1,430	1,640	1,443
Iowa State	1,376	1,230	1,415	1,257	1,391	1,231	1,115	957	1,118	942	1,097	925
MIT	1,044	850	1,043	868	1,055	868	1,117	949	1,202	1,004	1,200	963
Pennsylvania State	2,125	1,624	2,181	1,642	2,201	1,634	2,260	1,728	2,283	1,748	2,329	1,767
Princeton	798	682	797	682	801	695	807	693	826	703	824	691
Purdue Main	1,831	1,742	1,857	1,765	2,131	1,758	2,183	1,773	2,255	1,815	2,347	1,889
Rice	503	447	530	473	545	474	567	475	567	479	583	491
Rutgers N Brunswick	1,522	1,395	1,486	1,382	1,521	1,407	1,592	1,442	1,579	1,437	1,584	1,427
Syracuse U	859	834	864	836	879	857	891	868	906	872	913	879
UC Berkeley	1,462	1,360	1,475	1,356	1,496	1,378	1,434	1,238	1,474	1,323	1,510	1,358
UC Santa Barbara	870	765	903	787	919	799	891	783	904	781	922	789
U of Colorado Boulder	1,127	985	1,105	945	1,108	940	1,115	952	1,166	979	1,223	1,005
U of Kansas	994	963	1,004	968	1,000	974	1,055	1,014	1,080	1,032	1,228	1,148
U of MD College Park	1,589	1,355	1,539	1,341	1,527	1,340	1,523	1,327	1,580	1,359	1,597	1,351
U of Nebraska Lincoln	1,088	991	1,035	934	1,038	939	1,129	1,003	1,131	999	1,164	1,029
U of Oregon	704	602	706	593	703	588	734	626	713	599	750	614
U of Texas Austin	2,324	1,791	2,265	1,791	2,320	1,816	2,450	1,811	2,522	1,858	2,448	1,883

Source: IPEDS

DIVERSITY

UCSC & AAU Institutions without a Medical School

Ethnicity: Undergraduate & Graduate Students, Ladder Faculty, Graduation Rates

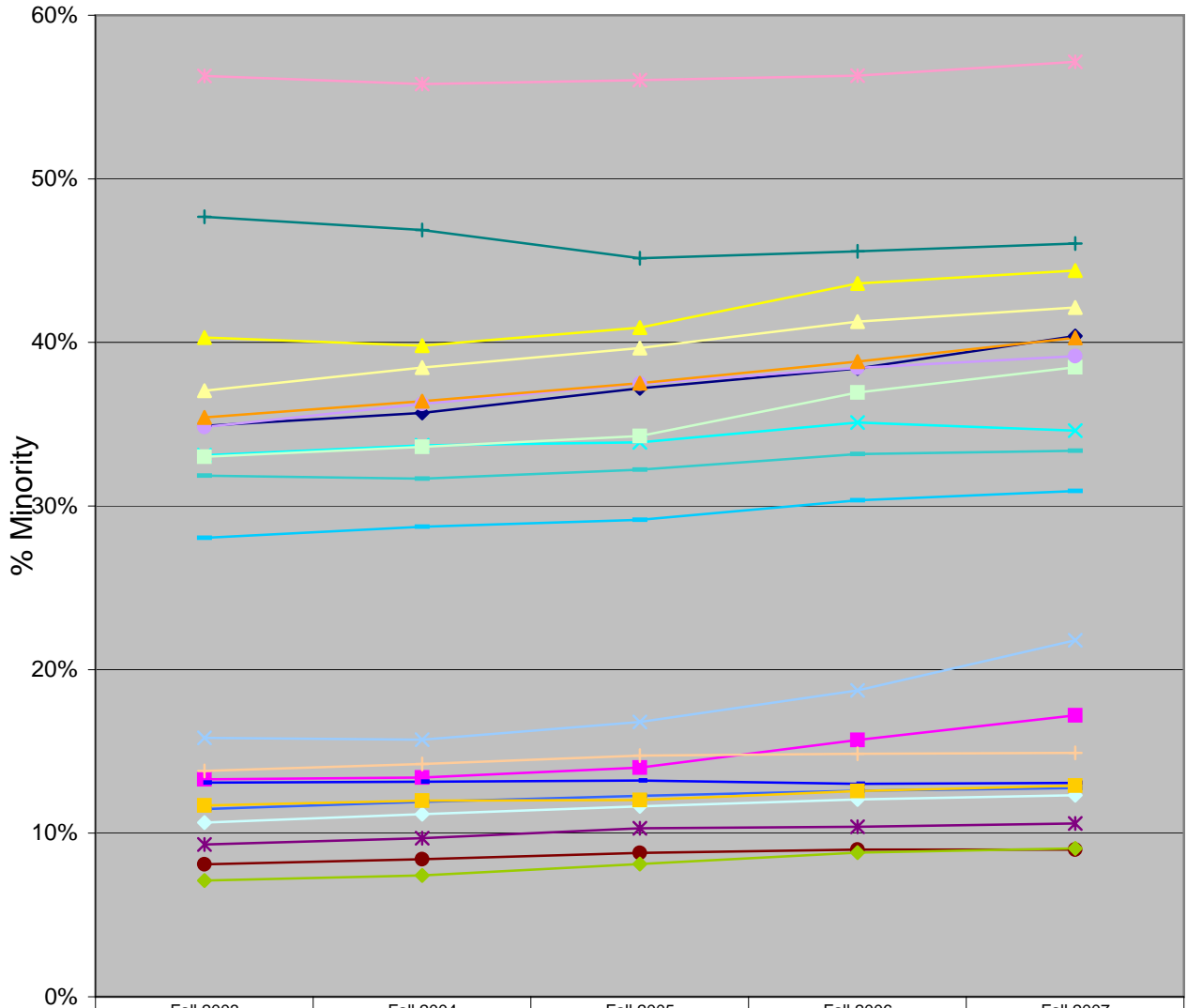
	Undergraduate Enrollments 2007		Graduate Enrollments 2007		Ladder Faculty 2007		2007 Graduation Rate Bachelors in 6 Years 2001 Frosh Cohort				2006 6-Yr Graduation Rate	
	% Minority	% UR	% Minority	% UR	% Minority	% UR	All	Black	Hispanic	Asian	All	UR
UC Santa Cruz	40%	20%	21%	11%	23%	11%	68%	65%	65%	69%	70%	66%
Brandeis	17%	8%	6%	3%	11%	4%	89%	86%	87%	87%	88%	75%
Cal Tech	44%	6%	15%	5%	13%	3%	89%	100%	58%	92%	89%	88%
Carnegie Mellon	35%	10%	13%	4%	15%	5%	87%	81%	76%	88%	86%	80%
Indiana U-Bloomington	11%	7%	10%	7%	15%	8%	72%	50%	63%	74%	72%	58%
Iowa State	9%	6%	7%	5%	17%	4%	66%	47%	59%	64%	66%	52%
MIT	46%	20%	17%	5%	14%	4%	93%	87%	83%	96%	93%	85%
Pennsylvania State	13%	8%	9%	6%	15%	5%	84%	66%	75%	80%	85%	72%
Princeton	31%	17%	12%	6%	15%	6%	95%	94%	91%	97%	96%	95%
Purdue Main	12%	7%	9%	6%	18%	5%	69%	54%	50%	65%	70%	55%
Rice	38%	19%	18%	10%	15%	6%	90%	90%	87%	95%	93%	90%
Rutgers N Brunswick	42%	18%	19%	13%	18%	6%	73%	65%	63%	76%	73%	68%
Syracuse U	22%	14%	11%	8%	19%	11%	82%	78%	74%	82%	82%	77%
UC Berkeley	57%	15%	26%	10%	19%	7%	88%	68%	78%	91%	89%	79%
UC Santa Barbara	39%	23%	16%	9%	17%	8%	80%	74%	76%	78%	79%	75%
U of Colorado Boulder	15%	9%	11%	7%	15%	7%	67%	51%	55%	65%	66%	56%
U of Kansas	13%	8%	10%	7%	15%	6%	60%	42%	56%	65%	59%	47%
U of MD College Park	33%	19%	19%	12%	19%	8%	80%	69%	71%	85%	79%	72%
U of Nebraska Lincoln	9%	6%	7%	5%	13%	5%	63%	51%	41%	65%	62%	44%
U of Oregon	13%	7%	9%	5%	12%	6%	65%	71%	66%	66%	63%	56%
U of Texas Austin	40%	23%	17%	10%	11%	8%	78%	71%	70%	82%	77%	70%

Minority: Black, Hispanic, American Indian / Alaska Native, Asian

Underrepresented: Black, Hispanic, American Indian / Alaska Native

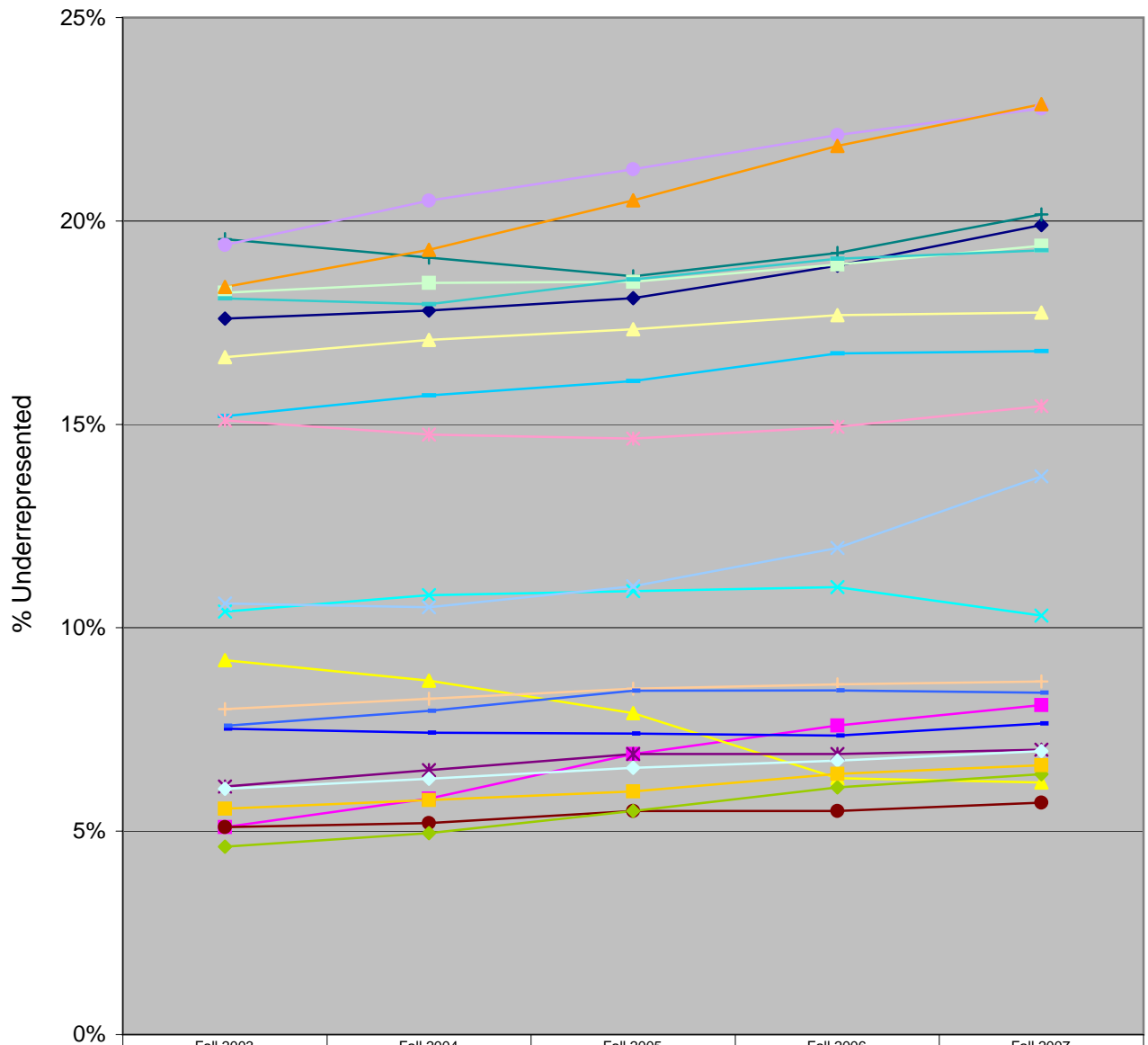
Source: IPEDS

Undergraduate Students: Percentage Minority at UCSC and AAU Institutions without a Medical School Fall 2003 - Fall 2007



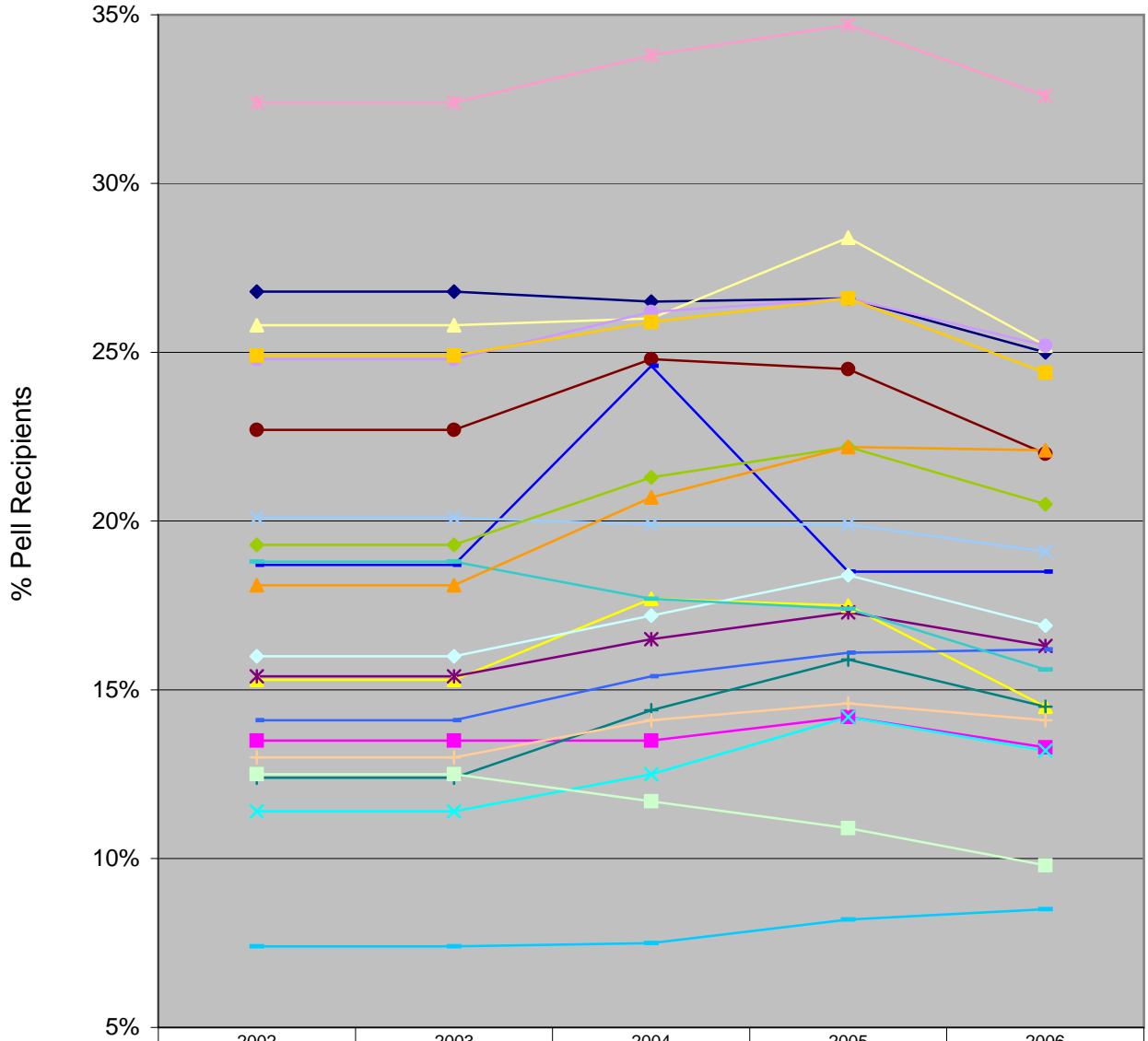
	Fall 2003	Fall 2004	Fall 2005	Fall 2006	Fall 2007
UC Santa Cruz	34.9%	35.7%	37.2%	38.4%	40.4%
Brandeis	13.3%	13.4%	14.0%	15.7%	17.2%
Cal Tech	40.3%	39.8%	40.9%	43.6%	44.4%
Carnegie Mellon	33.1%	33.7%	33.9%	35.1%	34.6%
Indiana U-Bloomington	9.3%	9.7%	10.3%	10.4%	10.6%
Iowa State	8.1%	8.4%	8.8%	9.0%	9.0%
MIT	47.7%	46.9%	45.2%	45.6%	46.0%
Pennsylvania State	13.1%	13.1%	13.2%	13.0%	13.1%
Princeton	28.1%	28.7%	29.2%	30.4%	30.9%
Purdue Main	10.6%	11.2%	11.6%	12.1%	12.3%
Rice	33.0%	33.6%	34.3%	36.9%	38.5%
Rutgers N Brunswick	37.1%	38.5%	39.7%	41.3%	42.1%
Syracuse U	15.8%	15.7%	16.8%	18.7%	21.8%
UC Berkeley	56.3%	55.8%	56.0%	56.3%	57.1%
UC Santa Barbara	34.8%	36.2%	37.5%	38.4%	39.2%
U of Colorado Boulder	13.8%	14.2%	14.7%	14.9%	14.9%
U of Kansas	11.5%	11.9%	12.3%	12.6%	12.8%
U of MD College Park	31.9%	31.7%	32.2%	33.2%	33.4%
U of Nebraska Lincoln	7.1%	7.4%	8.1%	8.8%	9.1%
U of Oregon	11.7%	12.0%	12.0%	12.6%	12.9%
U of Texas Austin	35.4%	36.4%	37.5%	38.8%	40.3%

Undergraduate Students: Percentage Underrepresented at UCSC and AAU Institutions without a Medical School Fall 2003 - Fall 2007



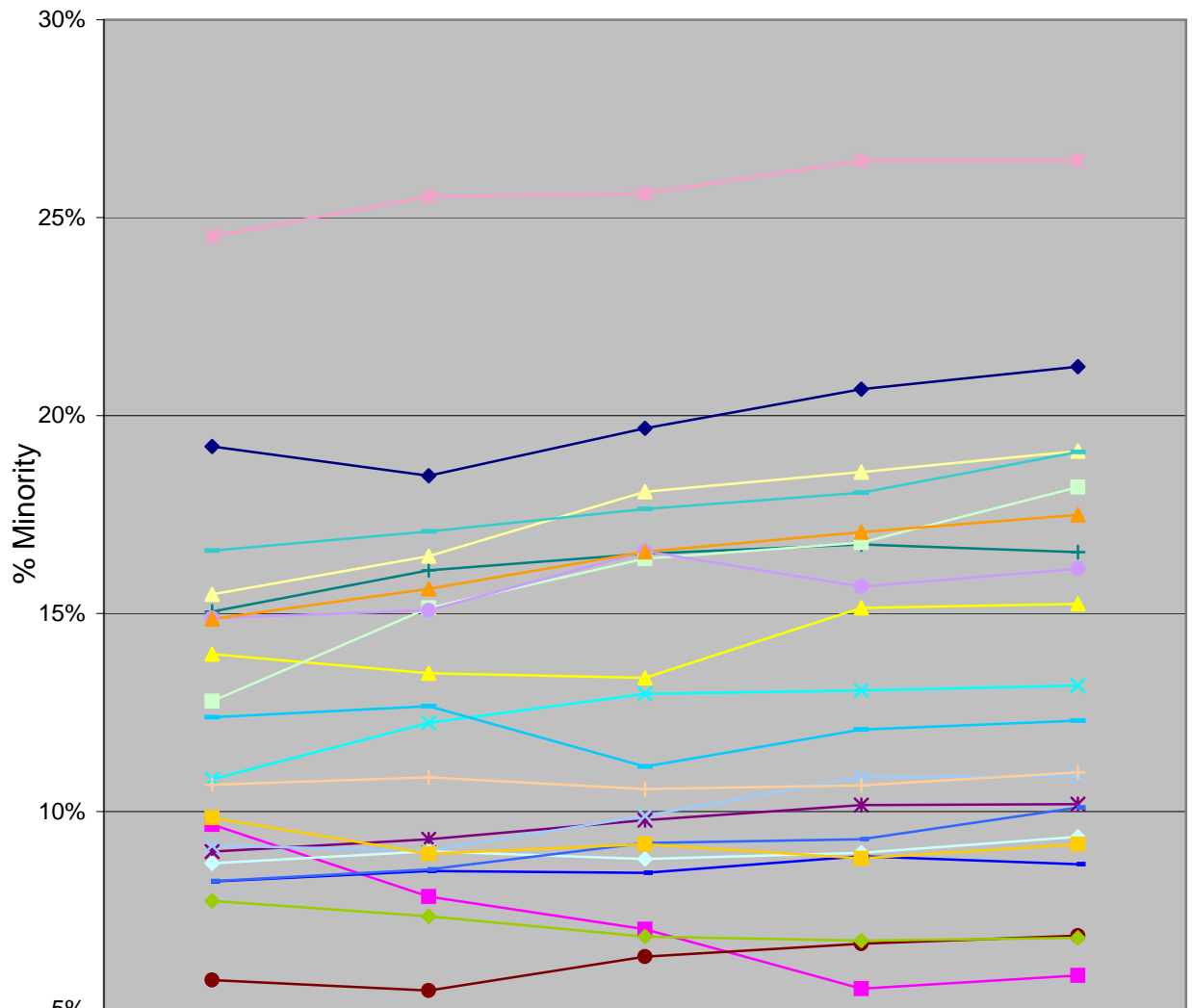
	Fall 2003	Fall 2004	Fall 2005	Fall 2006	Fall 2007
UC Santa Cruz	17.6%	17.8%	18.1%	18.9%	19.9%
Brandeis	5.1%	5.8%	6.9%	7.6%	8.1%
Cal Tech	9.2%	8.7%	7.9%	6.3%	6.2%
Carnegie Mellon	10.4%	10.8%	10.9%	11.0%	10.3%
Indiana U-Bloomington	6.1%	6.5%	6.9%	6.9%	7.0%
Iowa State	5.1%	5.2%	5.5%	5.5%	5.7%
MIT	19.6%	19.1%	18.6%	19.2%	20.2%
Pennsylvania State	7.5%	7.4%	7.4%	7.4%	7.6%
Princeton	15.2%	15.7%	16.1%	16.7%	16.8%
Purdue Main	6.0%	6.3%	6.6%	6.7%	7.0%
Rice	18.2%	18.5%	18.5%	18.9%	19.4%
Rutgers N Brunswick	16.7%	17.1%	17.3%	17.7%	17.7%
Syracuse U	10.6%	10.5%	11.0%	12.0%	13.7%
UC Berkeley	15.1%	14.7%	14.6%	14.9%	15.4%
UC Santa Barbara	19.4%	20.5%	21.3%	22.1%	22.8%
U of Colorado Boulder	8.0%	8.3%	8.5%	8.6%	8.7%
U of Kansas	7.6%	8.0%	8.5%	8.5%	8.4%
U of MD College Park	18.1%	18.0%	18.6%	19.1%	19.3%
U of Nebraska Lincoln	4.6%	5.0%	5.5%	6.1%	6.4%
U of Oregon	5.6%	5.8%	6.0%	6.4%	6.6%
U of Texas Austin	18.4%	19.3%	20.5%	21.8%	22.9%

**Percent of Students Receiving Pell Grants
at UCSC and AAU Institutions without a Medical School 2002 - 2006**



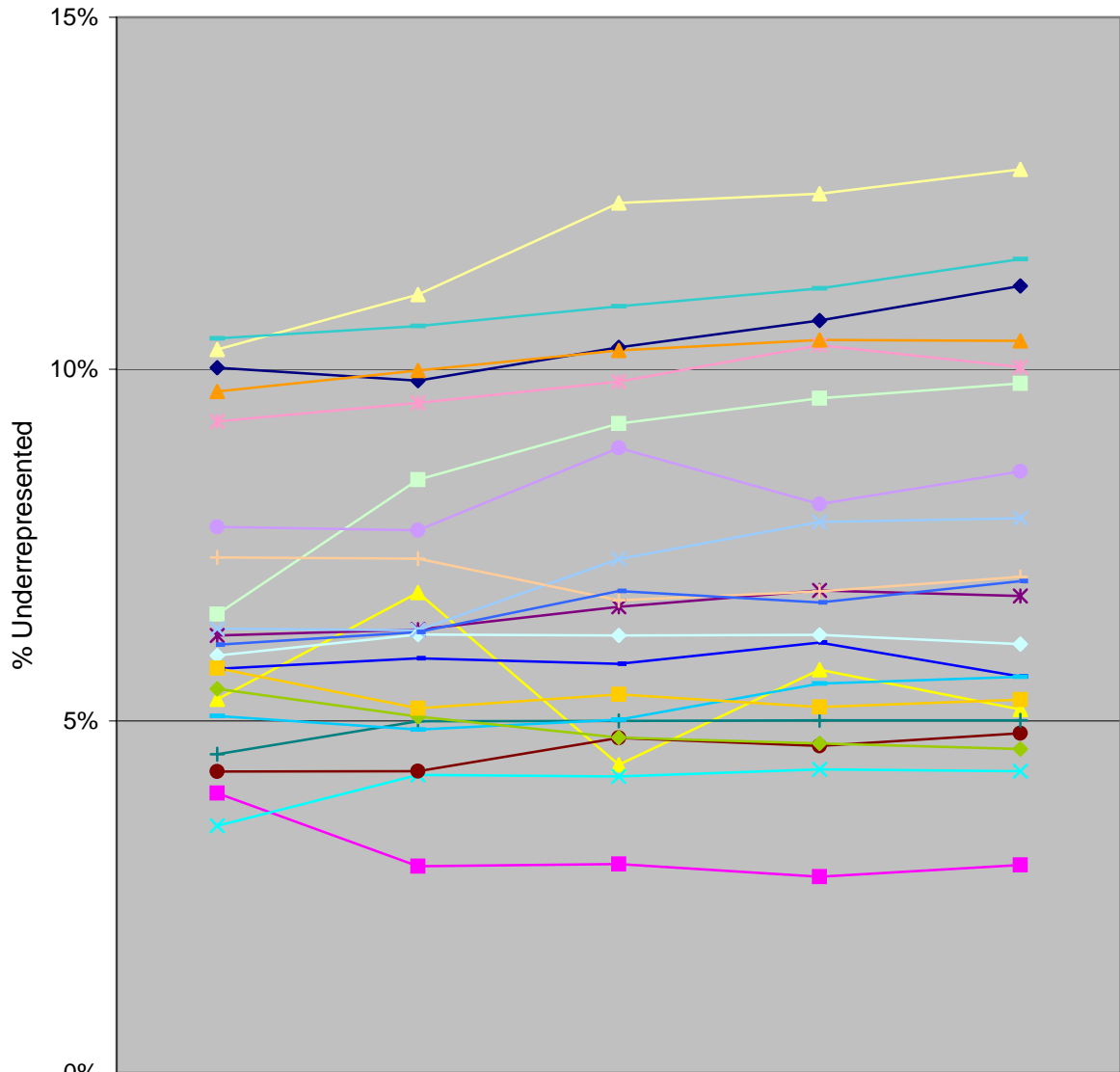
	2002	2003	2004	2005	2006
UC Santa Cruz	27%	27%	27%	27%	25%
Brandeis	14%	14%	14%	14%	13%
Cal Tech	15%	15%	18%	18%	15%
Carnegie Mellon	11%	11%	13%	14%	13%
Indiana U-Bloomington	15%	15%	17%	17%	16%
Iowa State	23%	23%	25%	25%	22%
MIT	12%	12%	14%	16%	15%
Pennsylvania State	19%	19%	25%	19%	19%
Princeton	7%	7%	8%	8%	9%
Purdue Main	16%	16%	17%	18%	17%
Rice	13%	13%	12%	11%	10%
Rutgers N Brunswick	26%	26%	26%	28%	25%
Syracuse U	20%	20%	20%	20%	19%
UC Berkeley	32%	32%	34%	35%	33%
UC Santa Barbara	25%	25%	26%	27%	25%
U of Colorado Boulder	13%	13%	14%	15%	14%
U of Kansas	14%	14%	15%	16%	16%
U of MD College Park	19%	19%	18%	17%	16%
U of Nebraska Lincoln	19%	19%	21%	22%	21%
U of Oregon	25%	25%	26%	27%	24%
U of Texas Austin	18%	18%	21%	22%	22%

Graduate Students: Percentage Minority at UCSC and AAU Institutions without a Medical School Fall 2003 - Fall 2007



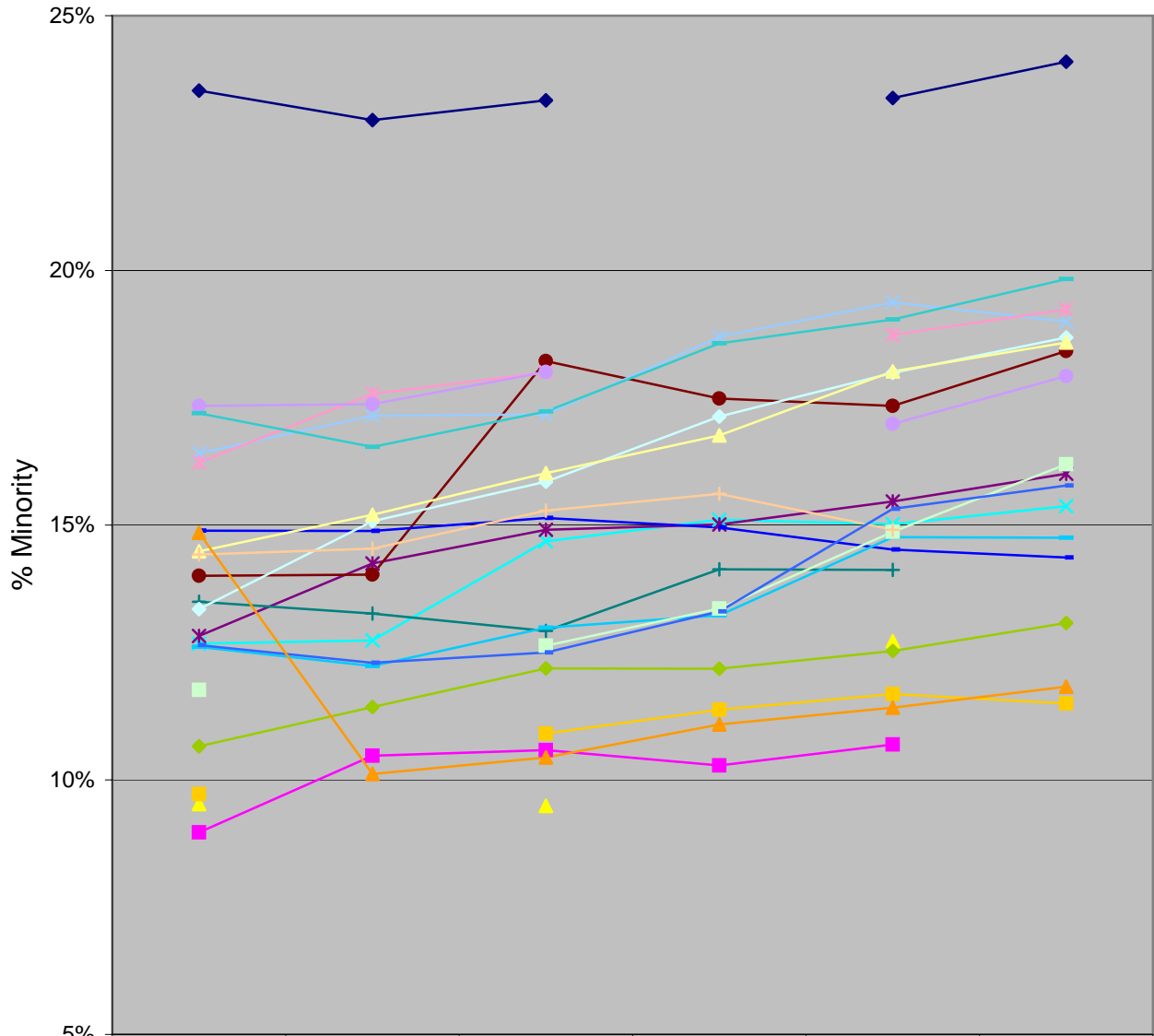
	Fall 2003	Fall 2004	Fall 2005	Fall 2006	Fall 2007
UC Santa Cruz	19.2%	18.5%	19.7%	20.7%	21.2%
Brandeis	9.7%	7.9%	7.0%	5.5%	5.9%
Cal Tech	14.0%	13.5%	13.4%	15.1%	15.2%
Carnegie Mellon	10.8%	12.2%	13.0%	13.1%	13.2%
Indiana U-Bloomington	9.0%	9.3%	9.8%	10.2%	10.2%
Iowa State	5.7%	5.5%	6.3%	6.7%	6.9%
MIT	15.0%	16.1%	16.5%	16.7%	16.6%
Pennsylvania State	8.2%	8.5%	8.4%	8.9%	8.7%
Princeton	12.4%	12.7%	11.1%	12.1%	12.3%
Purdue Main	8.7%	9.0%	8.8%	9.0%	9.4%
Rice	12.8%	15.1%	16.4%	16.8%	18.2%
Rutgers N Brunswick	15.5%	16.5%	18.1%	18.6%	19.1%
Syracuse U	9.1%	9.0%	9.9%	10.9%	10.9%
UC Berkeley	24.5%	25.5%	25.6%	26.4%	26.4%
UC Santa Barbara	14.9%	15.1%	16.6%	15.7%	16.1%
U of Colorado Boulder	10.7%	10.9%	10.6%	10.7%	11.0%
U of Kansas	8.2%	8.5%	9.2%	9.3%	10.1%
U of MD College Park	16.6%	17.1%	17.6%	18.1%	19.1%
U of Nebraska Lincoln	7.7%	7.3%	6.8%	6.7%	6.8%
U of Oregon	9.8%	8.9%	9.2%	8.8%	9.2%
U of Texas Austin	14.9%	15.6%	16.6%	17.1%	17.5%

Graduate Students: Percentage Underrepresented at UCSC and AAU Institutions without a Medical School Fall 2003 - Fall 2007



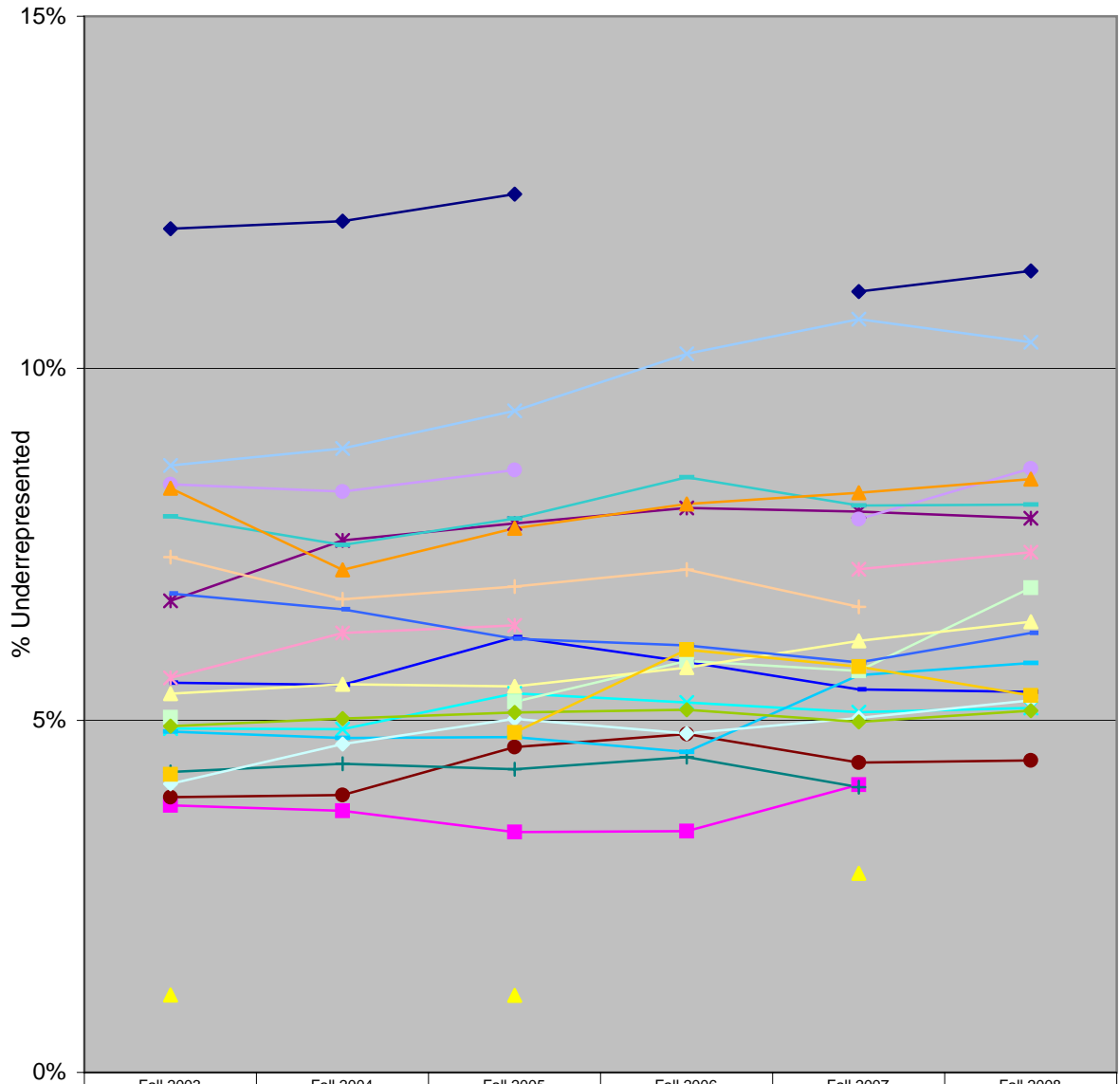
	Fall 2003	Fall 2004	Fall 2005	Fall 2006	Fall 2007
UC Santa Cruz	10.0%	9.8%	10.3%	10.7%	11.2%
Brandeis	4.0%	2.9%	3.0%	2.8%	3.0%
Cal Tech	5.3%	6.8%	4.4%	5.7%	5.2%
Carnegie Mellon	3.5%	4.2%	4.2%	4.3%	4.3%
Indiana U-Bloomington	6.2%	6.3%	6.6%	6.9%	6.8%
Iowa State	4.3%	4.3%	4.8%	4.6%	4.8%
MIT	4.5%	5.0%	5.0%	5.0%	5.0%
Pennsylvania State	5.7%	5.9%	5.8%	6.1%	5.6%
Princeton	5.1%	4.9%	5.0%	5.5%	5.6%
Purdue Main	5.9%	6.2%	6.2%	6.2%	6.1%
Rice	6.5%	8.4%	9.2%	9.6%	9.8%
Rutgers N Brunswick	10.3%	11.1%	12.4%	12.5%	12.8%
Syracuse U	6.3%	6.3%	7.3%	7.8%	7.9%
UC Berkeley	9.3%	9.5%	9.8%	10.3%	10.0%
UC Santa Barbara	7.8%	7.7%	8.9%	8.1%	8.5%
U of Colorado Boulder	7.3%	7.3%	6.7%	6.8%	7.0%
U of Kansas	6.1%	6.3%	6.8%	6.7%	7.0%
U of MD College Park	10.4%	10.6%	10.9%	11.1%	11.6%
U of Nebraska Lincoln	5.5%	5.1%	4.8%	4.7%	4.6%
U of Oregon	5.8%	5.2%	5.4%	5.2%	5.3%
U of Texas Austin	9.7%	10.0%	10.3%	10.4%	10.4%

**Ladder Faculty: Percentage Minority
at UCSC and AAU Institutions without a Medical School
Fall 2003 - Fall 2007**



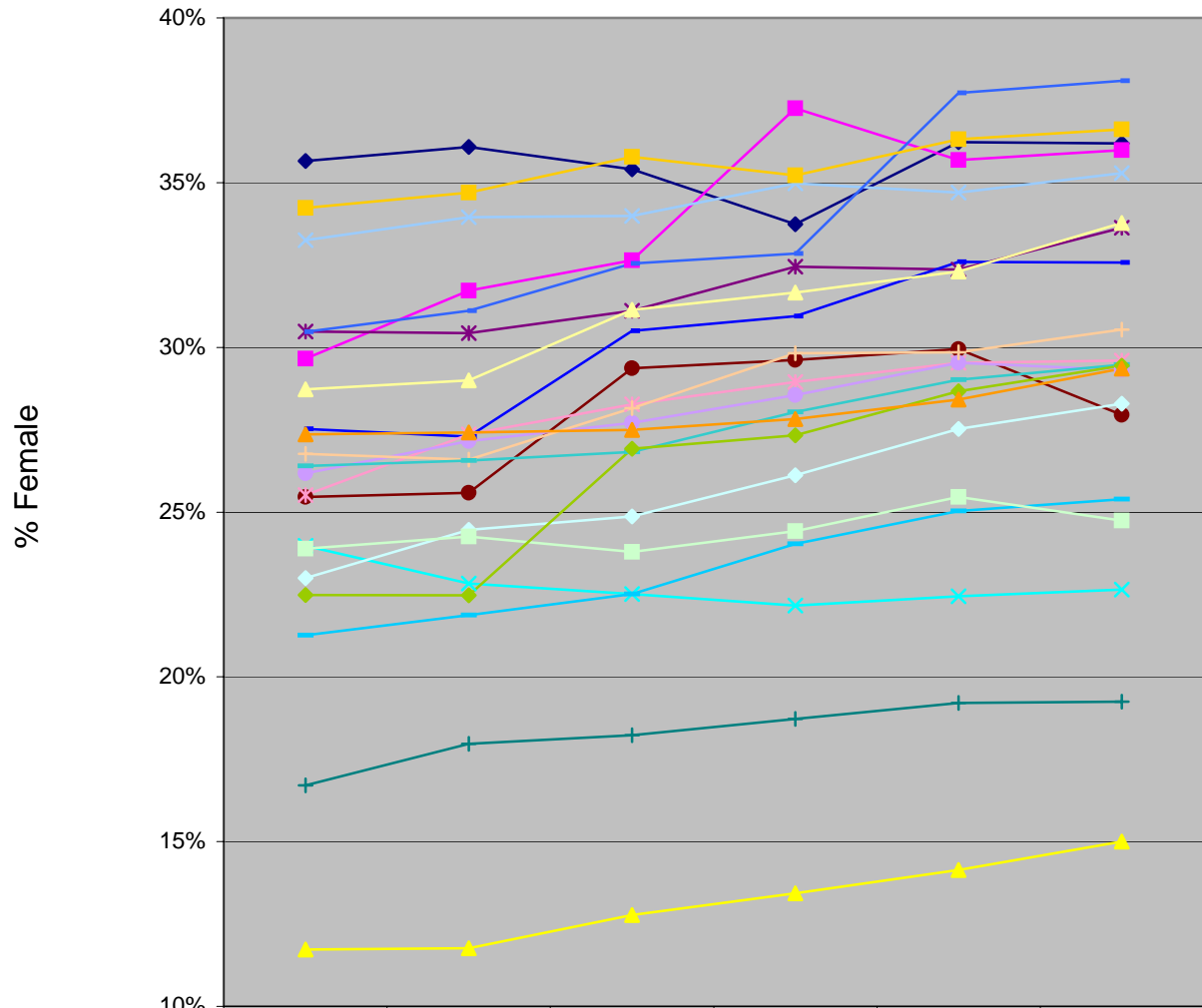
	Fall 2003	Fall 2004	Fall 2005	Fall 2006	Fall 2007	Fall 2008
UC Santa Cruz	23.5%	23.0%	23.3%		23.4%	24.1%
Brandeis	9.0%	10.5%	10.6%	10.3%	10.7%	
Cal Tech	9.5%		9.5%		12.7%	
Carnegie Mellon	12.7%	12.7%	14.7%	15.1%	15.0%	15.4%
Indiana U-Bloomington	12.8%	14.2%	14.9%	15.0%	15.5%	16.0%
Iowa State	14.0%	14.0%	18.2%	17.5%	17.3%	18.4%
MIT	13.5%	13.3%	12.9%	14.1%	14.1%	
Pennsylvania State	14.9%	14.9%	15.1%	15.0%	14.5%	14.4%
Princeton	12.6%	12.2%	13.0%	13.2%	14.8%	14.8%
Purdue Main	13.3%	15.1%	15.8%	17.1%	18.0%	18.7%
Rice	11.8%		12.6%	13.4%	14.9%	16.2%
Rutgers N Brunswick	14.5%	15.2%	16.0%	16.8%	18.0%	18.6%
Syracuse U	16.4%	17.1%	17.2%	18.7%	19.4%	19.0%
UC Berkeley	16.2%	17.6%	18.0%		18.7%	19.2%
UC Santa Barbara	17.3%	17.4%	18.0%		17.0%	17.9%
U of Colorado Boulder	14.4%	14.5%	15.3%	15.6%	14.9%	
U of Kansas	12.6%	12.3%	12.5%	13.3%	15.3%	15.8%
U of MD College Park	17.2%	16.5%	17.2%	18.6%	19.0%	19.8%
U of Nebraska Lincoln	10.7%	11.4%	12.2%	12.2%	12.5%	13.1%
U of Oregon	9.7%		10.9%	11.4%	11.7%	11.5%
U of Texas Austin	14.9%	10.1%	10.4%	11.1%	11.4%	11.8%

**Ladder Faculty: Percentage Underrepresented
at UCSC and AAU Institutions without a Medical School
Fall 2003 - Fall 2008**



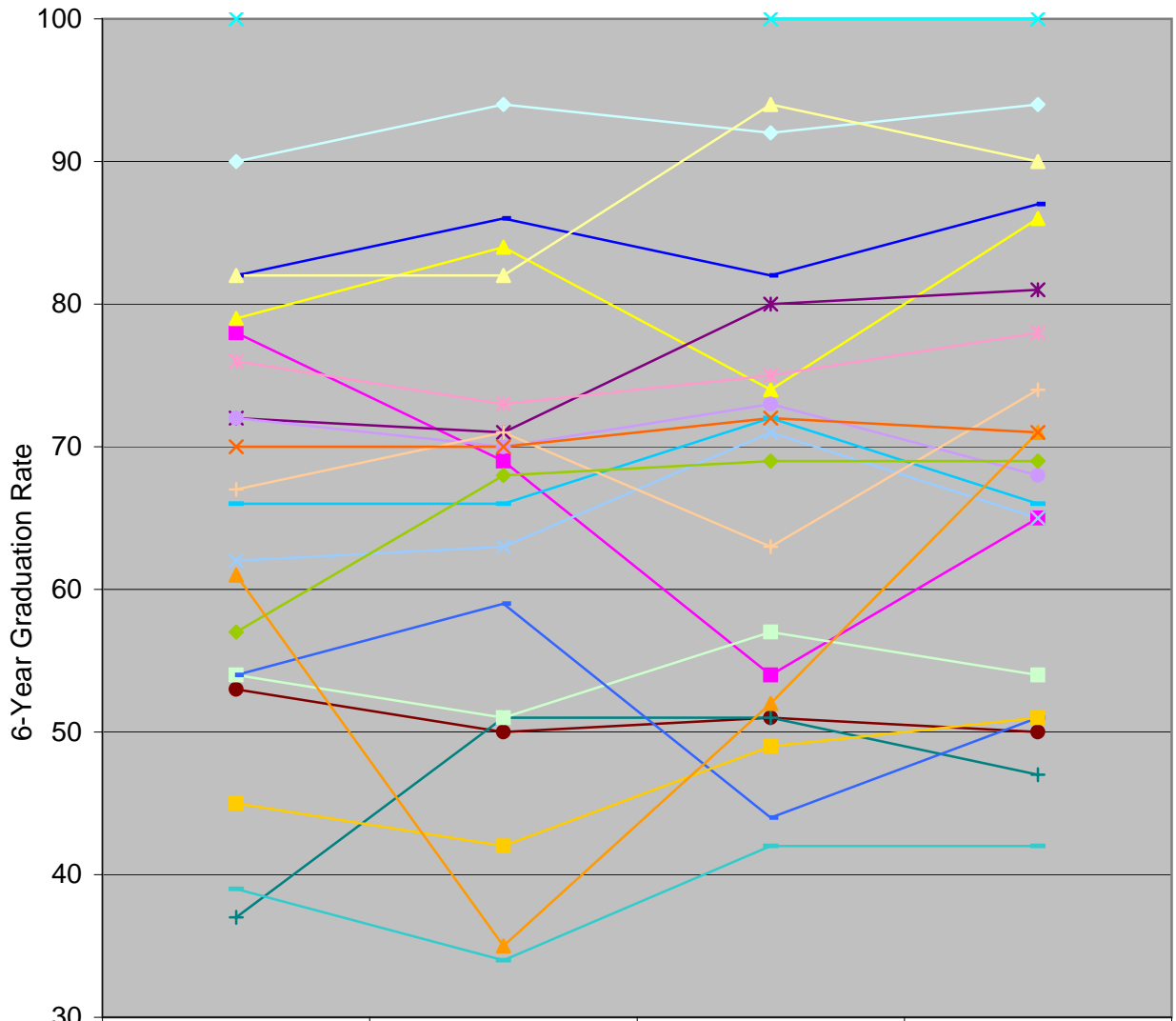
	Fall 2003	Fall 2004	Fall 2005	Fall 2006	Fall 2007	Fall 2008
UC Santa Cruz	12.0%	12.1%	12.5%		11.1%	11.4%
Brandeis	3.8%	3.7%	3.4%	3.4%	4.1%	
Cal Tech	1.1%		1.1%		2.8%	
Carnegie Mellon	4.9%	4.9%	5.4%	5.3%	5.1%	5.2%
Indiana U-Bloomington	6.7%	7.6%	7.8%	8.0%	8.0%	7.9%
Iowa State	3.9%	3.9%	4.6%	4.8%	4.4%	4.4%
MIT	4.3%	4.4%	4.3%	4.5%	4.0%	
Pennsylvania State	5.5%	5.5%	6.2%	5.8%	5.4%	5.4%
Princeton	4.8%	4.7%	4.8%	4.6%	5.6%	5.8%
Purdue Main	4.1%	4.7%	5.0%	4.8%	5.0%	5.3%
Rice	5.0%		5.3%	5.8%	5.7%	6.9%
Rutgers N Brunswick	5.4%	5.5%	5.5%	5.8%	6.1%	6.4%
Syracuse U	8.6%	8.9%	9.4%	10.2%	10.7%	10.4%
UC Berkeley	5.6%	6.2%	6.3%		7.1%	7.4%
UC Santa Barbara	8.4%	8.3%	8.6%		7.9%	8.6%
U of Colorado Boulder	7.3%	6.7%	6.9%	7.1%	6.6%	
U of Kansas	6.8%	6.6%	6.2%	6.1%	5.8%	6.2%
U of MD College Park	7.9%	7.5%	7.9%	8.5%	8.1%	8.1%
U of Nebraska Lincoln	4.9%	5.0%	5.1%	5.2%	5.0%	5.1%
U of Oregon	4.2%		4.8%	6.0%	5.8%	5.4%
U of Texas Austin	8.3%	7.1%	7.7%	8.1%	8.2%	8.4%

Ladder Faculty: Percentage Women for UCSC and AAU Institutions without a Medical School Fall 2003 - Fall 2008



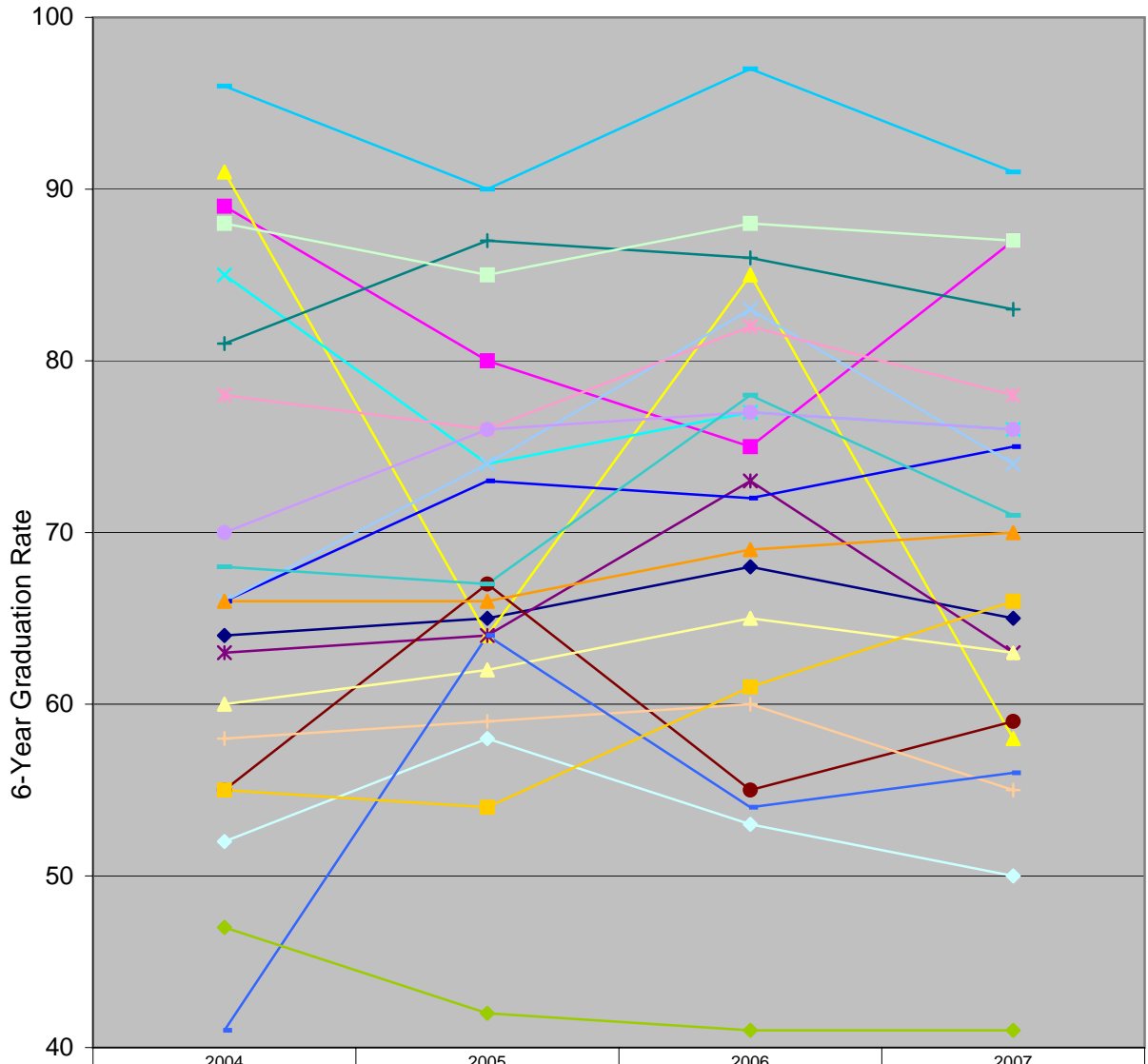
	2003	2004	2005	2006	2007	2008
UC Santa Cruz	35.7%	36.1%	35.4%	33.7%	36.2%	36.2%
Brandeis	29.7%	31.7%	32.6%	37.3%	35.7%	36.0%
Cal Tech	11.7%	11.8%	12.8%	13.4%	14.1%	15.0%
Carnegie Mellon	24.0%	22.8%	22.5%	22.2%	22.4%	22.7%
Indiana U-Bloomington	30.5%	30.4%	31.1%	32.4%	32.4%	33.6%
Iowa State	25.5%	25.6%	29.4%	29.6%	29.9%	28.0%
MIT	16.7%	18.0%	18.2%	18.7%	19.2%	19.3%
Pennsylvania State	27.5%	27.3%	30.5%	30.9%	32.6%	32.6%
Princeton	21.3%	21.9%	22.5%	24.0%	25.0%	25.4%
Purdue Main	23.0%	24.5%	24.9%	26.1%	27.5%	28.3%
Rice	23.9%	24.3%	23.8%	24.4%	25.5%	24.7%
Rutgers N Brunswick	28.7%	29.0%	31.1%	31.7%	32.3%	33.8%
Syracuse U	33.3%	34.0%	34.0%	35.0%	34.7%	35.3%
UC Berkeley	25.5%	27.4%	28.3%	28.9%	29.5%	29.6%
UC Santa Barbara	26.2%	27.2%	27.7%	28.6%	29.5%	29.3%
U of Colorado Boulder	26.8%	26.6%	28.2%	29.8%	29.9%	30.5%
U of Kansas	30.5%	31.1%	32.5%	32.8%	37.7%	38.1%
U of MD College Park	26.4%	26.6%	26.8%	28.0%	29.0%	29.5%
U of Nebraska Lincoln	22.5%	22.5%	26.9%	27.3%	28.7%	29.4%
U of Oregon	34.2%	34.7%	35.8%	35.2%	36.3%	36.6%
U of Texas Austin	27.4%	27.4%	27.5%	27.8%	28.4%	29.4%

**6-Year Graduation Rates for Black Students
at UCSC and AAU Institutions without a Medical School 2004-2007**



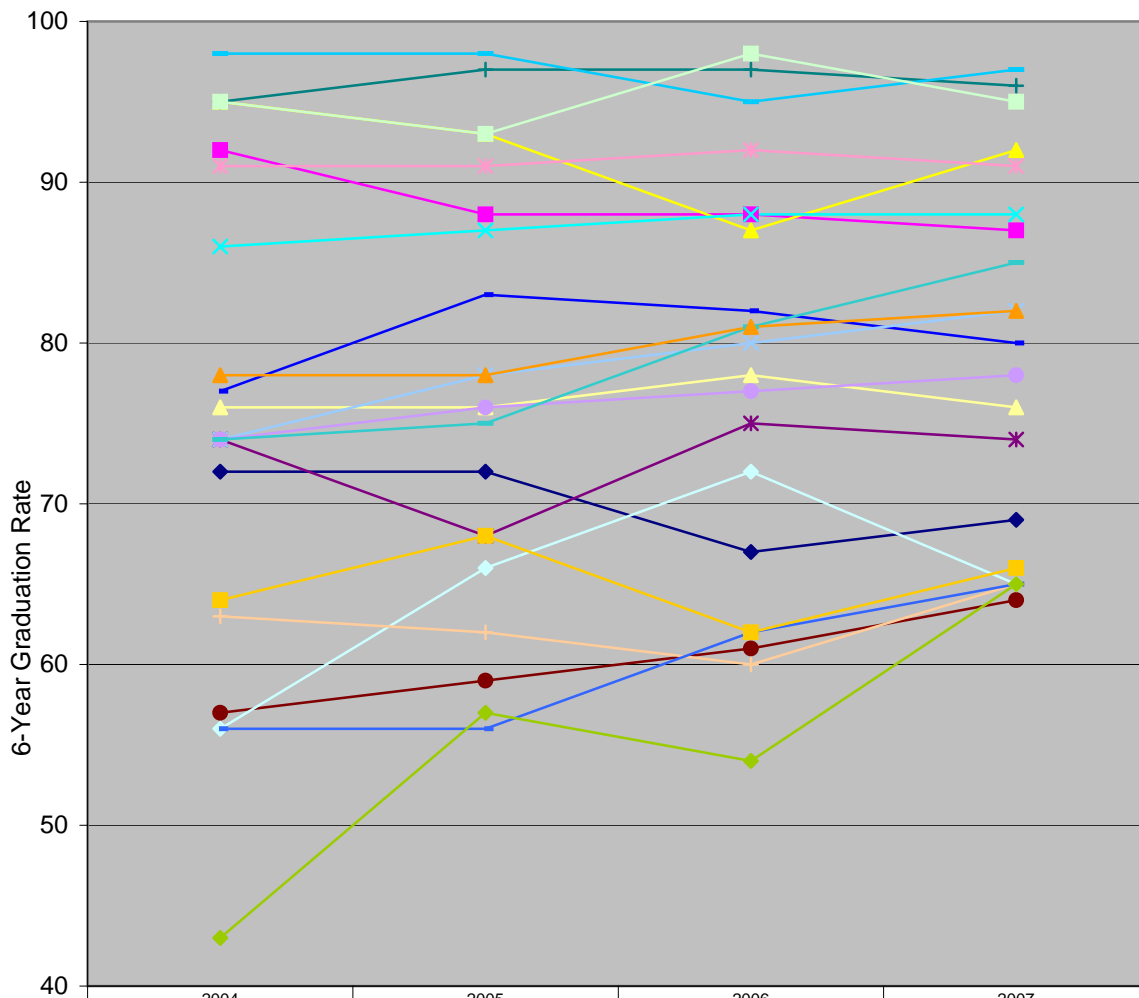
	2004	2005	2006	2007
UC Santa Cruz	78	69	54	65
Brandeis	79	84	74	86
Cal Tech	100	100	100	100
Carnegie Mellon	72	71	80	81
Indiana U Bloomington	53	50	51	50
Iowa State	37	51	51	47
MIT	82	86	82	87
Pennsylvania State	66	66	72	66
Princeton	90	94	92	94
Purdue Main	54	51	57	54
Rice	82	82	94	90
Rutgers N Brunswick	62	63	71	65
Syracuse U	76	73	75	78
UC Berkeley	72	70	73	68
UC Santa Barbara	67	71	63	74
U of Colorado Boulder	54	59	44	51
U of Kansas	39	34	42	42
U of MD College Park	57	68	69	69
U of Nebraska Lincoln	45	42	49	51
U of Oregon	61	35	52	71
U of Texas Austin	70	70	72	71

6-Year Graduation Rates for Hispanic Students at UCSC and AAU Institutions without a Medical School 2004-2007



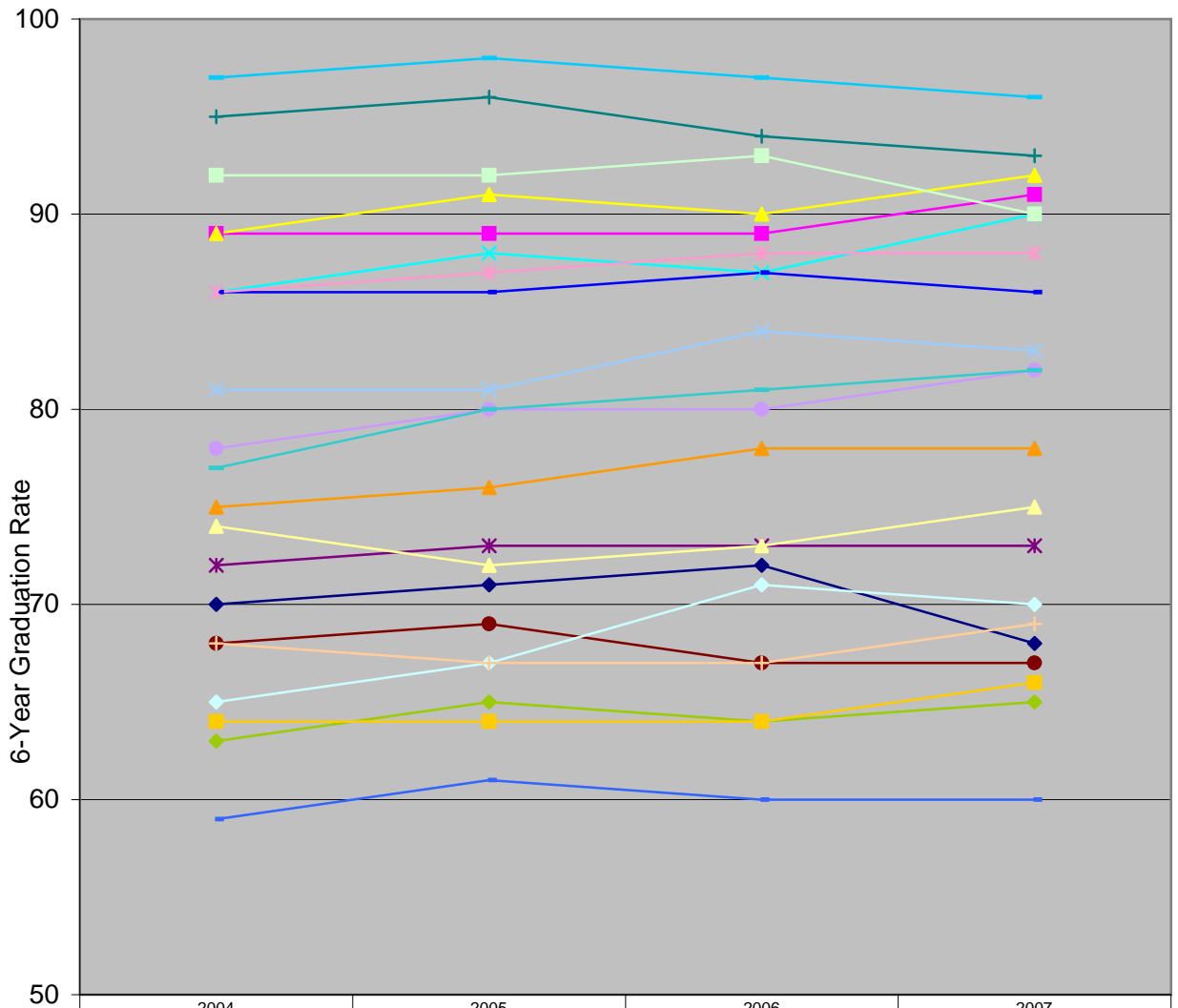
	2004	2005	2006	2007
UC Santa Cruz	64	65	68	65
Brandeis	89	80	75	87
Cal Tech	91	64	85	58
Carnegie Mellon	85	74	77	76
Indiana U Bloomington	63	64	73	63
Iowa State	55	67	55	59
MIT	81	87	86	83
Pennsylvania State	66	73	72	75
Princeton	96	90	97	91
Purdue Main	52	58	53	50
Rice	88	85	88	87
Rutgers N Brunswick	60	62	65	63
Syracuse U	66	74	83	74
UC Berkeley	78	76	82	78
UC Santa Barbara	70	76	77	76
U of Colorado Boulder	58	59	60	55
U of Kansas	41	64	54	56
U of MD College Park	68	67	78	71
U of Nebraska Lincoln	47	42	41	41
U of Oregon	55	54	61	66
U of Texas Austin	66	66	69	70

**6-Year Graduation Rates for Asian Students
at UCSC and AAU Institutions without a Medical School 2004-2007**



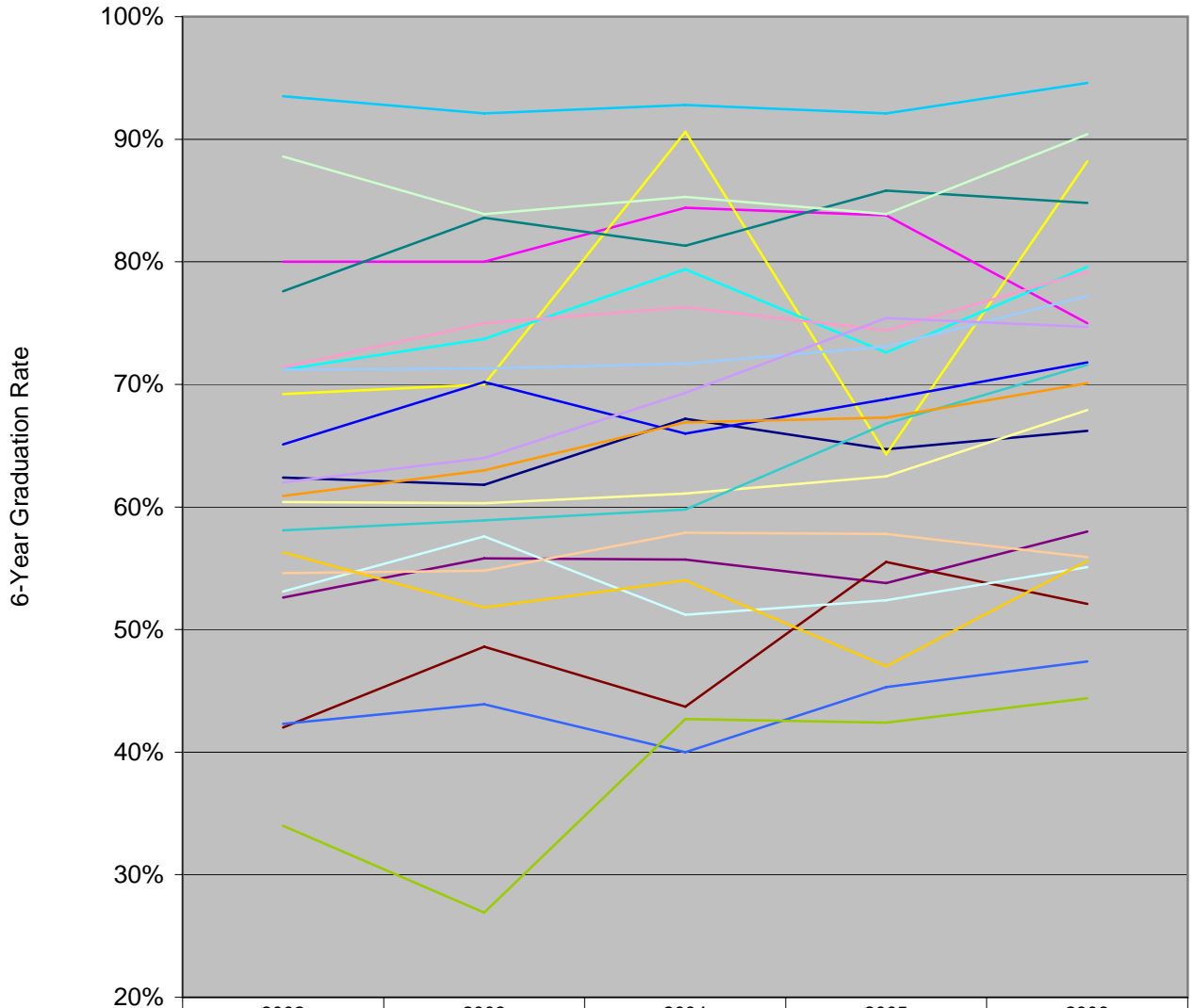
	2004	2005	2006	2007
UC Santa Cruz	72	72	67	69
Brandeis	92	88	88	87
Cal Tech	95	93	87	92
Carnegie Mellon	86	87	88	88
Indiana U Bloomington	74	68	75	74
Iowa State	57	59	61	64
MIT	95	97	97	96
Pennsylvania State	77	83	82	80
Princeton	98	98	95	97
Purdue Main	56	66	72	65
Rice	95	93	98	95
Rutgers N Brunswick	76	76	78	76
Syracuse U	74	78	80	82
UC Berkeley	91	91	92	91
UC Santa Barbara	74	76	77	78
U of Colorado Boulder	63	62	60	65
U of Kansas	56	56	62	65
U of MD College Park	74	75	81	85
U of Nebraska Lincoln	43	57	54	65
U of Oregon	64	68	62	66
U of Texas Austin	78	78	81	82

**6-Year Graduation Rates for White Students
at UCSC and AAU Institutions without a Medical School 2004-2007**



	2004	2005	2006	2007
UC Santa Cruz	70	71	72	68
Brandeis	89	89	89	91
Cal Tech	89	91	90	92
Carnegie Mellon	86	88	87	90
Indiana U Bloomington	72	73	73	73
Iowa State	68	69	67	67
MIT	95	96	94	93
Pennsylvania State	86	86	87	86
Princeton	97	98	97	96
Purdue Main	65	67	71	70
Rice	92	92	93	90
Rutgers N Brunswick	74	72	73	75
Syracuse U	81	81	84	83
UC Berkeley	86	87	88	88
UC Santa Barbara	78	80	80	82
U of Colorado Boulder	68	67	67	69
U of Kansas	59	61	60	60
U of MD College Park	77	80	81	82
U of Nebraska Lincoln	63	65	64	65
U of Oregon	64	64	64	66
U of Texas Austin	75	76	78	78

Six-Year Graduation Rates for Underrepresented Students at UCSC and AAU Institutions without a Medical School 2002-2006



	2002	2003	2004	2005	2006
UC Santa Cruz	62%	62%	67%	65%	66%
Brandeis	80%	80%	84%	84%	75%
Cal Tech	69%	70%	91%	64%	88%
Carnegie Mellon	71%	74%	79%	73%	80%
Indiana U-Bloomington	53%	56%	56%	54%	58%
Iowa State	42%	49%	44%	56%	52%
MIT	78%	84%	81%	86%	85%
Pennsylvania State	65%	70%	66%	69%	72%
Princeton	94%	92%	93%	92%	95%
Purdue Main	53%	58%	51%	52%	55%
Rice	89%	84%	85%	84%	90%
Rutgers N Brunswick	60%	60%	61%	63%	68%
Syracuse U	71%	71%	72%	73%	77%
UC Berkeley	71%	75%	76%	74%	79%
UC Santa Barbara	62%	64%	69%	75%	75%
U of Colorado Boulder	55%	55%	58%	58%	56%
U of Kansas	42%	44%	40%	45%	47%
U of MD College Park	58%	59%	60%	67%	72%
U of Nebraska Lincoln	34%	27%	43%	42%	44%
U of Oregon	56%	52%	54%	47%	56%
U of Texas Austin	61%	63%	67%	67%	70%

TOTAL & FEDERAL RESEARCH EXPENDITURES

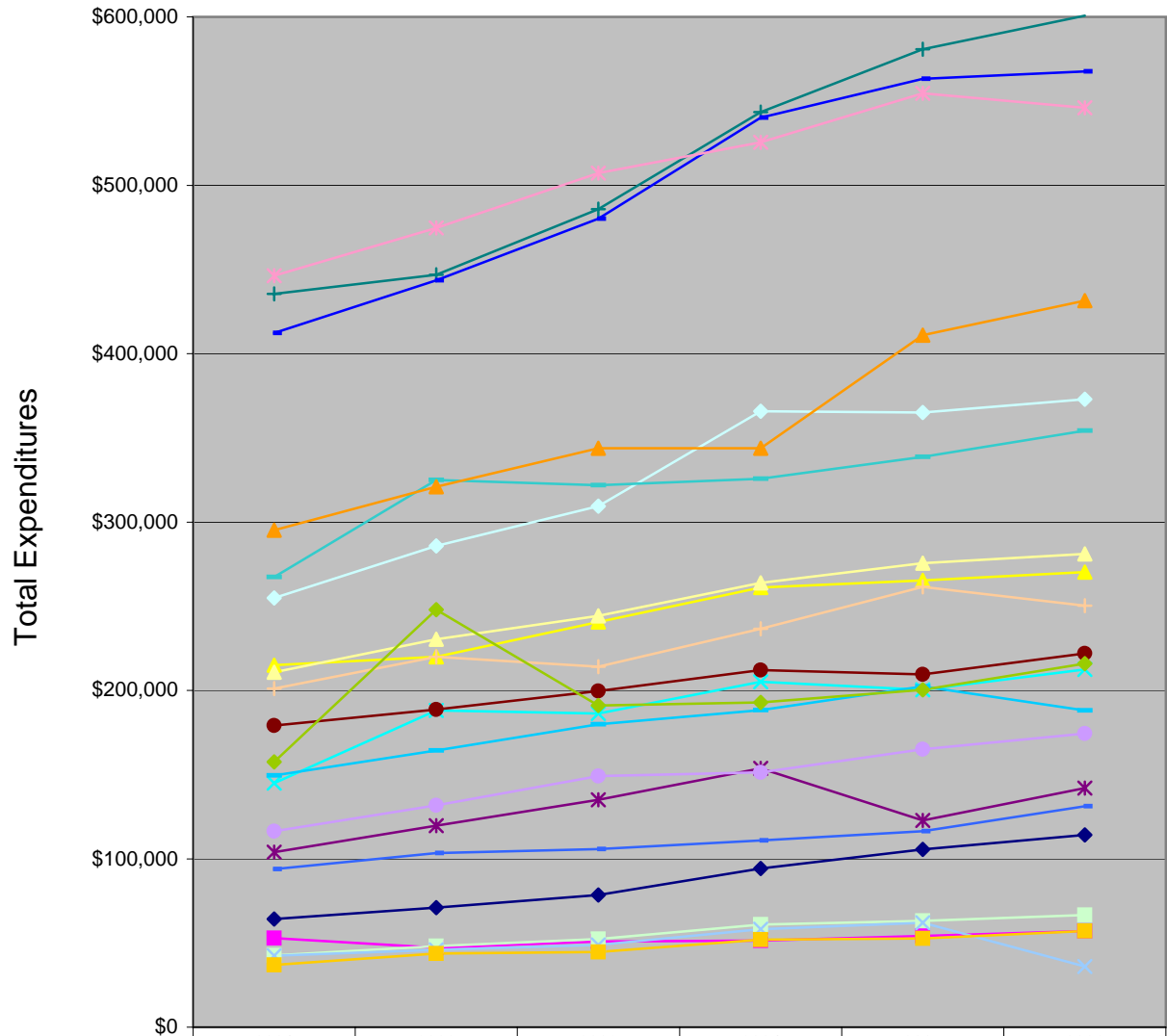
UCSC and AAU Institutions without a Medical School Total / Federal Research Expenditures, Expenditures per Faculty

	Fall 2005 FT Faculty	FY 2006 Total Research (\$ x 1000)	Total Reseach per Faculty (\$ x 1,000)	FY 2006 Federal Research (\$ x 1000)	Federal Reseach per Faculty (\$ x 1,000)	Federal % of Total
UC Santa Cruz	534	\$114,126	\$214	\$66,390	\$124	58%
Brandeis	343	\$57,017	\$166	\$41,184	\$120	72%
Cal Tech	311	\$270,269	\$869	\$248,591	\$799	92%
Carnegie Mellon	810	\$212,506	\$262	\$185,389	\$229	87%
Indiana U-Bloomington	1,589	\$142,002	\$89	\$68,254	\$43	48%
Iowa State	1,115	\$221,998	\$199	\$104,553	\$94	47%
MIT	1,117	\$600,748	\$538	\$476,362	\$426	79%
Pennsylvania State	2260	\$567,549	\$251	\$320,258	\$142	56%
Princeton	807	\$188,165	\$233	\$117,845	\$146	63%
Purdue Main	2,183	\$372,958	\$171	\$157,438	\$72	42%
Rice	567	\$66,564	\$117	\$53,880	\$95	81%
Rutgers N Brunswick	1,592	\$280,994	\$177	\$118,732	\$75	42%
Syracuse U	891	\$36,100	\$41	\$25,299	\$28	70%
UC Berkeley	1,434	\$546,035	\$381	\$261,718	\$183	48%
UC Santa Barbara	891	\$174,429	\$196	\$106,169	\$119	61%
U of Colorado Boulder	1,115	\$250,255	\$224	\$223,666	\$201	89%
U of Kansas	1,055	\$131,195	\$124	\$74,104	\$70	56%
U of MD College Park	1,523	\$354,244	\$233	\$209,764	\$138	59%
U of Nebraska Lincoln	1,129	\$215,850	\$191	\$80,731	\$72	37%
U of Oregon	734	\$57,153	\$78	\$46,583	\$63	82%
U of Texas Austin	2,450	\$431,398	\$176	\$273,147	\$111	63%
		2005-06		2005-06		

\$ x 1,000

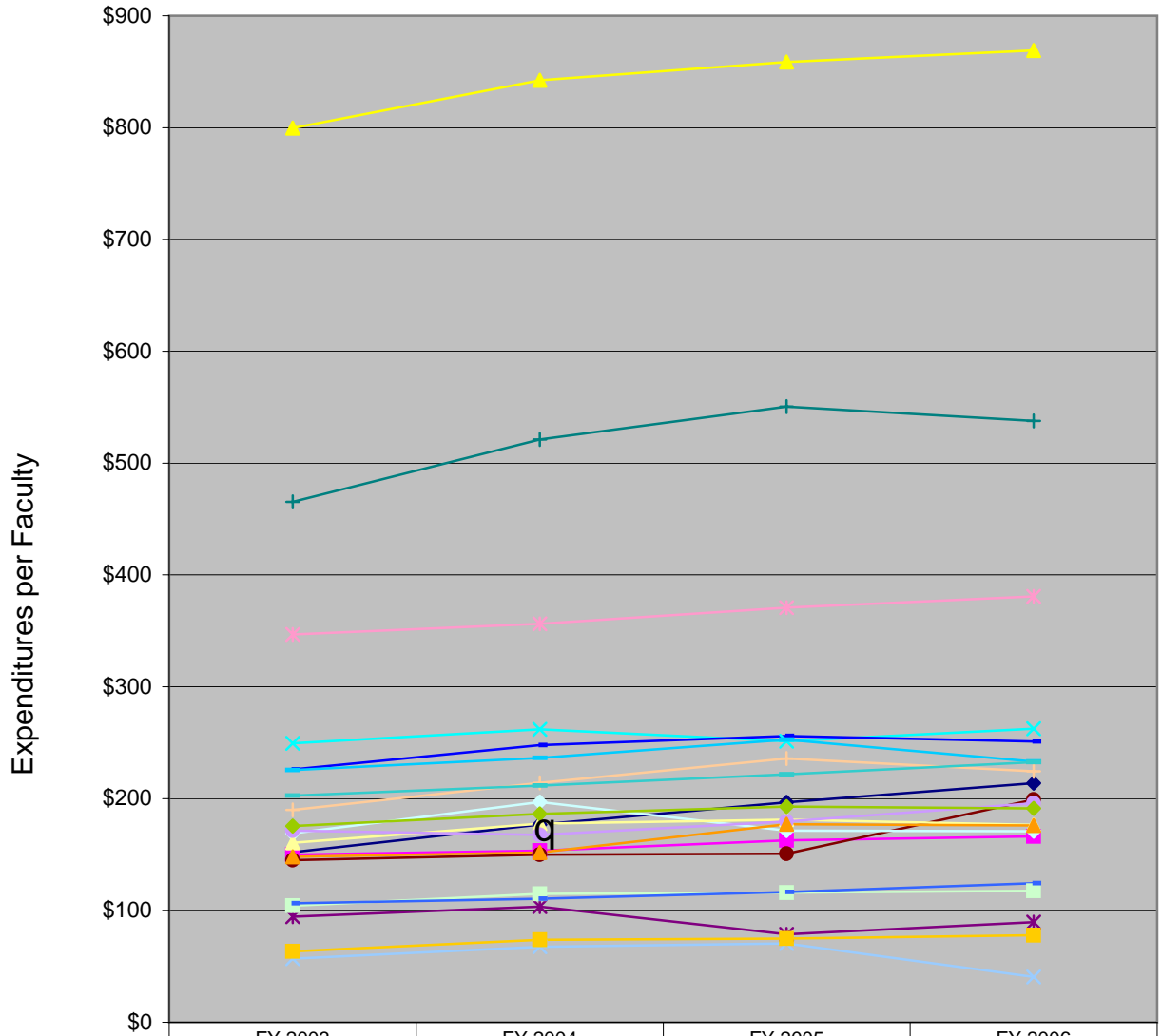
Source: CMUP and NSF for Expenditures, IPEDS for faculty

Total Research Expenditures for UCSC and AAU Institutions without a Medical School FY2001 - FY2006



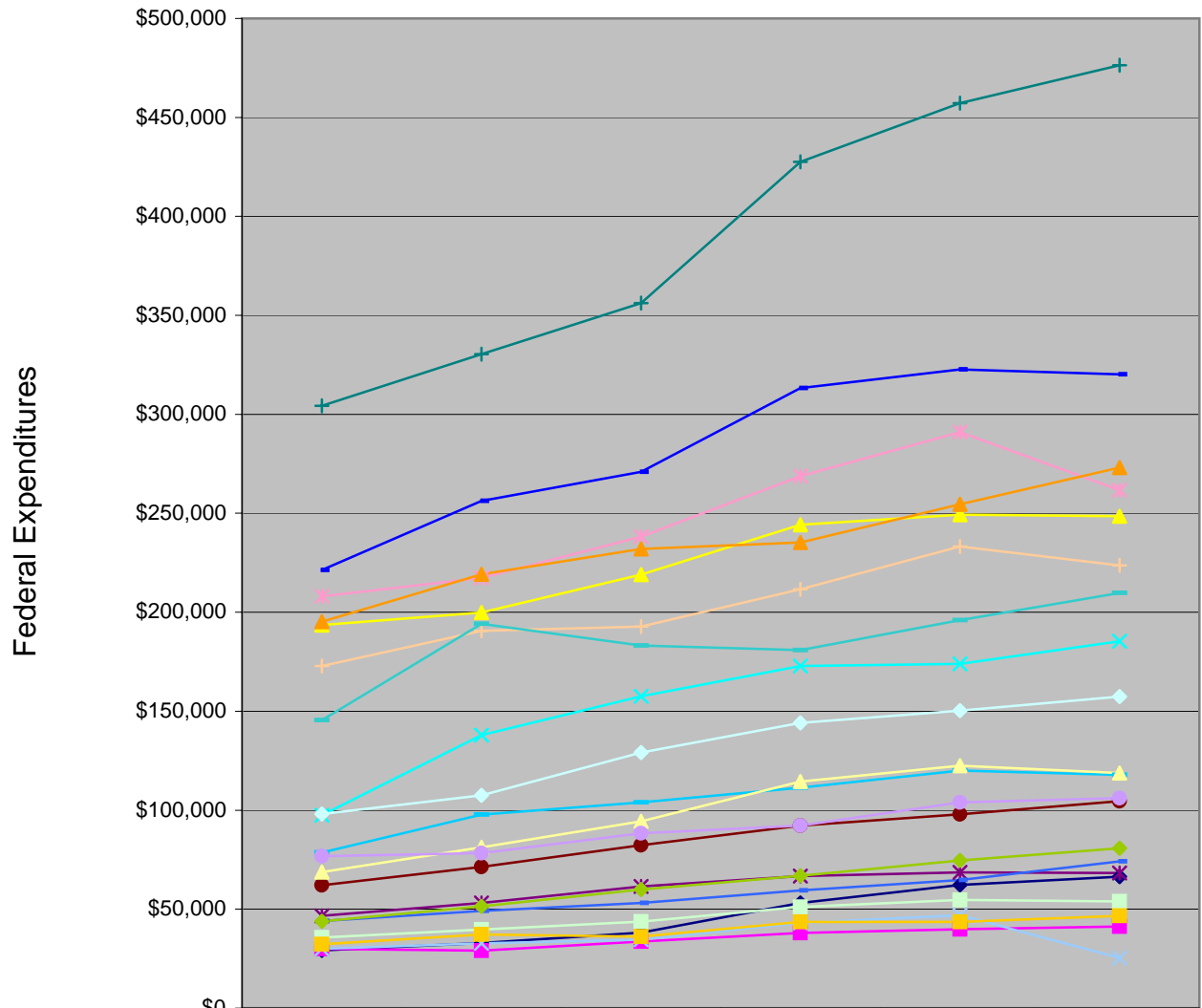
	2001	2002	2003	2004	2005	2006
UC Santa Cruz	64,253	70,967	78,448	94,297	105,617	114,126
Brandeis	52,818	47,122	50,841	51,498	54,136	57,017
Cal Tech	215,085	220,004	240,664	261,098	265,364	270,269
Carnegie Mellon	144,882	188,191	186,351	205,149	200,297	212,506
Indiana U-Bloomington	103,960	119,632	135,068	153,667	122,855	142,002
Iowa State	179,196	188,664	199,566	211,996	209,545	221,998
MIT	435,495	446,786	485,764	543,448	580,742	600,748
Pennsylvania State	412,259	443,465	480,084	540,125	563,188	567,549
Princeton	149,411	164,408	179,951	188,373	202,380	188,165
Purdue Main	254,917	285,778	309,476	365,779	364,986	372,958
Rice	42,675	48,169	52,367	60,872	63,102	66,564
Rutgers N Brunswick	210,746	230,358	244,373	263,915	275,483	280,994
Syracuse U	42,476	45,870	48,846	58,276	62,020	36,100
UC Berkeley	446,273	474,746	507,186	525,598	554,551	546,035
UC Santa Barbara	116,372	131,795	149,130	151,325	165,014	174,429
U of Colorado Boulder	201,010	219,900	214,013	236,666	261,429	250,255
U of Kansas	93,880	103,451	105,816	110,890	116,344	131,195
U of MD College Park	267,383	324,980	321,899	325,648	338,648	354,244
U of Nebraska Lincoln	157,520	247,948	191,009	192,846	200,287	215,850
U of Oregon	36,881	43,723	44,604	51,956	52,657	57,153
U of Texas Austin	295,104	320,966	343,854	343,886	410,981	431,398

Total Research Expenditures per Faculty \$ X \$1,000



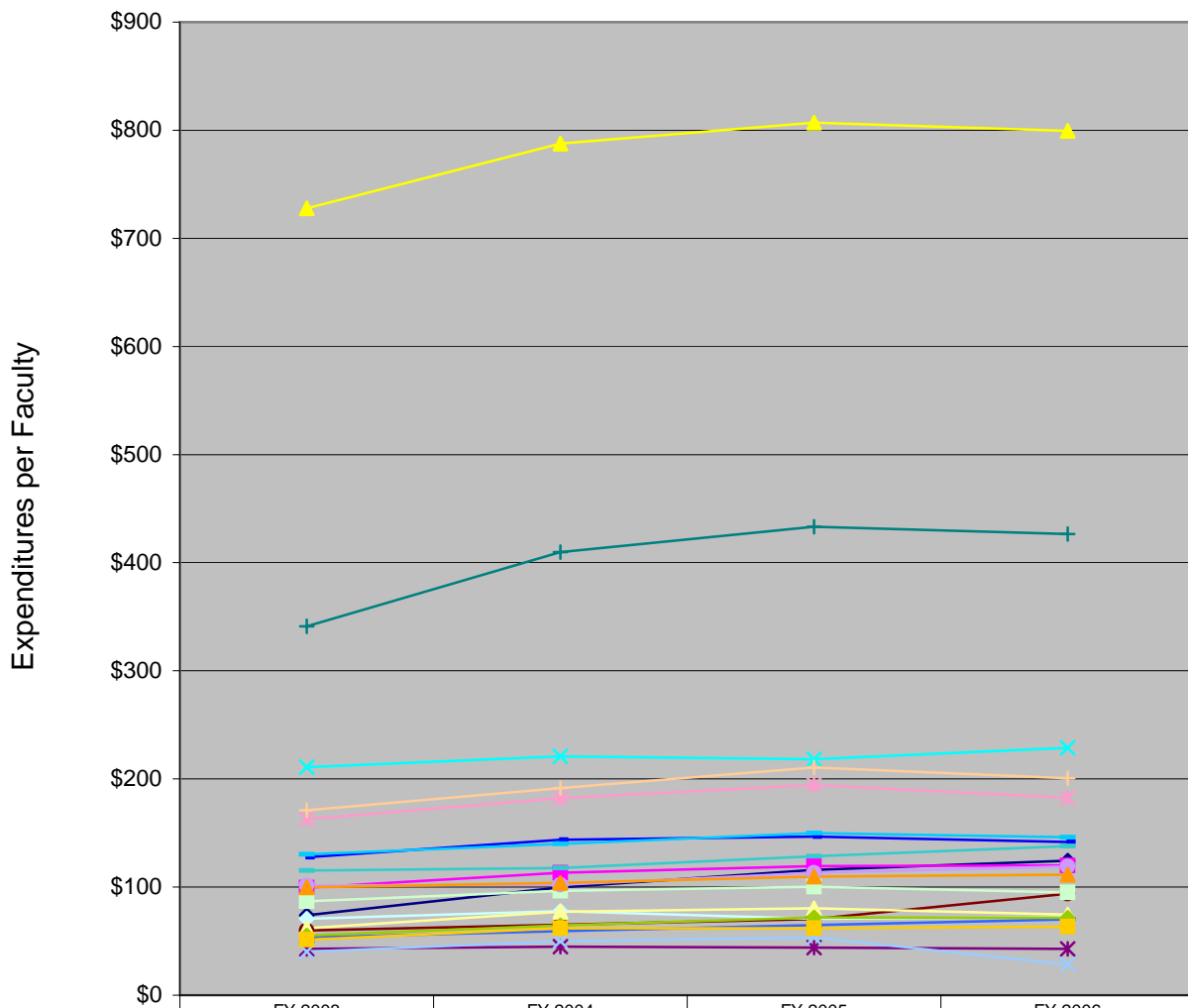
	FY 2003	FY 2004	FY 2005	FY 2006
UC Santa Cruz	\$152	\$177	\$197	\$214
Brandeis	\$150	\$153	\$163	\$166
Cal Tech	\$800	\$842	\$859	\$869
Carnegie Mellon	\$249	\$262	\$251	\$262
Indiana U-Bloomington	\$94	\$103	\$79	\$89
Iowa State	\$145	\$150	\$151	\$199
MIT	\$465	\$521	\$550	\$538
Pennsylvania State	\$226	\$248	\$256	\$251
Princeton	\$226	\$236	\$253	\$233
Purdue Main	\$169	\$197	\$171	\$171
Rice	\$104	\$115	\$116	\$117
Rutgers N Brunswick	\$161	\$178	\$181	\$177
Syracuse U	\$57	\$67	\$71	\$41
UC Berkeley	\$347	\$356	\$371	\$381
UC Santa Barbara	\$171	\$168	\$180	\$196
U of Colorado Boulder	\$190	\$214	\$236	\$224
U of Kansas	\$106	\$110	\$116	\$124
U of MD College Park	\$203	\$212	\$222	\$233
U of Nebraska Lincoln	\$176	\$186	\$193	\$191
U of Oregon	\$63	\$74	\$75	\$78
U of Texas Austin	\$148	\$152	\$177	\$176

Federal Research Expenditures for UCSC and AAU Institutions without a Medical School FY2001 - FY2006



	FY2001	FY2002	FY2003	FY2004	FY2005	FY2006
UC Santa Cruz	29,201	32,901	38,213	53,196	62,301	66,390
Brandeis	30,031	29,006	33,722	38,041	39,788	41,184
Cal Tech	193,554	199,944	219,097	244,187	249,371	248,591
Carnegie Mellon	97,463	137,967	157,583	172,858	173,902	185,389
Indiana U-Bloomington	46,712	53,104	61,450	66,765	68,611	68,254
Iowa State	62,024	71,419	82,297	92,235	98,005	104,553
MIT	304,319	330,409	356,206	427,552	457,235	476,362
Pennsylvania State	221,356	256,235	270,985	313,196	322,712	320,258
Princeton	78,620	97,724	104,011	111,435	120,042	117,845
Purdue Main	98,151	107,477	129,199	144,090	150,351	157,438
Rice	35,682	39,739	43,706	51,157	54,735	53,880
Rutgers N Brunswick	68,669	81,172	94,393	114,503	122,472	118,732
Syracuse U	30,036	32,704	34,559	43,162	46,945	25,299
UC Berkeley	208,080	217,297	238,206	268,830	290,960	261,718
UC Santa Barbara	76,828	78,370	88,422	92,248	103,955	106,169
U of Colorado Boulder	172,840	190,661	192,750	211,643	233,316	223,666
U of Kansas	43,951	49,184	53,072	59,521	64,689	74,104
U of MD College Park	145,515	194,095	183,206	180,943	196,008	209,764
U of Nebraska Lincoln	43,877	51,405	60,005	66,933	74,660	80,731
U of Oregon	32,232	37,177	36,127	43,634	43,564	46,583
U of Texas Austin	195,184	219,158	231,996	235,281	254,529	273,147

Federal Research Expenditures per Faculty (\$ X \$1,000)



	FY 2003	FY 2004	FY 2005	FY 2006
UC Santa Cruz	\$74	\$100	\$116	\$124
Brandeis	\$99	\$113	\$119	\$120
Cal Tech	\$728	\$788	\$807	\$799
Carnegie Mellon	\$211	\$221	\$218	\$229
Indiana U-Bloomington	\$43	\$45	\$44	\$43
Iowa State	\$60	\$65	\$70	\$94
MIT	\$341	\$410	\$433	\$426
Pennsylvania State	\$128	\$144	\$147	\$142
Princeton	\$130	\$140	\$150	\$146
Purdue Main	\$71	\$78	\$71	\$72
Rice	\$87	\$97	\$100	\$95
Rutgers N Brunswick	\$62	\$77	\$81	\$75
Syracuse U	\$40	\$50	\$53	\$28
UC Berkeley	\$163	\$182	\$194	\$183
UC Santa Barbara	\$102	\$102	\$113	\$119
U of Colorado Boulder	\$171	\$192	\$211	\$201
U of Kansas	\$53	\$59	\$65	\$70
U of MD College Park	\$115	\$118	\$128	\$138
U of Nebraska Lincoln	\$55	\$65	\$72	\$72
U of Oregon	\$51	\$62	\$62	\$63
U of Texas Austin	\$100	\$104	\$110	\$111

PRIVATE SUPPORT

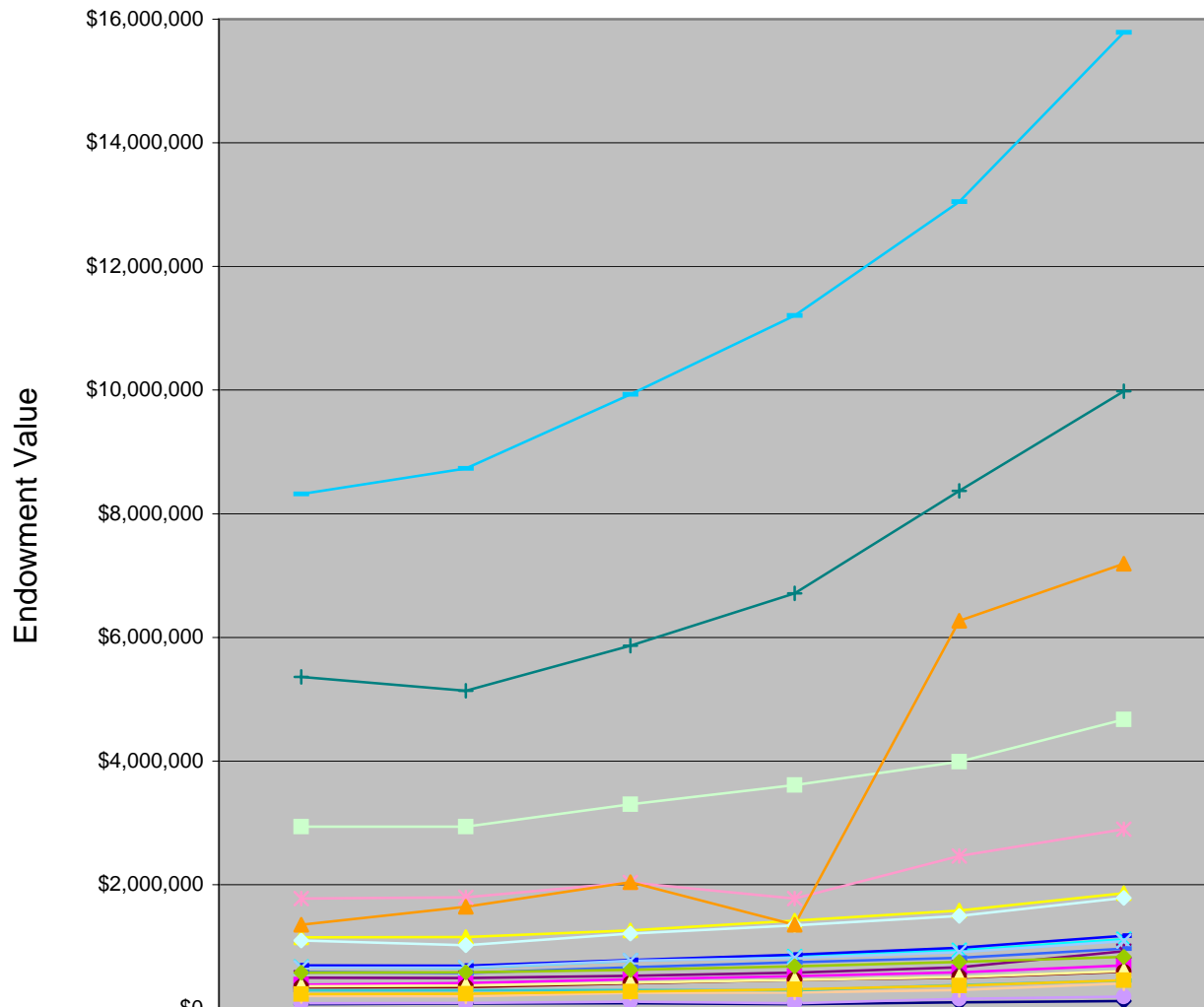
UCSC & AAU Institutions without a Medical School Endowment, Annual Giving, Alumni Giving Rate

	Endowment* FY2007	Annual Giving* FY2007	Alum Giving Rate FY2008	Alumni Giving* FY2008
UC Santa Cruz	\$117,774	\$29,120	9.2%	\$1,073
Brandeis	\$691,370	\$86,297	26.6%	\$6,714
Cal Tech	\$1,860,052	\$183,257	25.8%	\$11,570
Carnegie Mellon	\$1,115,740	\$74,717	17.9%	\$21,733
Indiana U-Bloomington	\$924,420	\$169,639	13.3%	\$114,974
Iowa State	\$592,368	\$69,954	12.2%	\$28,722
MIT	\$9,980,410	\$329,158	25.1%	\$110,535
Pennsylvania State	\$1,173,420	\$129,829	17.5%	\$61,273
Princeton	\$15,787,200	\$230,572	48.5%	\$136,668
Purdue Main	\$1,786,592	\$200,683	16.7%	\$57,983
Rice	\$4,669,544	\$67,768	27.2%	\$34,122
Rutgers N Brunswick	\$601,849	\$88,336	9.0%	\$32,808
Syracuse U	\$1,086,143	\$68,771	9.1%	\$26,910
UC Berkeley	\$2,894,932	\$242,602	8.9%	\$70,450
UC Santa Barbara	\$190,038	\$51,259	5.7%	\$6,760
U of Colorado Boulder	\$404,648	\$45,990	6.2%	\$17,511
U of Kansas	\$966,182	\$78,983	20.3%	\$46,321
U of MD College Park	\$446,648	\$85,575	8.7%	\$34,692
U of Nebraska Lincoln	\$830,160	\$61,473	7.5%	\$78,862
U of Oregon	\$455,583	\$101,251	10.9%	\$23,706
U of Texas Austin	\$7,190,136	\$228,759	13.8%	\$67,886

* Dollars x 1,000

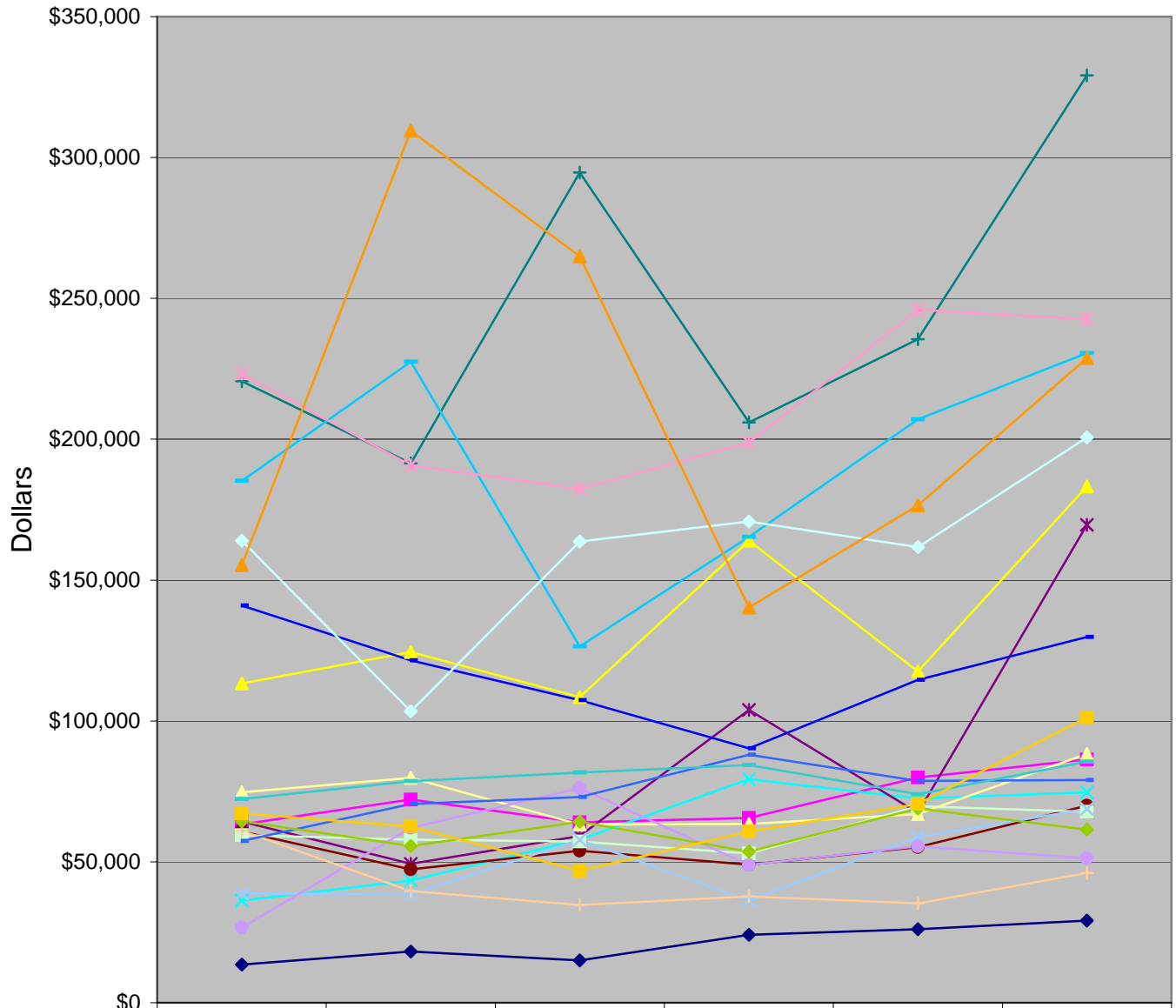
Source: CMUP, VSE

Endowments of UCSC and AAU Institutions without a Medical School 2002 - 2007



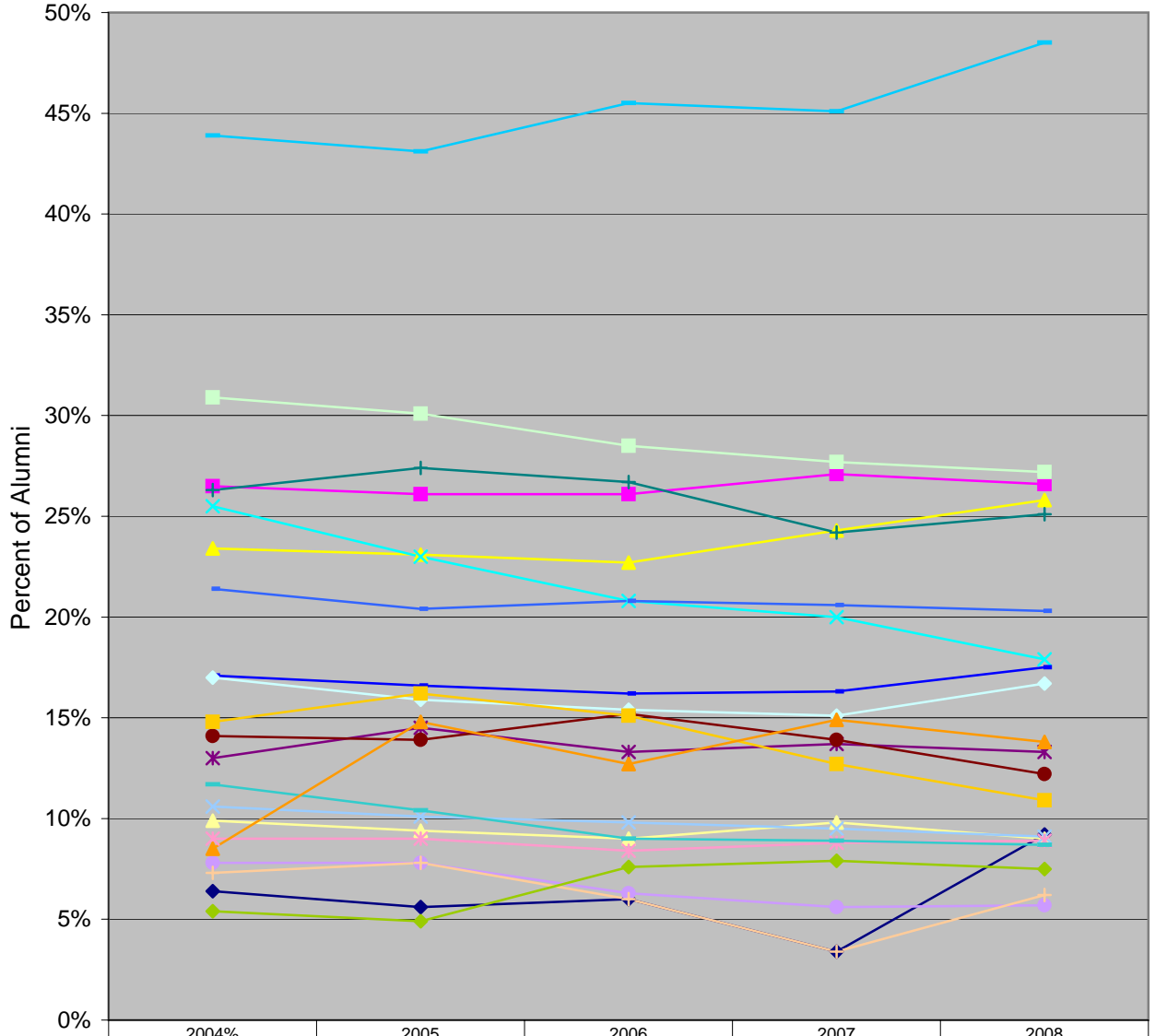
	2002	2003	2004	2005	2006	2007
UC Santa Cruz	68,762	74,643	80,068	68,762	97,450	117,774
Brandeis	384,335	407,824	467,727	519,538	579,654	691,370
Cal Tech	1,145,551	1,151,148	1,261,122	1,417,931	1,580,922	1,860,052
Carnegie Mellon	667,807	654,678	768,990	837,459	939,581	1,115,740
Indiana U-Bloomington	497,115	489,355	526,608	575,899	663,603	924,420
Iowa State	335,927	339,330	400,621	456,627	496,018	592,368
MIT	5,359,423	5,133,613	5,865,212	6,712,436	8,368,066	9,980,410
Pennsylvania State	695,128	689,567	779,174	866,788	978,611	1,173,420
Princeton	8,319,600	8,730,100	9,928,200	11,206,500	13,044,900	15,787,200
Purdue Main	1,098,939	1,017,667	1,207,131	1,340,536	1,493,554	1,786,592
Rice	2,939,804	2,937,649	3,302,455	3,611,127	3,986,664	4,669,544
Rutgers N Brunswick	355,799	366,324	413,898	456,589	505,869	601,849
Syracuse U	657,769	656,893	770,167	818,258	908,371	1,086,143
UC Berkeley	1,774,200	1,793,647	2,037,297	1,774,200	2,464,109	2,894,932
UC Santa Barbara	80,830	88,346	106,340	80,830	151,836	190,038
U of Colorado Boulder	196,852	193,468	249,897	256,186	295,153	404,648
U of Kansas	585,749	572,938	662,419	744,856	818,506	966,182
U of MD College Park	290,013	289,615	295,816	290,013	375,992	446,648
U of Nebraska Lincoln	576,798	581,789	623,910	677,489	749,813	830,160
U of Oregon	227,990	234,823	267,903	304,024	365,859	455,583
U of Texas Austin	1,351,158	1,640,724	2,038,938	1,351,158	6,268,407	7,190,136

Philanthropy: Annual Giving for UCSC and AAU Institutions without a Medical School 2002 - 2007



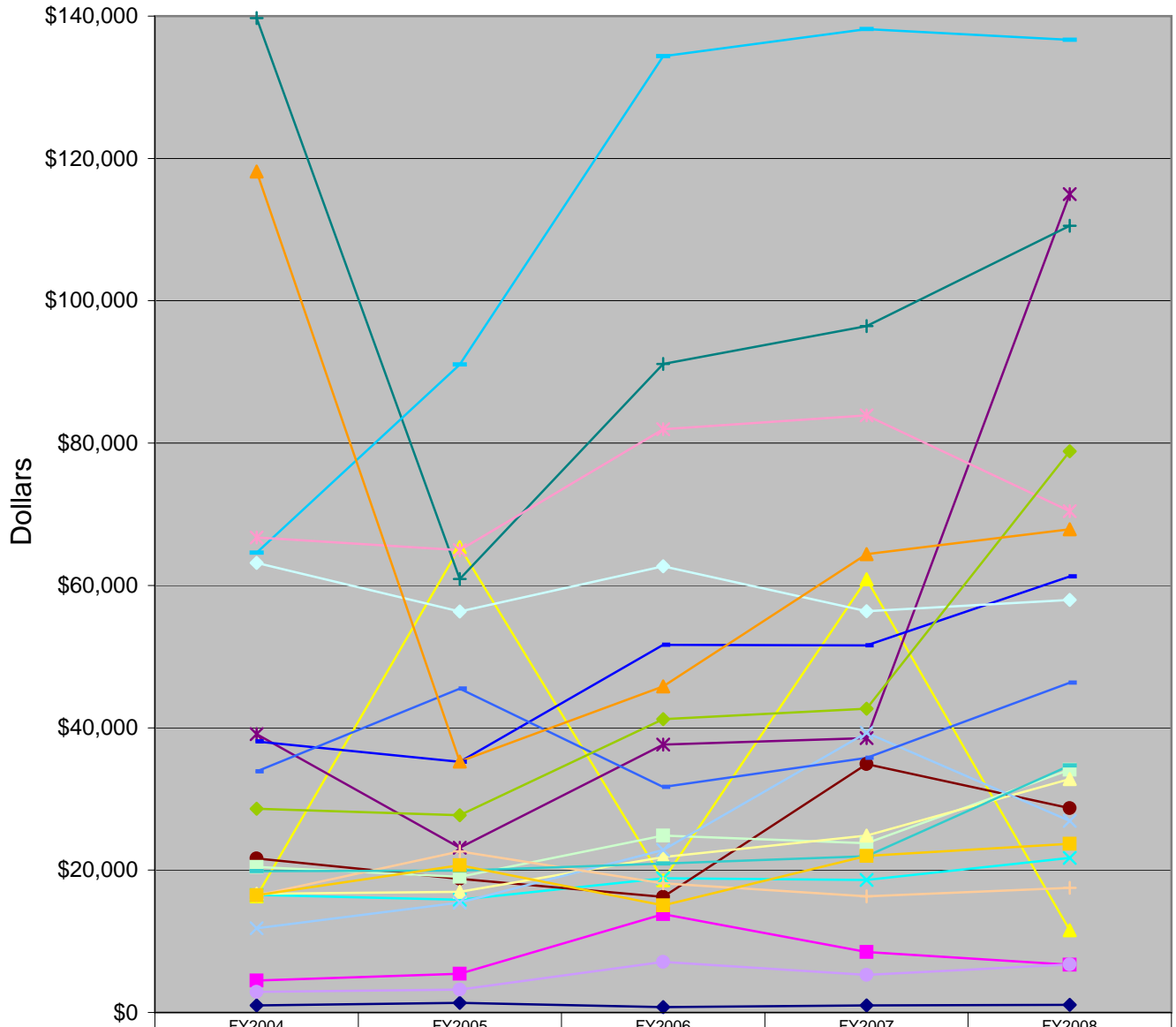
	2002	2003	2004	2005	2006	2007
UC Santa Cruz	\$13,513	\$18,169	\$15,048	\$24,090	\$26,051	\$29,120
Brandeis	\$63,354	\$72,066	\$64,012	\$65,554	\$79,907	\$86,297
Cal Tech	\$113,260	\$124,443	\$108,446	\$163,971	\$117,511	\$183,257
Carnegie Mellon	\$36,294	\$43,377	\$57,889	\$79,300	\$72,502	\$74,717
Indiana U-Bloomington	\$64,269	\$49,283	\$59,134	\$103,955	\$67,362	\$169,639
Iowa State	\$60,720	\$47,365	\$53,981	\$49,024	\$55,257	\$69,954
MIT	\$220,573	\$191,463	\$294,671	\$206,007	\$235,550	\$329,158
Pennsylvania State	\$140,931	\$121,480	\$107,400	\$90,309	\$114,580	\$129,829
Princeton	\$185,223	\$227,532	\$126,482	\$165,340	\$207,013	\$230,572
Purdue Main	\$164,000	\$103,445	\$163,727	\$170,815	\$161,737	\$200,683
Rice	\$59,493	\$57,930	\$57,219	\$52,918	\$69,696	\$67,768
Rutgers N Brunswick	\$74,637	\$79,793	\$63,245	\$63,374	\$66,971	\$88,336
Syracuse U	\$38,785	\$38,390	\$57,763	\$36,234	\$58,743	\$68,771
UC Berkeley	\$223,261	\$190,710	\$182,323	\$198,864	\$245,966	\$242,602
UC Santa Barbara	\$26,680	\$62,017	\$76,131	\$48,882	\$55,566	\$51,259
U of Colorado Boulder	\$61,006	\$39,600	\$34,716	\$37,722	\$35,272	\$45,990
U of Kansas	\$57,441	\$70,567	\$73,020	\$88,017	\$78,750	\$78,983
U of MD College Park	\$72,279	\$78,619	\$81,669	\$84,329	\$74,017	\$85,575
U of Nebraska Lincoln	\$64,416	\$55,578	\$64,195	\$53,669	\$68,986	\$61,473
U of Oregon	\$67,142	\$62,544	\$46,845	\$60,756	\$70,509	\$101,251
U of Texas Austin	\$155,312	\$309,484	\$264,935	\$140,239	\$176,497	\$228,759

Percent of Alumni Donating to UCSC and AAU Institutions without a Medical School 2004 - 2008



	2004%	2005	2006	2007	2008
UC Santa Cruz	6%	6%	6%	3%	9%
Brandeis	27%	26%	26%	27%	27%
Cal Tech	23%	23%	23%	24%	26%
Carnegie Mellon	26%	23%	21%	20%	18%
Indiana U-Bloomington	13%	15%	13%	14%	13%
Iowa State	14%	14%	15%	14%	12%
MIT	26%	27%	27%	24%	25%
Pennsylvania State	17%	17%	16%	16%	18%
Princeton	44%	43%	46%	45%	49%
Purdue Main	17%	16%	15%	15%	17%
Rice	31%	30%	29%	28%	27%
Rutgers N Brunswick	10%	9%	9%	10%	9%
Syracuse U	11%	10%	10%	10%	9%
UC Berkeley	9%	9%	8%	9%	9%
UC Santa Barbara	8%	8%	6%	6%	6%
U of Colorado Boulder	7%	8%	6%	3%	6%
U of Kansas	21%	20%	21%	21%	20%
U of MD College Park	12%	10%	9%	9%	9%
U of Nebraska Lincoln	5%	5%	8%	8%	8%
U of Oregon	15%	16%	15%	13%	11%
U of Texas Austin	9%	15%	13%	15%	14%

Alumni Giving for UCSC and AAU Institutions without a Medical School FY2004-FY2008



	FY2004	FY2005	FY2006	FY2007	FY2008
UC Santa Cruz	\$980	\$1,368	\$758	\$980	\$1,073
Brandeis	\$4,491	\$5,422	\$13,806	\$8,495	\$6,714
Cal Tech	\$16,325	\$65,401	\$18,583	\$60,862	\$11,570
Carnegie Mellon	\$16,532	\$15,828	\$18,857	\$18,634	\$21,733
Indiana U-Bloomington	\$39,092	\$23,131	\$37,642	\$38,556	\$114,974
Iowa State	\$21,639	\$18,790	\$16,233	\$34,892	\$28,722
MIT	\$139,723	\$60,915	\$91,111	\$96,439	\$110,535
Pennsylvania State	\$38,094	\$35,199	\$51,642	\$51,570	\$61,273
Princeton	\$64,605	\$91,029	\$134,344	\$138,164	\$136,668
Purdue Main	\$63,190	\$56,325	\$62,705	\$56,395	\$57,983
Rice	\$20,437	\$19,041	\$24,870	\$23,782	\$34,122
Rutgers N Brunswick	\$16,669	\$16,943	\$21,827	\$24,853	\$32,808
Syracuse U	\$11,839	\$15,456	\$22,847	\$39,320	\$26,910
UC Berkeley	\$66,759	\$64,976	\$81,950	\$83,893	\$70,450
UC Santa Barbara	\$2,893	\$3,225	\$7,124	\$5,263	\$6,760
U of Colorado Boulder	\$16,443	\$22,640	\$18,147	\$16,305	\$17,511
U of Kansas	\$33,873	\$45,493	\$31,683	\$35,760	\$46,321
U of MD College Park	\$19,837	\$19,949	\$20,944	\$21,959	\$34,692
U of Nebraska Lincoln	\$28,630	\$27,732	\$41,198	\$42,697	\$78,862
U of Oregon	\$16,462	\$20,681	\$15,068	\$21,977	\$23,706
U of Texas Austin	\$118,165	\$35,250	\$45,820	\$64,419	\$67,886

Data Definitions

Admit Rate

Number of fall frosh admits divided by number of fall frosh applicants.

Source: NCES IPEDS Completion Survey

<http://nces.ed.gov/ipeds/pas/index.asp>

Alumni Giving

Contributions actually received during the institution's fiscal year in the form of cash, securities, company products, and other property from alumni.

Source: Council for Aid to Education's (CAE) Voluntary Support of Education (VSE) Survey. Limited access to VSE data is available on-line at <http://www.cae.org/vse>.

Alumni Giving Rate

Number of undergraduate donors in a given year divided by the number of living addressable undergraduate alumni for the corresponding academic year.

Source: Council for Aid to Education's (CAE) Voluntary Support of Education (VSE) Survey. Limited access to VSE data is available on-line at <http://www.cae.org/vse>.

Annual Giving

Contributions actually received during the institution's fiscal year in the form of cash, securities, company products, and other property from alumni, non-alumni individuals, corporations, foundations, religious organizations, and other groups. Not included are public funds, earnings on investments held by the institution, and unfulfilled pledges.

Source: Council for Aid to Education's (CAE) Voluntary Support of Education (VSE) Survey. Limited access to VSE data is available on-line at <http://www.cae.org/vse>.

Doctorates Awarded

Doctorates awarded in an academic year from July to June.

Source: NCES IPEDS Completion Survey

<http://nces.ed.gov/ipeds/pas/index.asp>

Endowment Assets

The market value of endowment assets as of June (end of the fiscal year).

Source: Council for Aid to Education's (CAE) annual Voluntary Support of Education (VSE) survey.

Enrollments

Total headcount fulltime students enrolled on fall census date.

Minority counts include African American, American Indian / Alaska Native, Asian, and Hispanic students.

Underrepresented counts include African American, American Indian / Alaska Native, and Hispanic students.

Source: NCES IPEDS Completion Survey

<http://nces.ed.gov/ipeds/pas/index.asp>

Faculty Awards

Faculty awards from the following prominent grant and fellowship programs in the arts and humanities (A&H), science, engineering, and health fields (Sci & Eng) as designated by Center for Measuring University Performance (CMUP):

- American Council of Learned Societies (ACLS) Fellows, 2004-05: A&H <http://www.acls.org/>
- Beckman Young Investigators, 2005: Sci & Eng <http://www.beckman-foundation.com/byi.html>
- Burroughs Wellcome Fund Career Awards, 2005: Sci & Eng
http://www.bwfund.org/programs/interfaces/career_grant_recipients.html
- Cottrell Scholars, 2005: Sci & Eng <http://www.rescorp.org>
- Fulbright American Scholars, 2005-06: A&H <http://www.cies.org>
- Getty Scholars in Residence, 2005-06: A&H <http://www.getty.edu>
- Guggenheim Fellows, 2005: A&H <http://www.gf.org/newfellow.html>
- Howard Hughes Medical Institute Investigators, 2005: Sci & Eng <http://www.hhmi.org>
- Lasker Medical Research Awards, 2005: Sci & Eng
<http://www.laskerfoundation.org/awards/awards.html>
- MacArthur Foundation Fellows, 2005: Sci & Eng <http://www.macfound.org>
- Andrew W. Mellon Foundation Distinguished Achievement Awards, 2005: Sci & Eng
<http://www.mellon.org>

- National Endowment for the Humanities (NEH) Fellows, 2006: A&H
<http://www.neh.gov/news/recentawards.html>
 - National Humanities Center Fellows, 2005-06: A&H <http://www.nhc.rtp.nc.us/>
 - National Institutes of Health (NIH) MERIT (R37) FY 2005: Sci & Eng
<http://grants.nih.gov/grants/award/state/state.htm>
 - National Medal of Science and National Medal of Technology, 2004: Sci & Eng
<http://www.nsf.gov/nsb/awards/nms/recipients.cfm>
<http://www.ta.doc.gov/Medal/default.htm>
 - NSF CAREER awards (excluding those who are also PECASE winners), 2005: Sci & Eng
<http://www.nsf.gov/home/crssprgm/career/press.htm>
 - Newberry Library Long-term Fellows, 2005-06: A&H <http://www.newberry.org>
 - Pew Scholars in Biomedicine, 2005: Sci & Eng <http://futurehealth.ucsf.edu/pewscholar.html>
 - Presidential Early Career Awards for Scientists and Engineers (PECASE), 2005: Sci & Eng
<http://www.nsf.gov/home/crssprgm/pecase/press.htm>
 - Robert Wood Johnson Policy Fellows, 2005-06: Sci & Eng <http://www.healthpolicyfellows.org/home.php>
 - Searle Scholars, 2005: Sci & Eng http://www.searlescholars.net/scholar_network/current_institution.html
 - Sloan Research Fellows, 2005: Sci & Eng <http://www.sloan.org>
 - US Secretary of Agriculture Honor Awards, 2005: Sci & Eng
http://www.csrees.usda.gov/business/other_links/honorawards.html
 - Woodrow Wilson Fellows, 2005-06: A&H <http://www.wilsoncenter.org/>
- Source:** Center for Measuring University Performance (CMUP)

Faculty Counts

Full-time (9-12 month contracts) of instructional faculty holding titles professor, associate professor, assistant professor, lecturer and non-tenure faculty as of November. Ladder faculty counts do not include lecturer and non-tenure faculty.

Minority counts include African American, American Indian / Alaska Native, Asian, and Hispanic ethnic groups.

Source: NCES IPEDS Completion Survey

<http://nces.ed.gov/ipeds/pas/index.asp>

Graduation Rate

Percentage of fall frosh cohort graduating within six years.

Minority rates include African American, American Indian / Alaska Native, Asian, and Hispanic students.

Underrepresented rates include African American, American Indian / Alaska Native, and Hispanic students.

Source: NCES IPEDS Completion Survey

<http://nces.ed.gov/ipeds/pas/index.asp>

Pell Grant Recipients

Percentage of undergraduates receiving Pell grants (number of undergraduates receiving Pell grants in an academic year divided by the total number of undergraduates, excluding nonresident Alien undergraduates).

Source: US Department of Education Office of Postsecondary Education via the Postsecondary Education Opportunity Office (www.postsecondary.org). Enrollment data is obtained from IPEDS.

Postdoctoral Appointees

Post Docs are defined as "individuals with science and engineering PhD's, MD's, DDS's or DVM's and foreign degrees equivalent to U.S. doctorates who devote their primary effort to their own research training through research activities or study in the department under temporary appointments carrying no academic rank. Clinical fellows and those in medical residency training programs are excluded. CMUP data is used for single-campus data in cases when NSF aggregates campus data in its published reports.

Source: <http://www.nsf.gov/statistics/> primary <http://webcaspar.nsf.gov/> (query tool)

Research Expenditures, Federal

Expenditures for research and development in science and engineering fields funded by federal government agencies, but excluding Federally Funded Research Labs.

Source: National Science Foundation's NSF/SRS Survey of R&D Expenditures at Universities and Colleges, CMUP for campus specific data when NSF reports systemwide data

<http://www.nsf.gov/statistics/> primary <http://webcaspar.nsf.gov/> (query tool)

<http://mup.asu.edu/Index.html> secondary

Research Expenditures, Total

Expenditures for research and development in science and engineering fields funded by federal, state and local government, industry, etc., but excluding Federally Funded Research Labs.

Source: National Science Foundation's NSF/SRS Survey of R&D Expenditures at Universities and Colleges

<http://www.nsf.gov/statistics/> primary <http://webcaspar.nsf.gov/> (query tool)

<http://mup.asu.edu/Index.html> secondary

SAT Scores

The 25th and 75th percentile scores for SAT I critical reading and math.

Source: IPEDS from the College Board.

<http://nces.ed.gov/ipeds/pas/index.asp>

Yield Rate

Number of fall frosh enrollees divided by the number of fall frosh admits.

Source: NCES IPEDS Completion Survey

<http://nces.ed.gov/ipeds/pas/index.asp>

Data Sources

Association of American Universities (AAU)

<http://www.aau.edu/>

AAU was founded in 1900 by a group of fourteen universities to advance the international standing of US research universities and now consists of 60 American and 2 Canadian universities. Membership in the Association is by invitation. AAU focuses on issues that are important to research-intensive universities such as funding for research, research policy issues, and graduate and undergraduate education, which comprise many of the metrics in this report.

Data: UCSC Comparators for the Campuswide Strategic Indicators consists of the AAU institutions without medical schools

The Center for Measuring University Performance (CMUP)

<http://mup.asu.edu/Index.html> , PO Box 877805, Tempe, AZ 85287-7805

The CUMP was established during the 1990s as the Lombardi Program on Measuring University Performance at the University of Florida. It was later adapted at U Mass - Amherst, Arizona State University and the University at Buffalo, and has since been relocated to Arizona State University. The effectiveness of its techniques brought national attention and a commitment to translate the methodology to a general data-driven perspective applicable to any research university. The primary sources of the data are the NCES (IPEDS), NSF, Chronicle of Higher Education and national organizations (endowment and annual giving). The CMUP provides a comprehensive dataset for more than 600 institutions that report federal research expenditures to NSF of at least \$20 million. The CMUP annual report, [The Top American Research Universities](#) , provides analysis and data for understanding American research university performance on 9 institutional characteristics.

Data: National Academy members and Faculty awards data

Council for Aid to Education (CAE)

<http://cae.org/vse>

The Council for Aid to Education (CAE) annually collects data through the Voluntary Support of Education (VSE) Survey. Data includes Endowment Funds, Philanthropy / Annual Giving, Alumni Giving, Alumni Giving Rate, and related measures. Access to data is restricted.

Data: Endowment, Philanthropy / Annual Giving, Alumni Giving, Alumni Giving Rate

The Education Trust

<http://www.collegeresults.org/aboutthedata.aspx>

<http://www2.edtrust.org/edtrust/>

The Education Trust was established in 1990 by the American Association for Higher Education as a special project to encourage colleges and universities to support K-12 reform. It has grown into an independent nonprofit organization whose mission is to make colleges work for all students. It seeks to close the achievement gaps that separate low-income student and students of color from other youth. The basic tenet is that all children will learn at high levels when they are taught to high levels.

Data: Pell Grant Recipients

Integrated Postsecondary Education Data System (IPEDS)

<http://nces.ed.gov/ipeds/>

The Integrated Postsecondary Education Data System (IPEDS) was established as the core postsecondary education data collection program for National Center for Educational Statistics (NCES), which is the primary federal entity for collecting and analyzing data related to education in the U.S. and other nations. NCES is located within the U.S. Department of Education and the Institute of Education Sciences.

IPEDS is a single, comprehensive system designed to encompass all postsecondary education institutions and educational organizations. The IPEDS system is built around a series of interrelated surveys to collect institution-level data in such areas as enrollments, program completions, faculty, staff, finances, and academic libraries.

Data: SAT scores, admit rate, yield rate, retention / graduation rates, enrollments, degrees awarded, faculty counts

National Science Foundation

<http://webcaspar.nsf.gov/>

National Science Foundation, as well as IPEDS data, can be accessed through the WebCASPAR website, which permits data queries at an institution specific level. The WebCASPAR database provides easy access to a large body of statistical data resources for science and engineering (S&E) at US academic institutions, although it also provides information on non-S&E fields and higher education in general.

Data: Postdoctoral appointment counts, R & D Expenditures (Total, Federal)