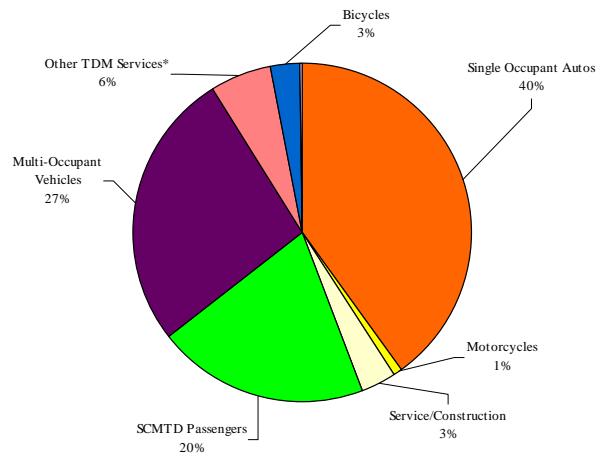


**UCSC Modal Mix Study
Fall 2003 Passenger-Trips**

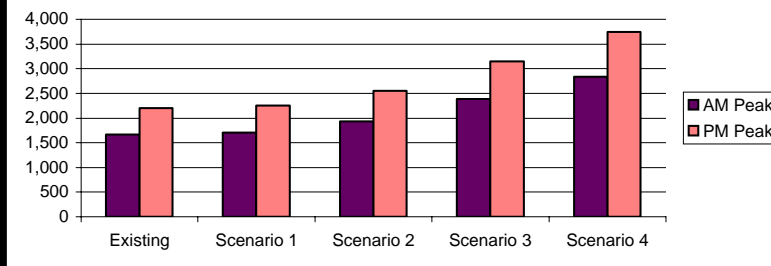


UNIVERSITY OF CALIFORNIA
SANTA CRUZ
LRDP #5, February 26, 2004

Current Campus Travel Mode Share

Cooper, Robertson & Partners
EDAW
Arup
Kimley-Horn & Associates

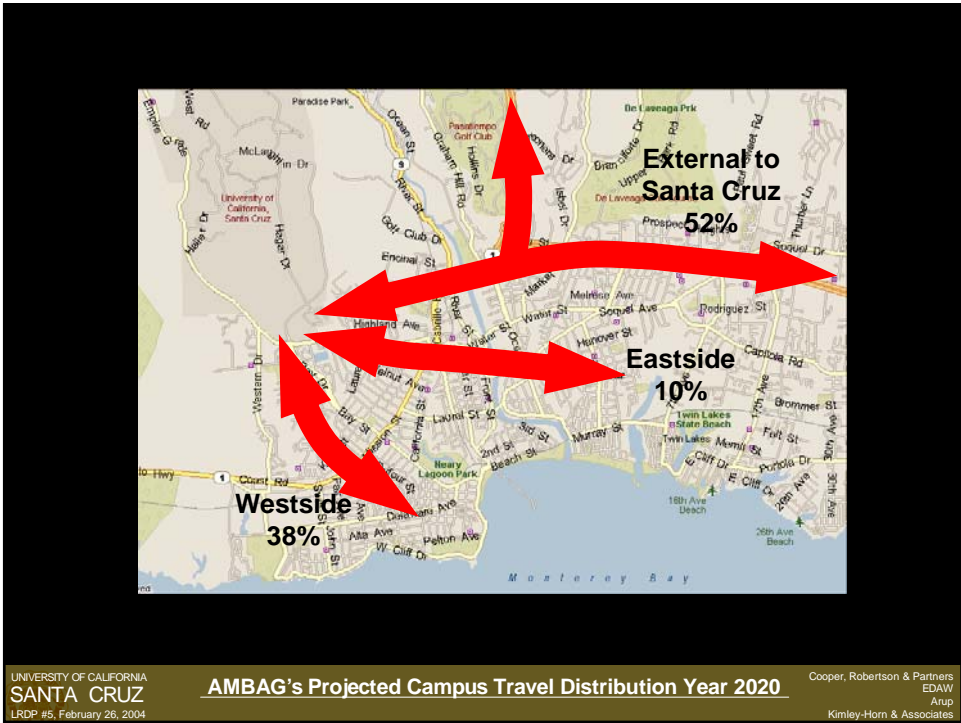
Projected Campus Peak Hour Traffic

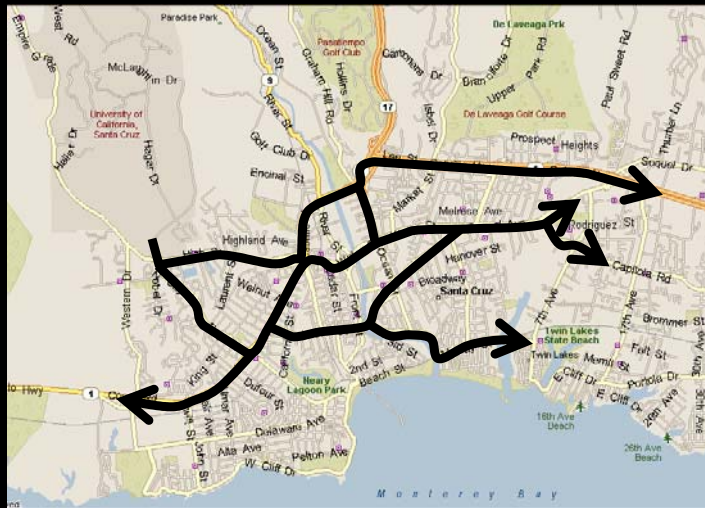


UNIVERSITY OF CALIFORNIA
SANTA CRUZ
LRDP #5, February 26, 2004

Projected Campus Peak Hour Traffic

Cooper, Robertson & Partners
EDAW
Arup
Kimley-Horn & Associates





UNIVERSITY OF CALIFORNIA
SANTA CRUZ
LRDP #5, February 26, 2004

Preliminary Travel Routes to Study

Cooper, Robertson & Partners
EDAW
Arup
Kimley-Horn & Associates

- Traffic and Access Improvements to Study:
 - Focused engineering plans for campus access routes
 - Consider secondary off-campus meeting facilities
 - Transportation Systems Management
 - Signal coordination
 - Incident management
 - Traveler information
 - High Occupancy Vehicle facilities
 - Land use planning to maximize trip linkage and internalization
 - Educational/promotional programs to change travel behavior
 - Off-campus transit-oriented housing
 - Special event traffic management plans

UNIVERSITY OF CALIFORNIA
SANTA CRUZ
LRDP #5, February 26, 2004

Potential Off-Campus Study Items

Cooper, Robertson & Partners
EDAW
Arup
Kimley-Horn & Associates

- Potential Transit Improvements:
 - Improve transit route coverage and service hours serving campus
 - Improve/introduce transit service to UCSC facilities in Westside and between campus
 - Introduce transit priority systems on city streets
 - Work with SCMTD to develop a Bus Rapid Transit system
 - Exclusive bus lanes
 - Transit pre-emption systems
 - Queue jump lanes
 - Improved fare collection

- Travel Demand Management:
 - Expand vanpool fleet
 - Workforce planning – providing employee housing near workplace
 - Car sharing program
- Potential Parking Considerations:
 - Off-campus park and ride facilities in eastside and westside locations
 - Parking guidance/wayfinding system
 - “Pay at Exit” use-based fee to encourage off-peak travel
 - Off-campus parking “storage” facilities