


Long Range Development Plan 2005 - 2020


University of California Santa Cruz

UNIVERSITY OF CALIFORNIA
SANTA CRUZ

Prrebu#j rehaswq# # d#aghtz
EDAW
Arup
Kimley-Horn & Associates

What is an LRDP?

- University of California equivalent to a city or county's general plan
 - updated periodically to respond to changing circumstances
- "... a comprehensive plan that guides physical development...needed to achieve academic goals..."
- "The Regents approve...each LRDP and its accompanying Environmental Impact Report..."



UNIVERSITY OF CALIFORNIA
SANTA CRUZ

Prrebu#j rehaswq# # d#aghtz
EDAW
Arup
Kimley-Horn & Associates

Why now?

- UCSC's current LRDP was published in 1988 and adopted by The Regents in May 1989
- EIR pledged no growth beyond 15,000 students in 2005 without appropriate CEQA environmental review
- Enrollment is approaching 15,000
 - 14,076 students on-campus winter quarter 2004
- Significantly changed circumstances since 1989

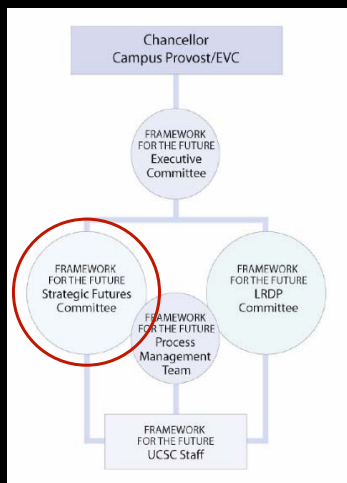
How are we going about it?

- Spring 2003 - initiation and "planning to plan":
Framework for the Future Planning Task Force
 - develop committee structure and process to revise LRDP
- Fall 2003 - development of plan:
Strategic Futures & LRDP Committees
 - guide development of new LRDP
 - target Regental approval in early 2006

Framework for the Future Task Force Recommendations

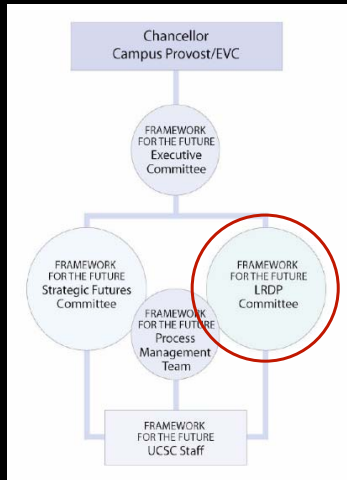
- parallel planning process
 - Strategic Futures Committee - academic & institutional goals
 - LRDP Committee - physical development
- 2020 planning horizon to coordinate with City of Santa Cruz General Plan
- outreach strategy to on- & off-campus constituencies
- enrollment scenario approach
 - preliminary evaluation of various enrollment levels

Strategic Futures Committee - Task and Membership



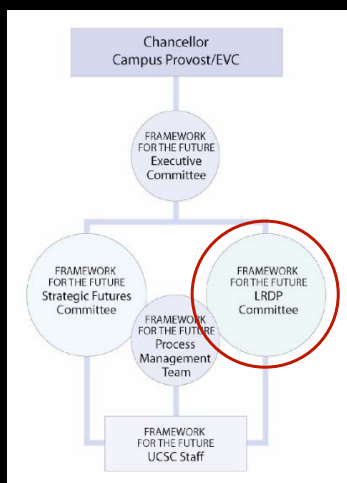
- propose enrollment scenarios based on academic and institutional considerations
- 15 members - faculty, administrators, student
- Professor Gary Griggs, chair
- March 2004 - initial recommendation
- June 2004 - final recommendation

LRDP Committee - Task and Membership



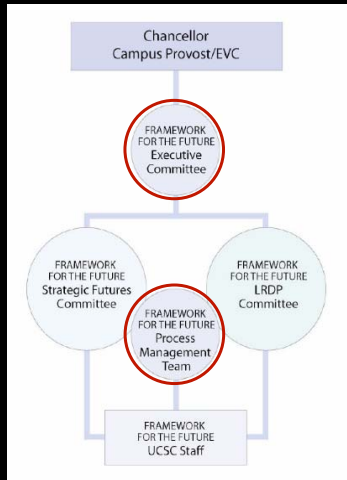
- direct the development of a physical plan that responds to the academic vision developed by the Strategic Futures Committee
- 33 members
 - students, faculty, staff, alumna, community representatives
- Vice Chancellor Tom Vani, chair

LRDP Committee Workgroups



- campus & community
- land use & environment
- housing & student life
- transportation & circulation
- infrastructure & technology

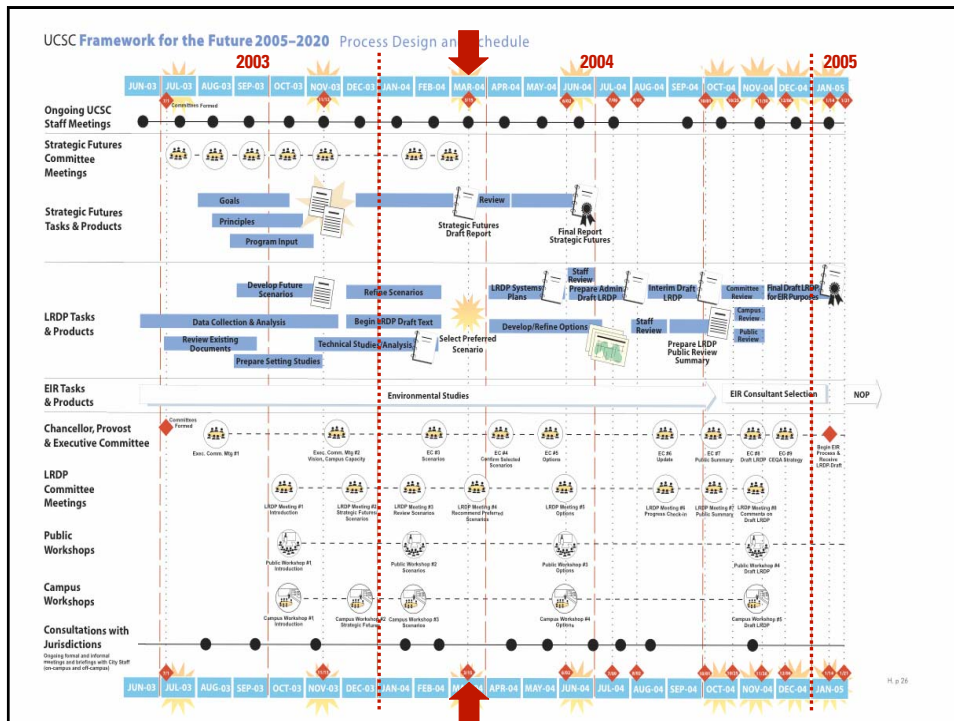
Framework for the Future Process Management

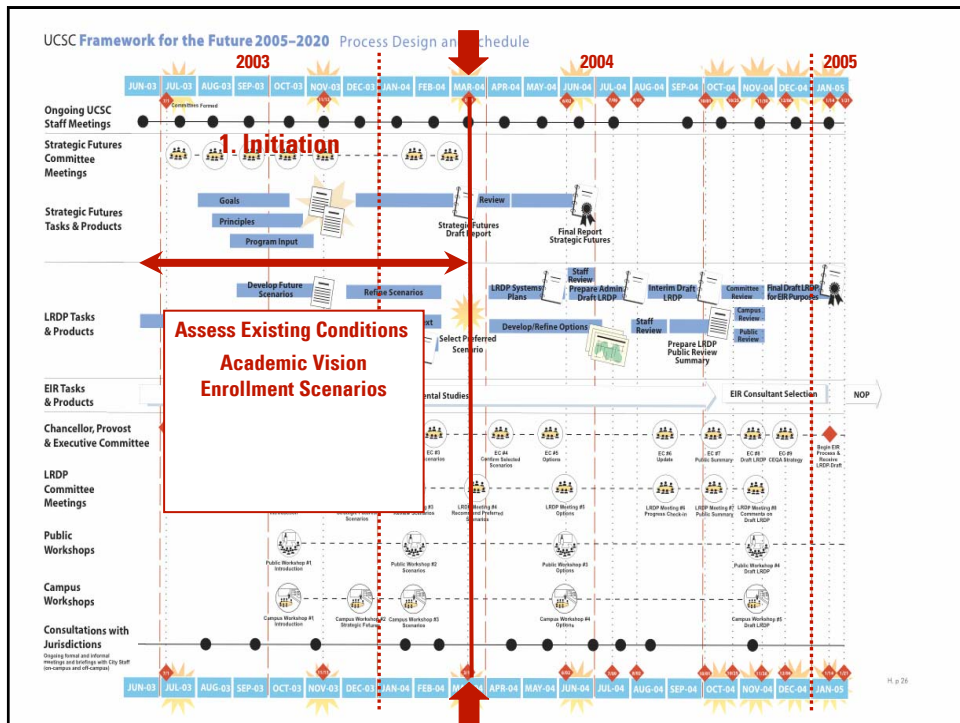
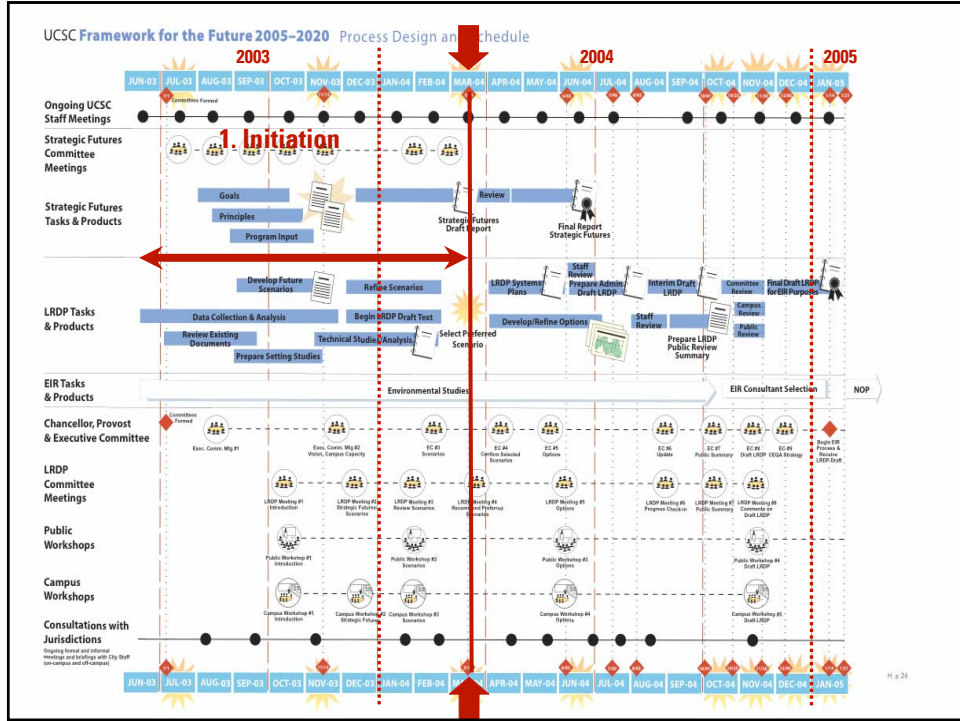


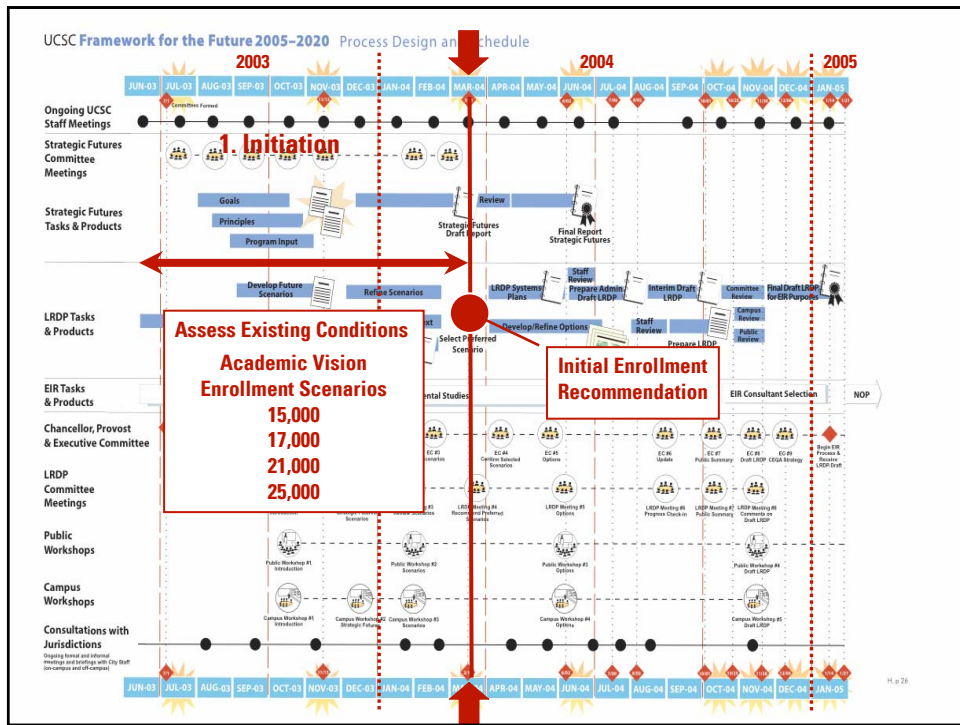
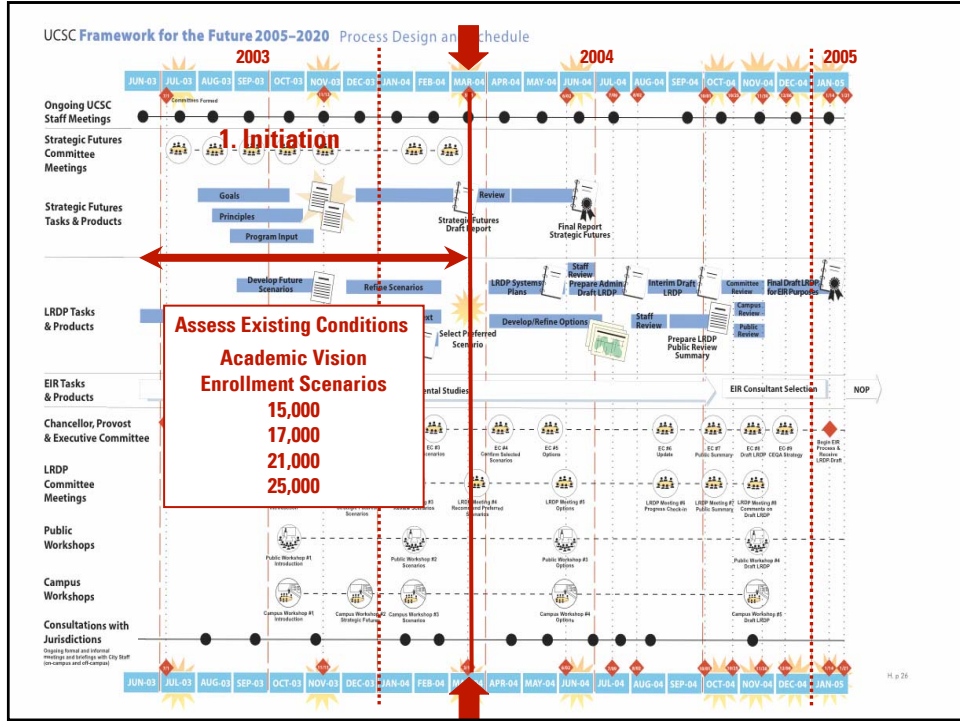
- Direction & Coordination
- Executive Committee
 - Chancellor
 - Executive Vice Chancellor
 - SFC & LRDP committee chairs
 - Academic Senate chair and vice chair
- Process Management Team
 - SFC & LRDP committee chairs
 - Academic Senate representatives
 - planning staff

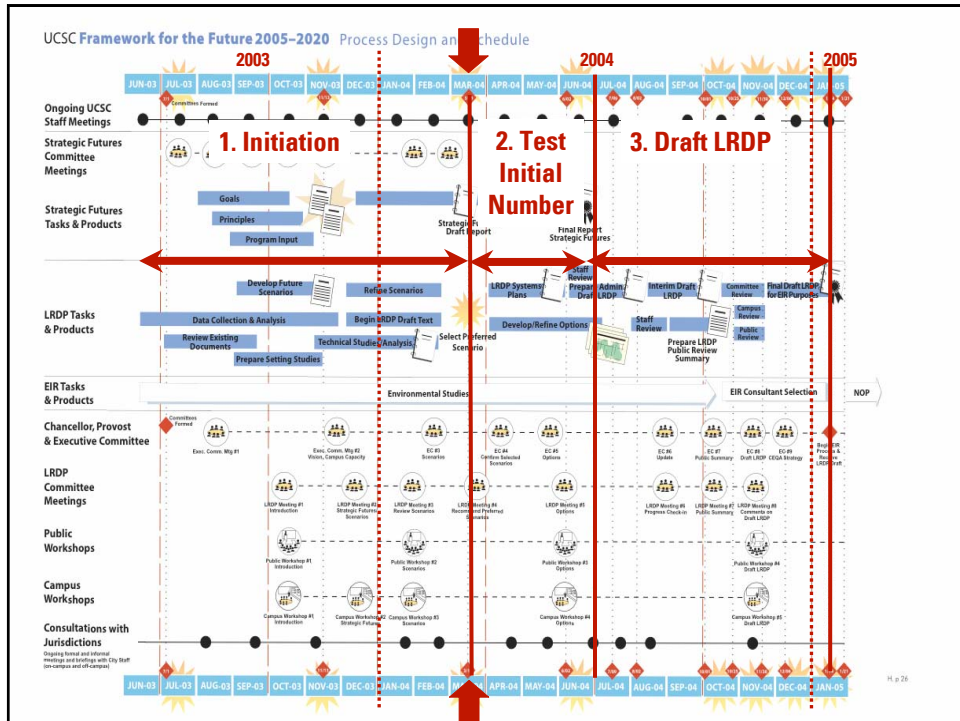
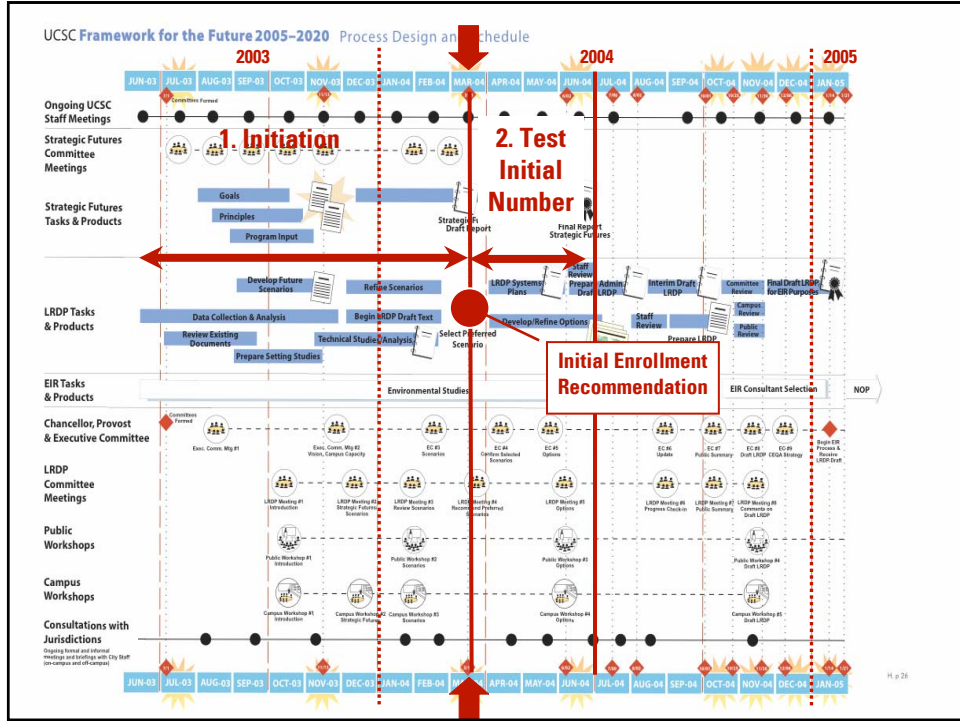
UNIVERSITY OF CALIFORNIA
SANTA CRUZ

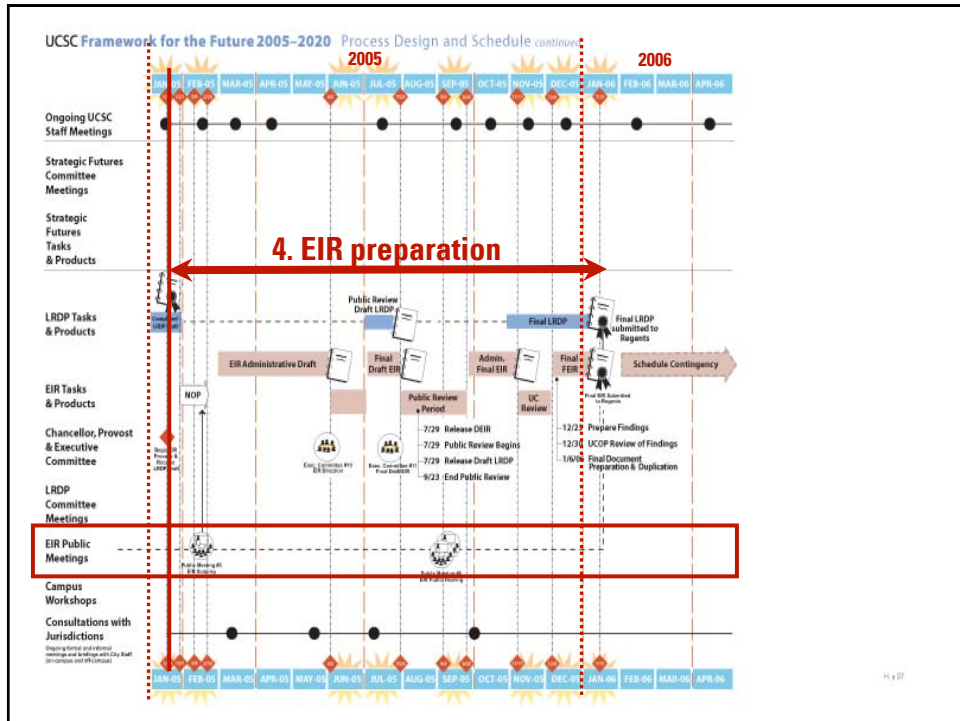
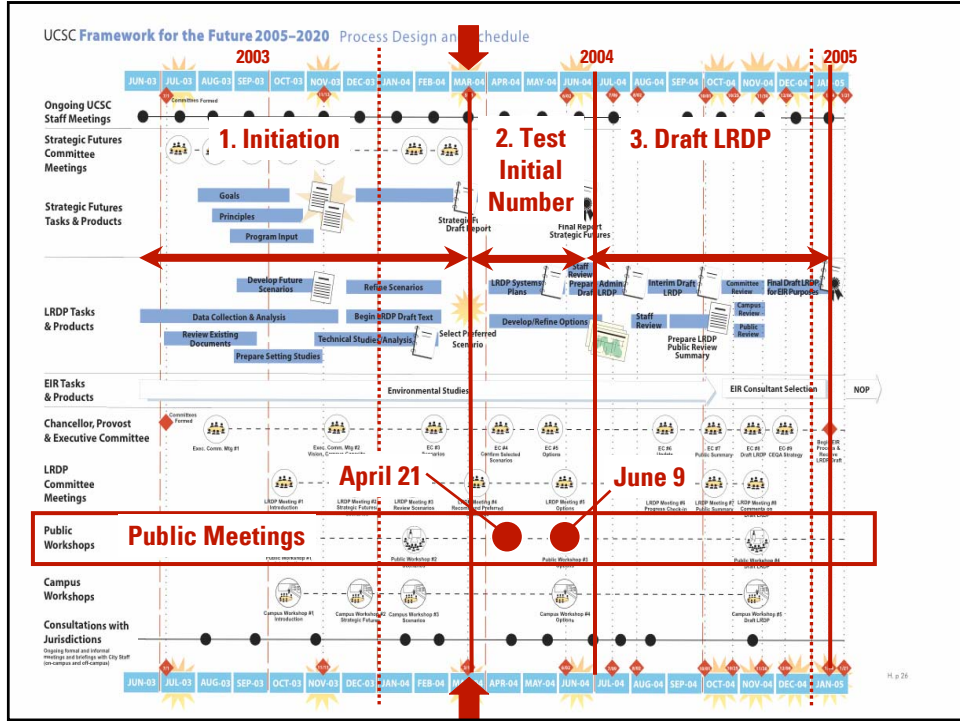
Franklin #1 rehsawq# #8 diaqhtuz
EDAW
Arup
Kimley-Horn & Associates

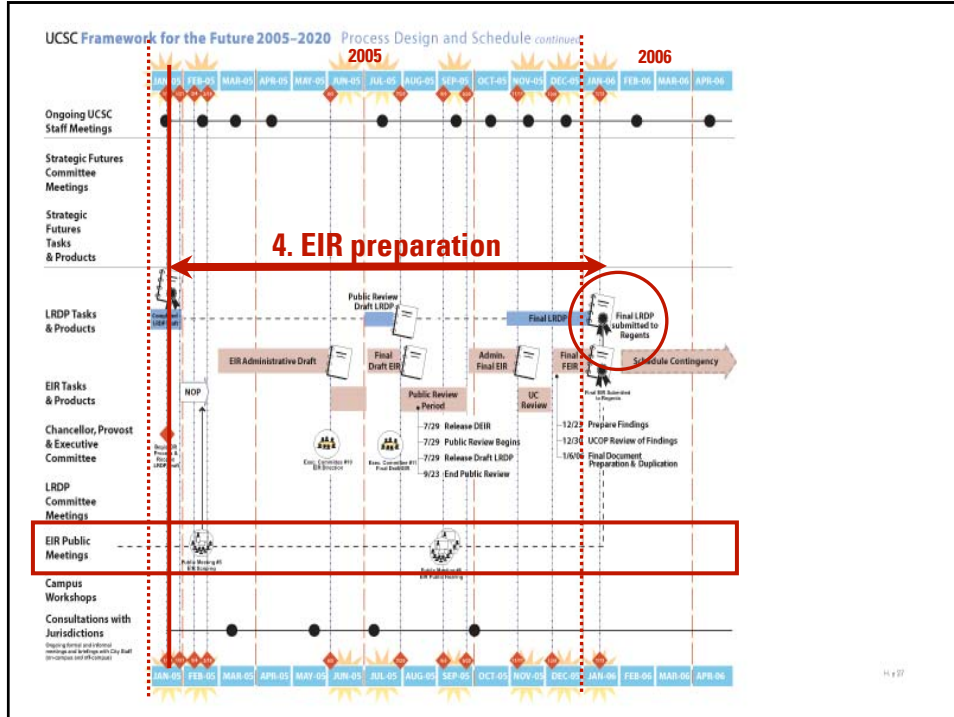












Public Outreach and Communications

- Upcoming Public Meetings
 - April 21
 - June 9
- Web Site:
 - planning.ucsc.edu/lrdp/index.htm
 - www.ucsc.edu - "Planning through 2020"
- comments:
 - planning.ucsc.edu/lrdp/feedback.htm
 - e-mail to lrdp-admin@ucsc.edu