



University of California  
Santa Cruz

**LRDP Committee Meeting #8  
with Strategic Futures Committee**

May 18, 2004

**UC Santa Cruz Long Range Development Plan 2005-2020  
Suggested Outline/Organization**

**I. EXECUTIVE SUMMARY**

**II. INTRODUCTION**

- a. Purpose and Authority
- b. Planning Process

**III. STATEMENT OF PRINCIPLES**

- a. Academic Principles
- b. Research Principles
- c. Student Life Principles
- d. Physical Planning Principles
- e. Community Principles

**IV. PLANNING CONTEXT**

- a. University of California
- b. Previous UCSC Long Range Development Plans
- c. Regional and Local Setting
- d. Campus Setting
- e. Existing and Approved Development

**V. 2005-2020 LONG RANGE DEVELOPMENT PLAN**

- a. Program Elements
- b. Enrollment and Population
- c. Land Use Plan
- d. Landscape and Open Space
- e. Development and Conservation Principles
- f. Circulation and Parking
- g. Utilities and Infrastructure

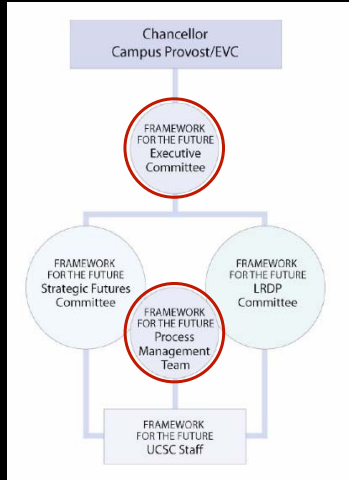
**VI. APPENDICES**

Draft- Pre-decisional – for Discussion Purposes Only

UNIVERSITY OF CALIFORNIA  
**SANTA CRUZ**  
LRDP/SFC #8, May 18, 2004

Cooper, Robertson & Partners  
EDAW  
Arup  
Kimley-Horn & Associates

# Framework for the Future Process Management



- **Direction & Coordination**
  - **Executive Committee**
    - Chancellor
    - Executive Vice Chancellor
    - SFC & LRDP committee chairs
    - Academic Senate chair and vice chair
  - **Process Management Team**
    - SFC & LRDP committee chairs
    - Academic Senate representatives
    - planning staff

Draft- Pre-decisional – for Discussion Purposes Only

UNIVERSITY OF CALIFORNIA  
**SANTA CRUZ**  
LRDP/SFC #8, May 18, 2004

Cooper, Robertson & Partners  
EDAW  
Arup  
Kimley-Horn & Associates

## Preliminary LRDP On-Campus Housing Program

		Land use alternative shown for
Undergraduate, single students	50%	70%
Graduate students	25%	50%
Family Students (single and families)	289 units*	
Faculty	25%	35%
Staff	5%	8%

Two new undergraduate colleges  
New graduate college

\* As part of undergrad and grad percentages

Draft- Pre-decisional – for Discussion Purposes Only

UNIVERSITY OF CALIFORNIA  
**SANTA CRUZ**  
LRDP/SFC #8, May 18, 2004

Cooper, Robertson & Partners  
EDAW  
Arup  
Kimley-Horn & Associates