

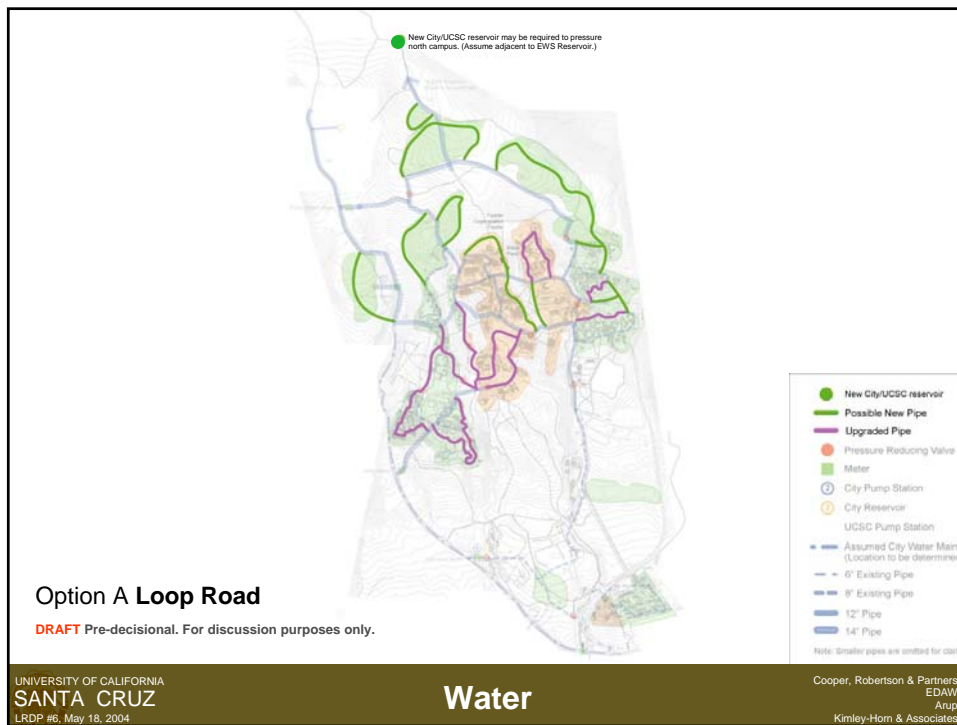
Aidan Hughes  
Principal  
ARUP

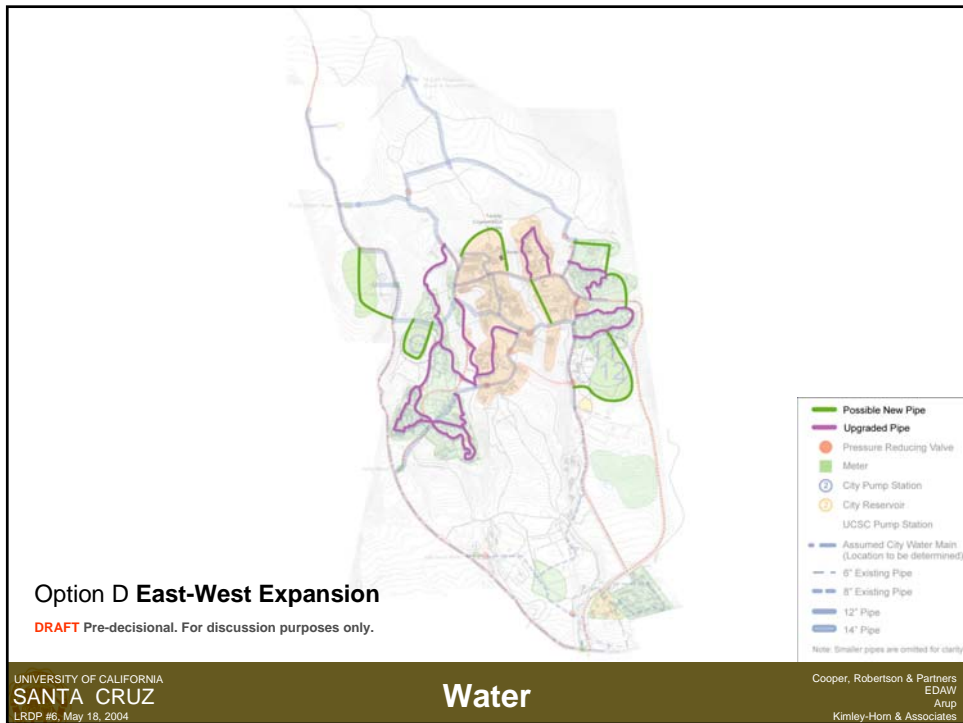
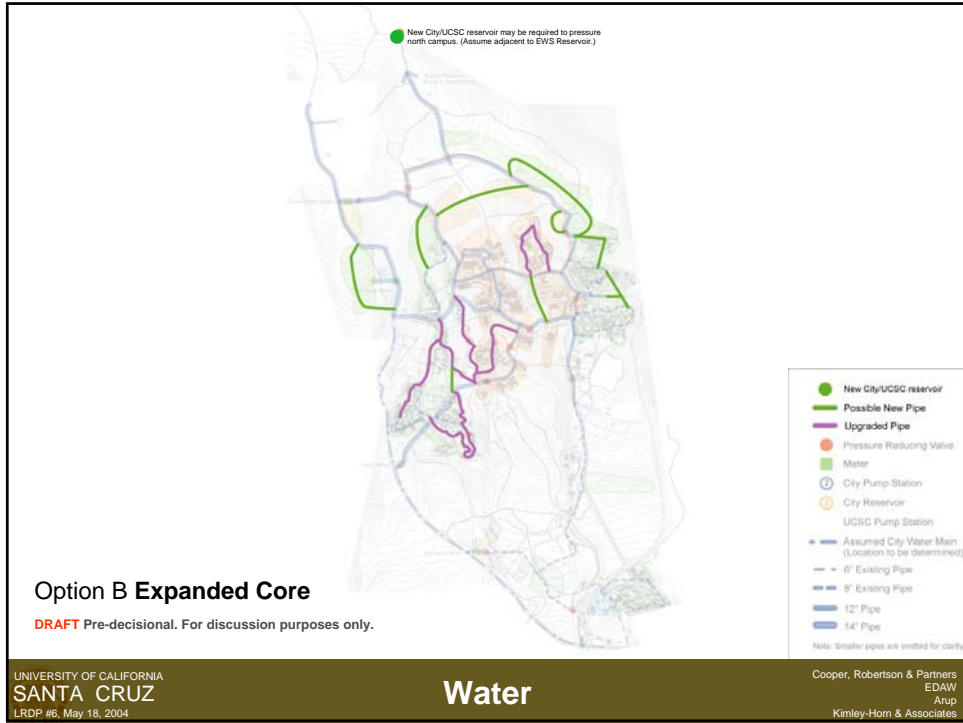
## Infrastructure Considerations University of California Santa Cruz

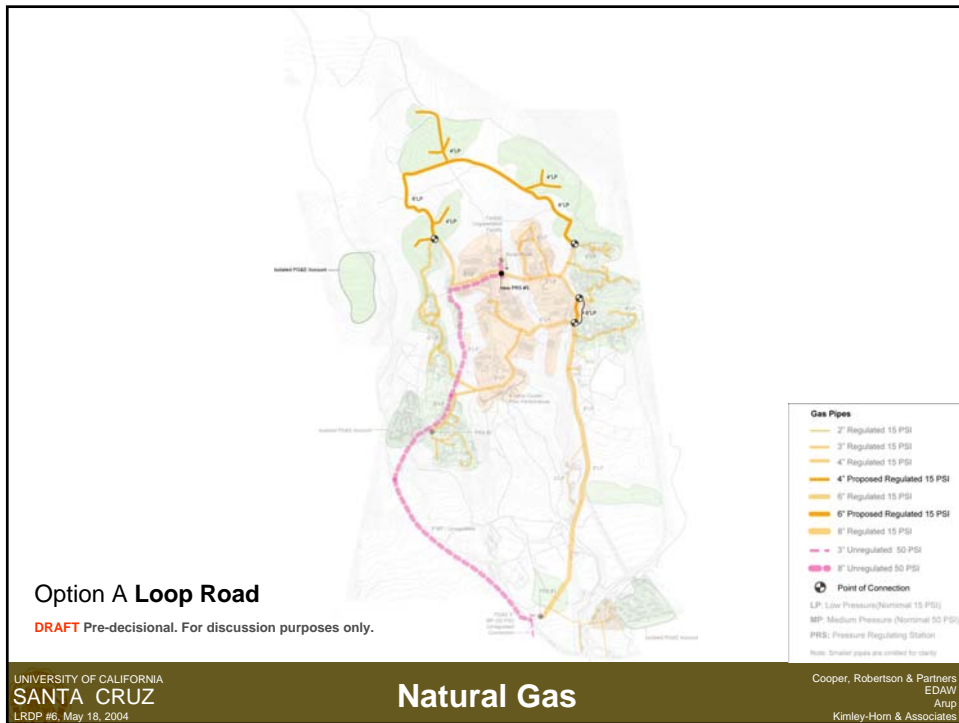
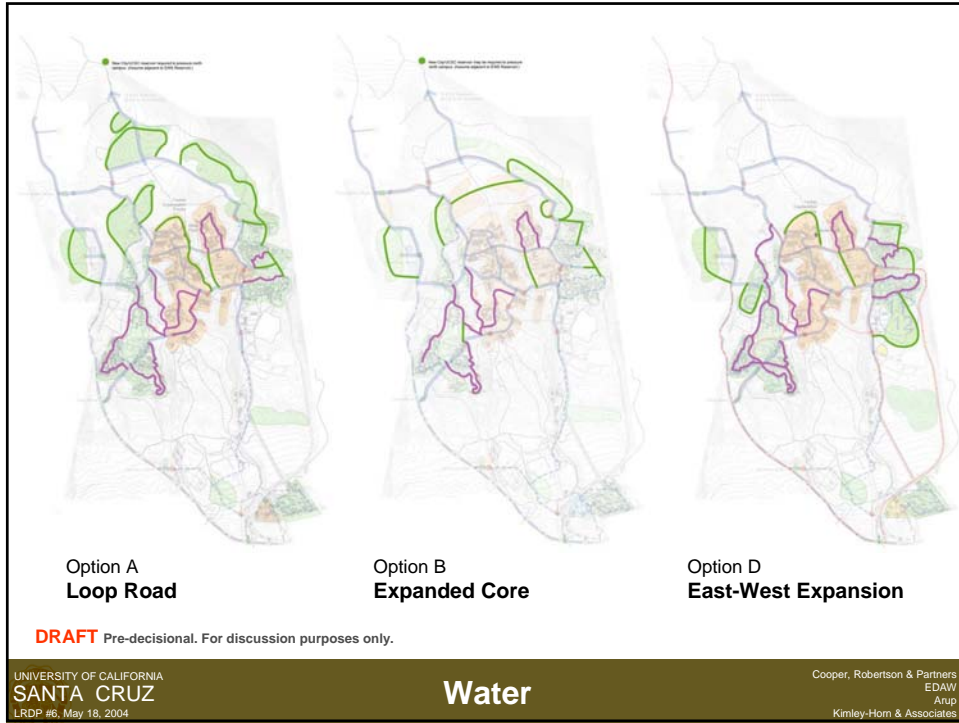
May 18, 2004

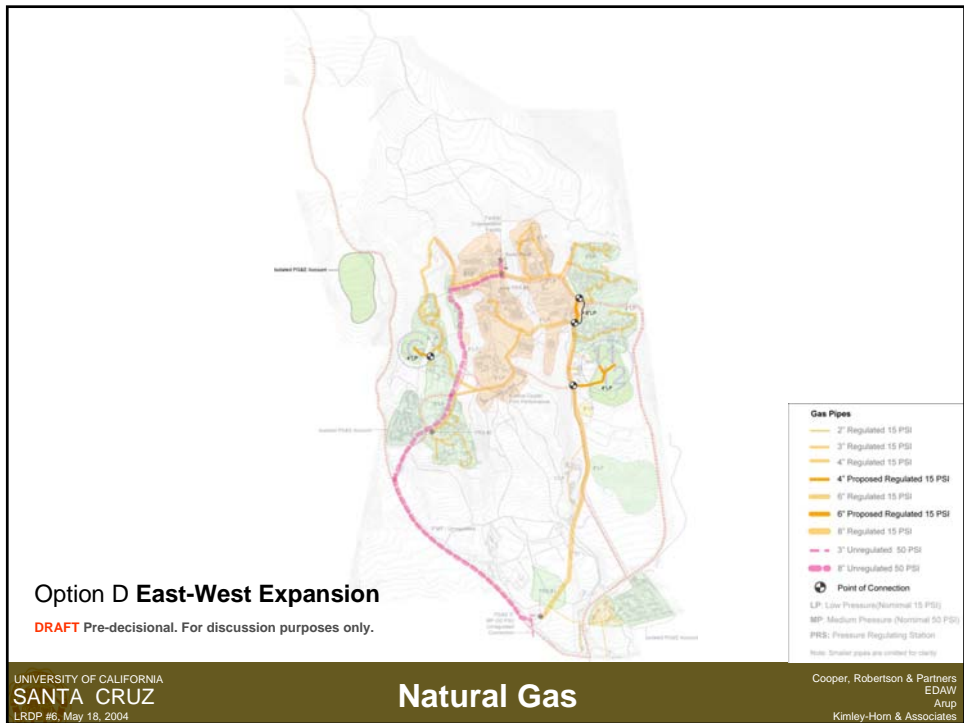
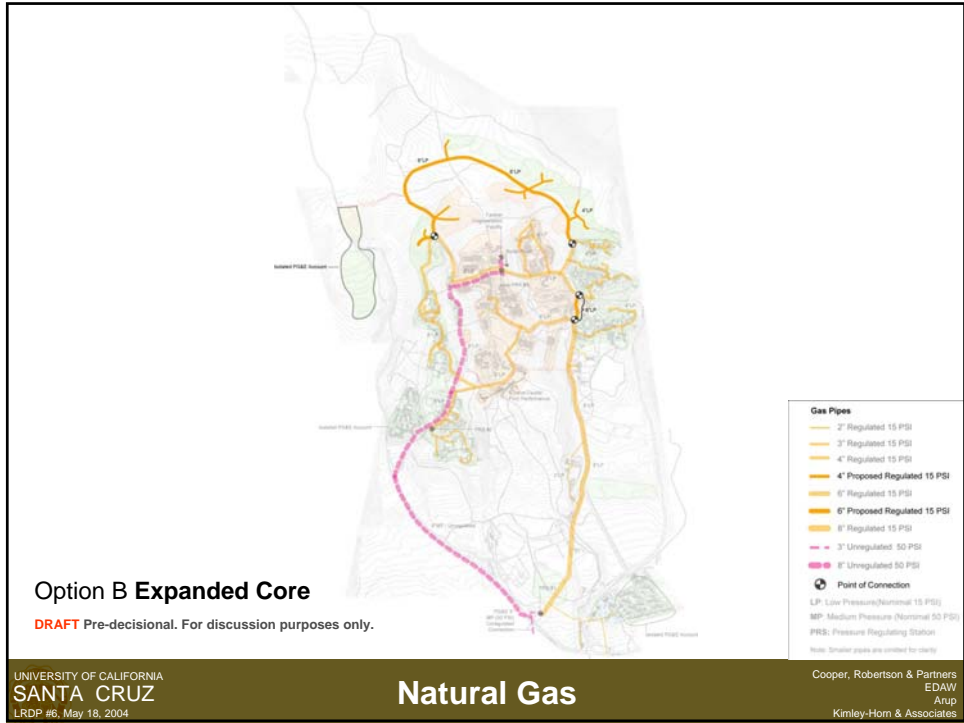
UNIVERSITY OF CALIFORNIA  
SANTA CRUZ  
LRDP #6, May 18, 2004

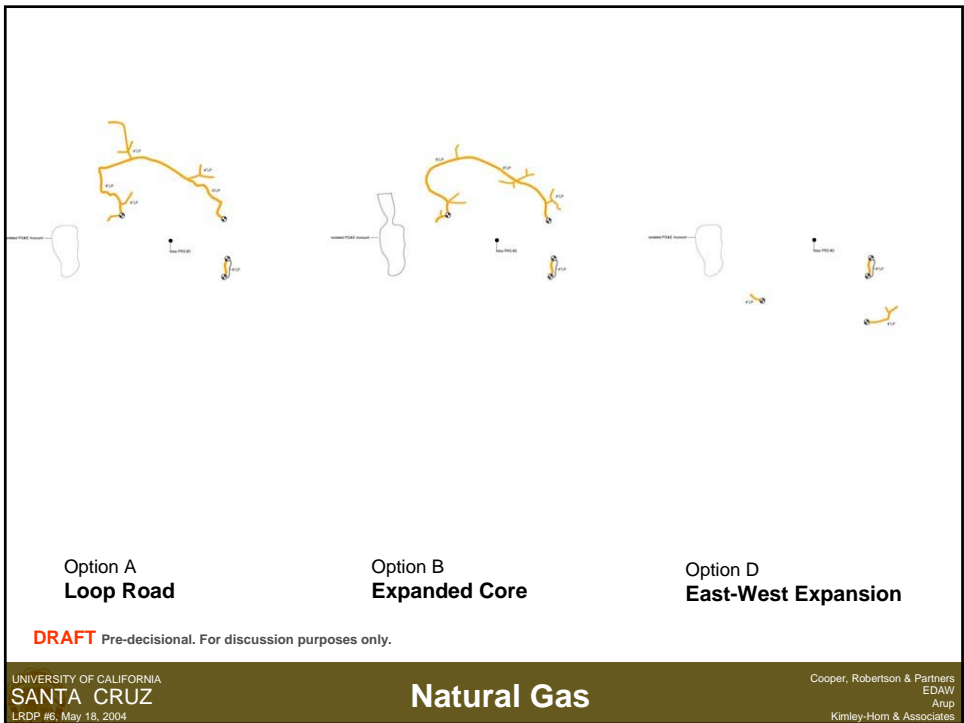
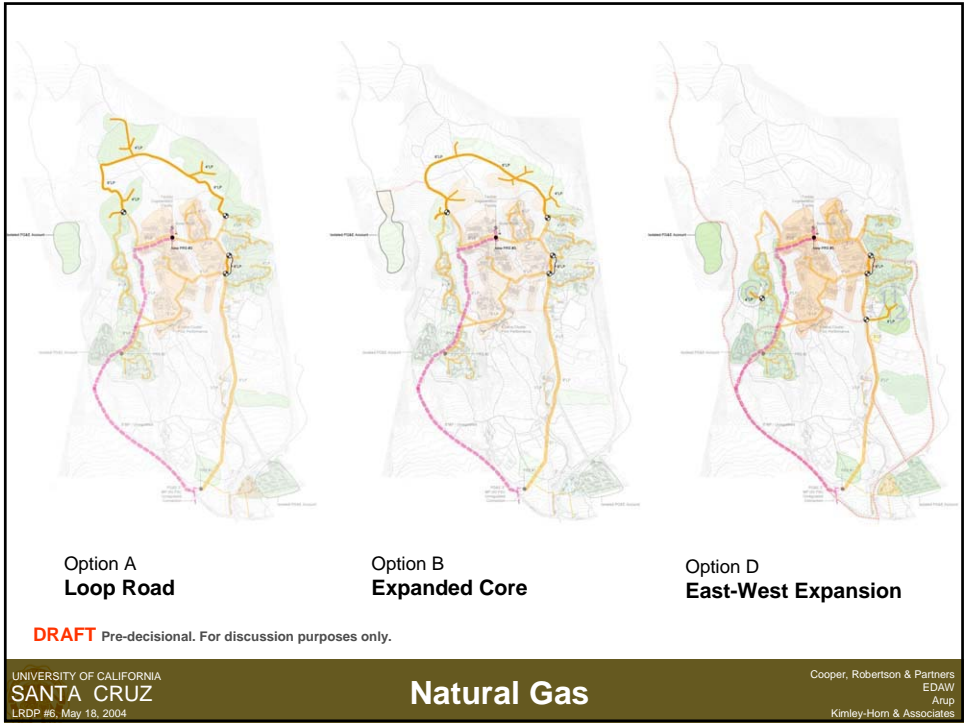
Cooper, Robertson & Partners  
EDAW  
Arup  
Kimley-Horn & Associates

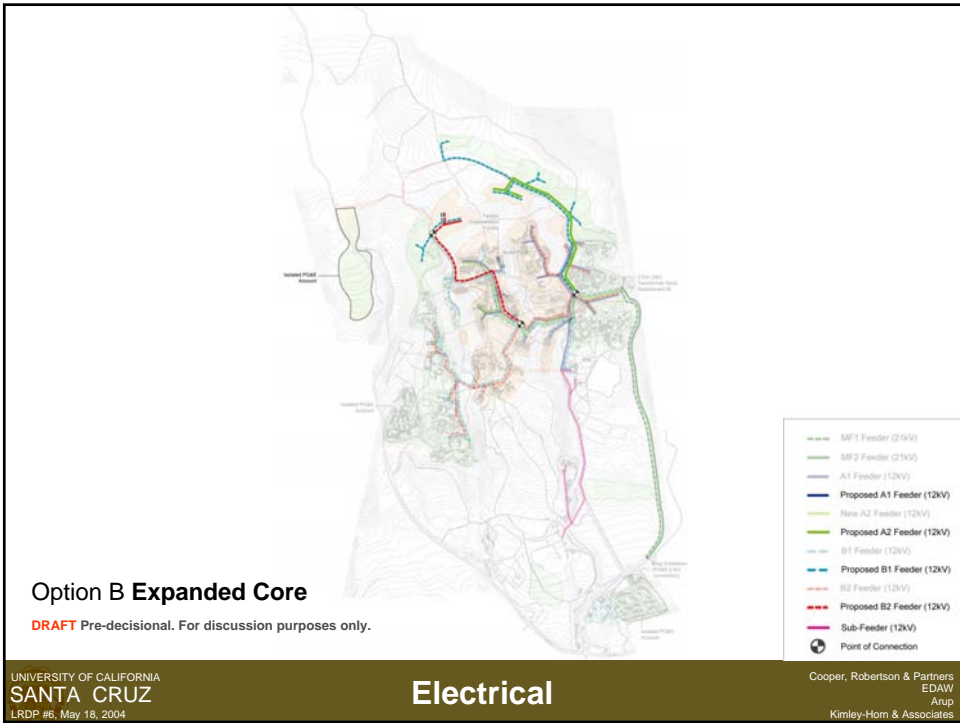
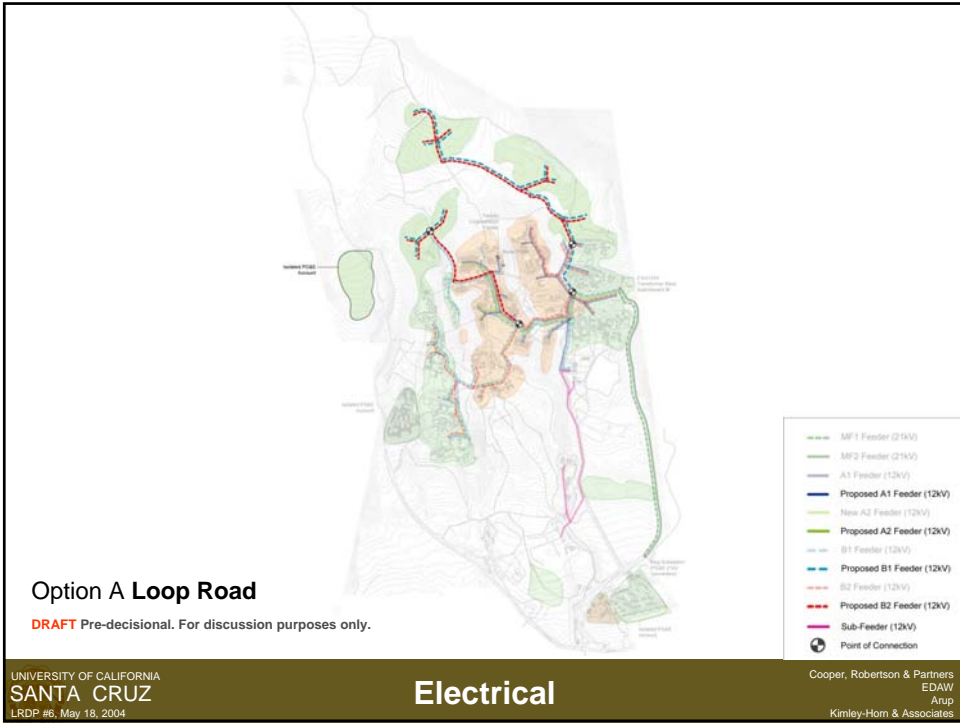


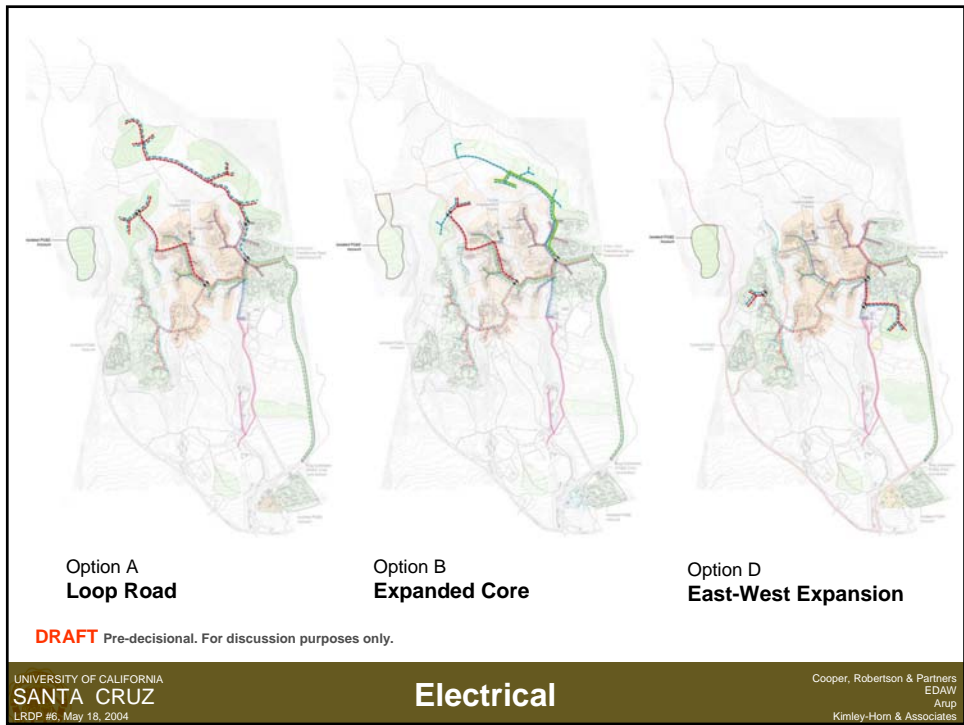
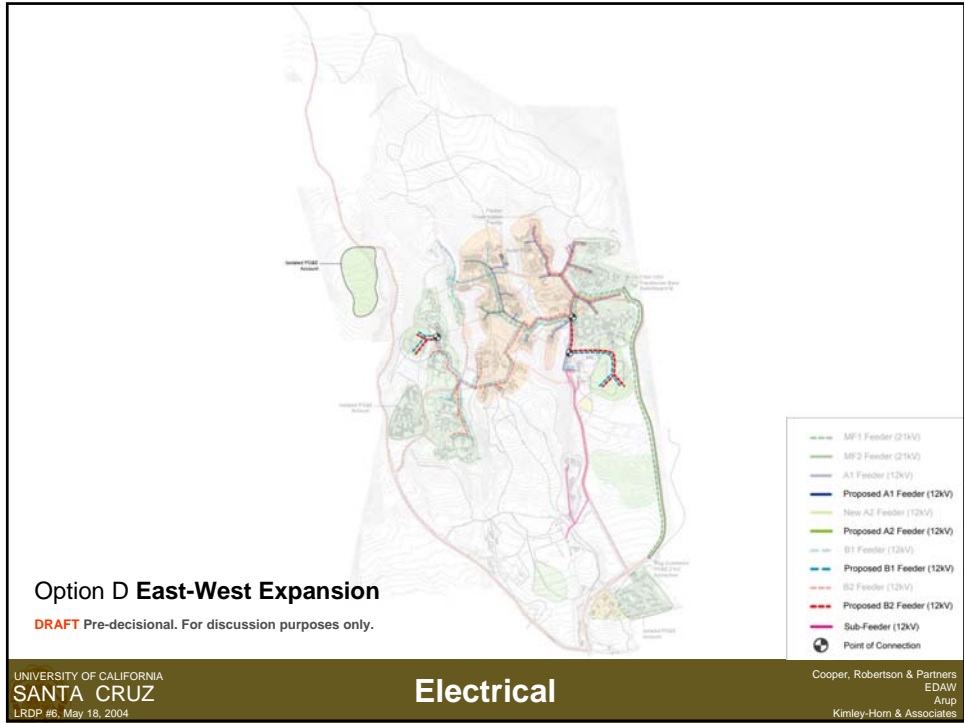












Option A  
**Loop Road**

Option B  
**Expanded Core**

Option D  
**East-West Expansion**

**UKAFI** Pre-decisional. For discussion purposes only.

UNIVERSITY OF CALIFORNIA  
**SANTA CRUZ**  
LRDP #6, May 18, 2004

**Electrical**

Cooper, Robertson & Partners  
EDAW  
Arup  
Kimley-Horn & Associates

- **Additional conservation: efficient irrigation, retrofit existing buildings**
- **Rainwater harvesting**
- **Greywater recycling**
- **Wastewater recycling**

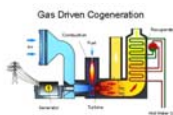
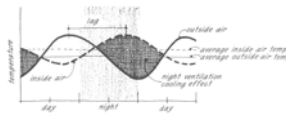
**DRAFT** Pre-decisional. For discussion purposes only.

UNIVERSITY OF CALIFORNIA  
**SANTA CRUZ**  
LRDP #6, May 18, 2004

**Considerations for Water**

Cooper, Robertson & Partners  
EDAW  
Arup  
Kimley-Horn & Associates

- Thermal Storage
- Retrofit & Recommission
- Absorption Cooling
- Emerging Technologies
- Expanded Generation

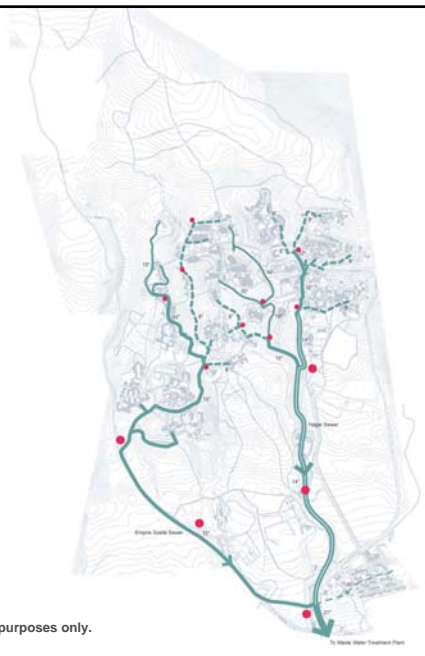


**DRAFT** Pre-decisional. For discussion purposes only.

UNIVERSITY OF CALIFORNIA  
SANTA CRUZ  
LRDP #6, May 18, 2004

## Considerations for Energy

Cooper, Robertson & Partners  
EDAW  
Arup  
Kimley-Horn & Associates



**DRAFT** Pre-decisional. For discussion purposes only.

UNIVERSITY OF CALIFORNIA  
SANTA CRUZ  
LRDP #6, May 18, 2004

## Considerations: Wastewater Treatment

Cooper, Robertson & Partners  
EDAW  
Arup  
Kimley-Horn & Associates

