

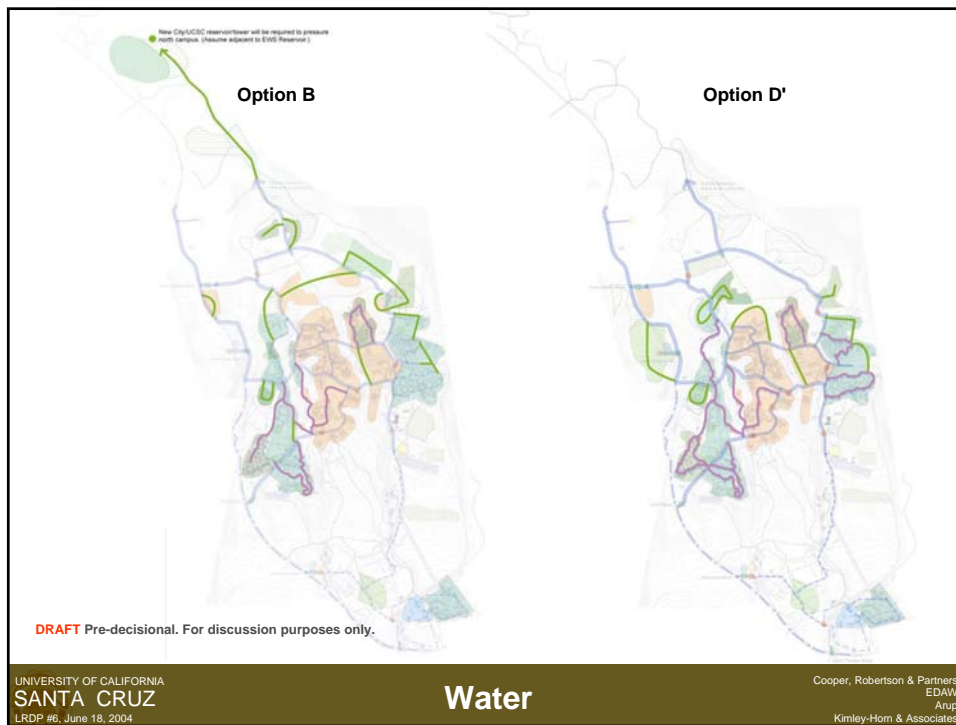
Aidan Hughes
Principal
ARUP

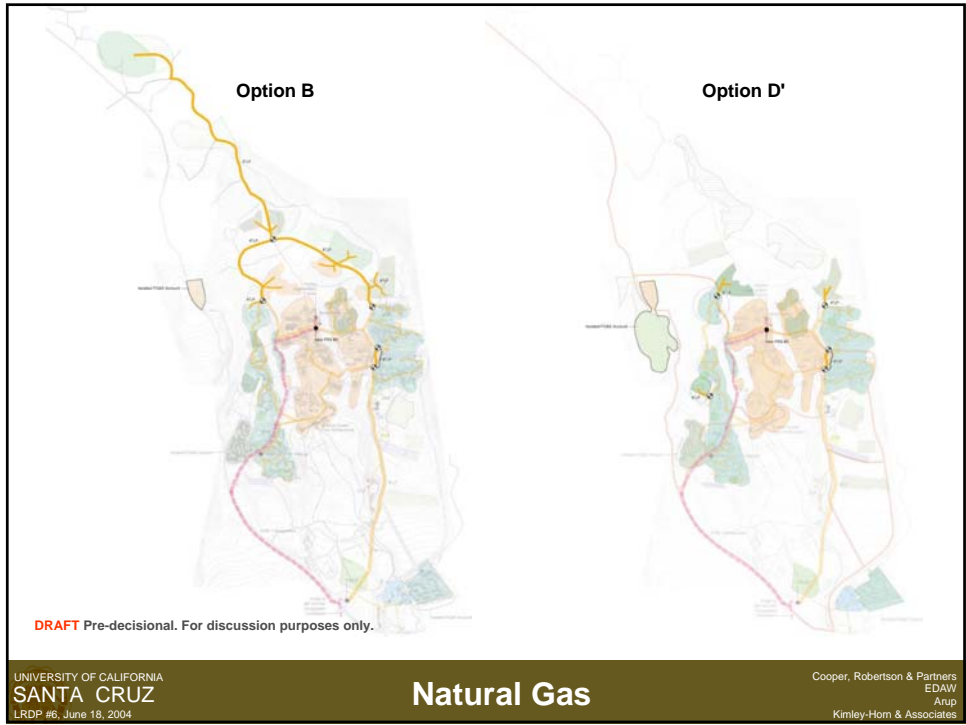
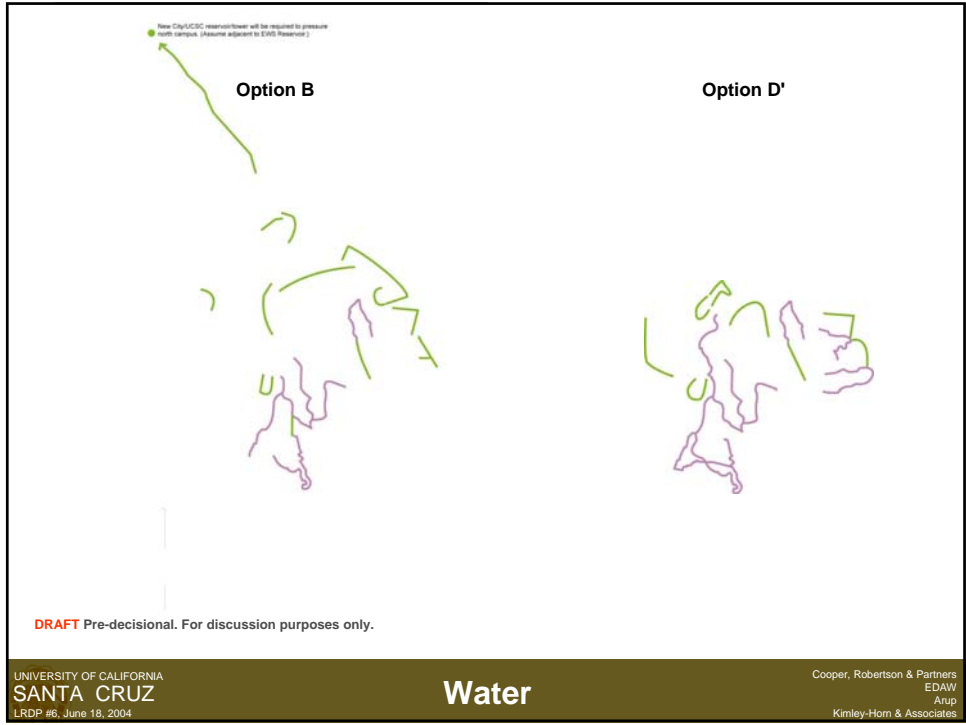
Infrastructure Considerations University of California Santa Cruz

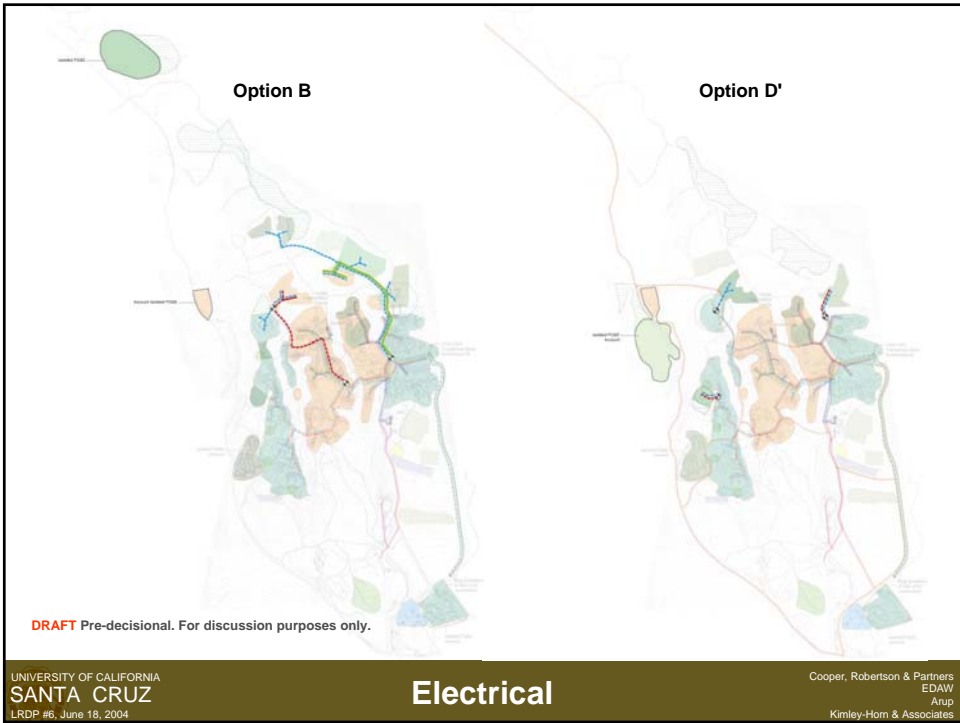
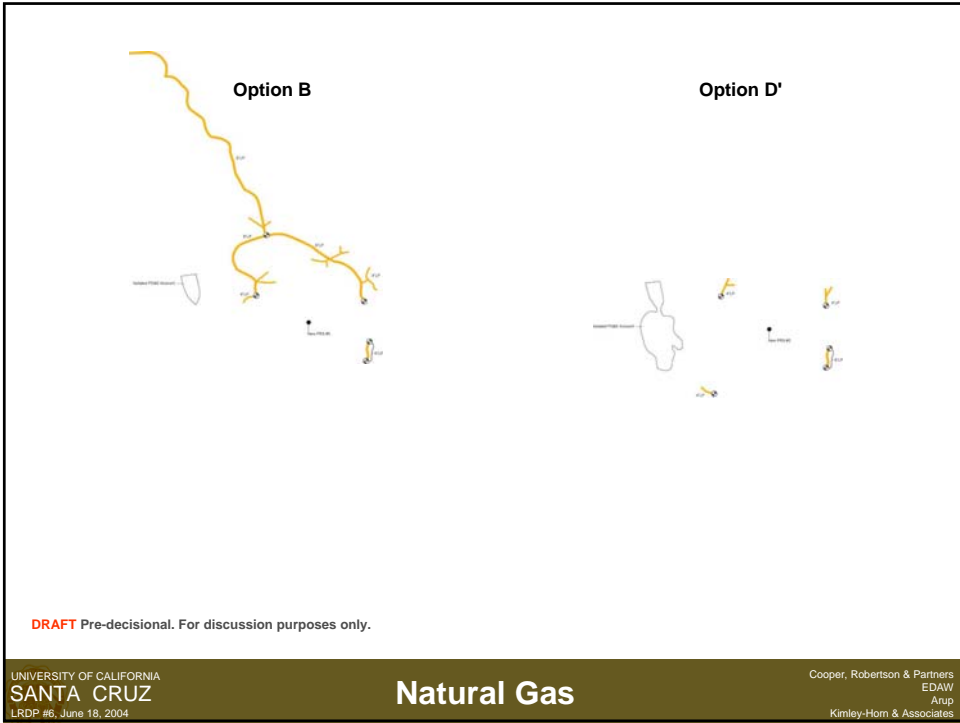
June 17, 2004

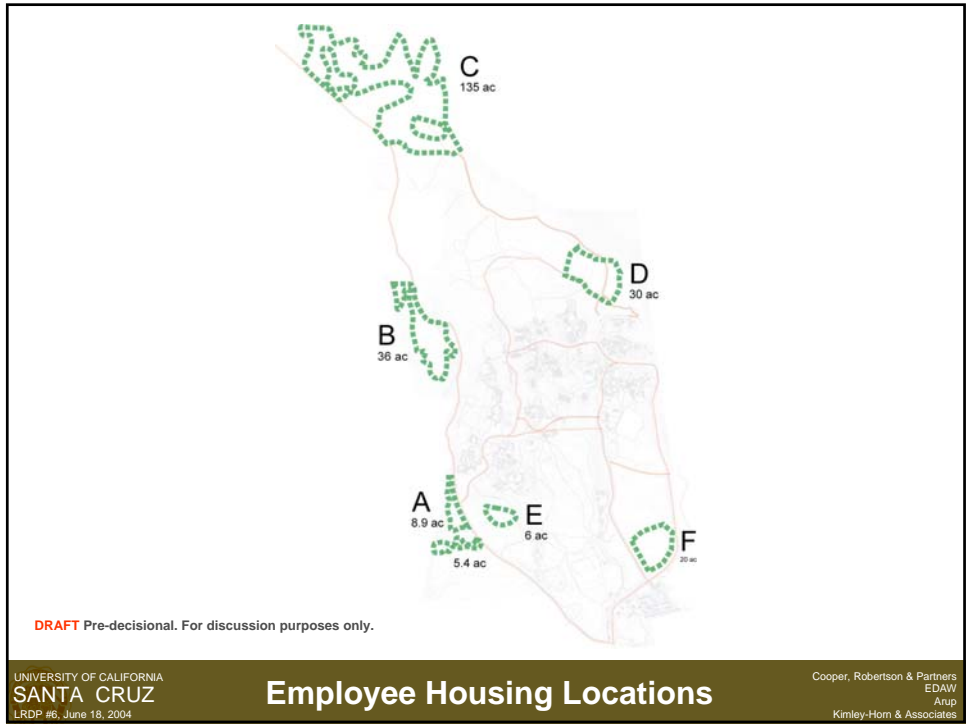
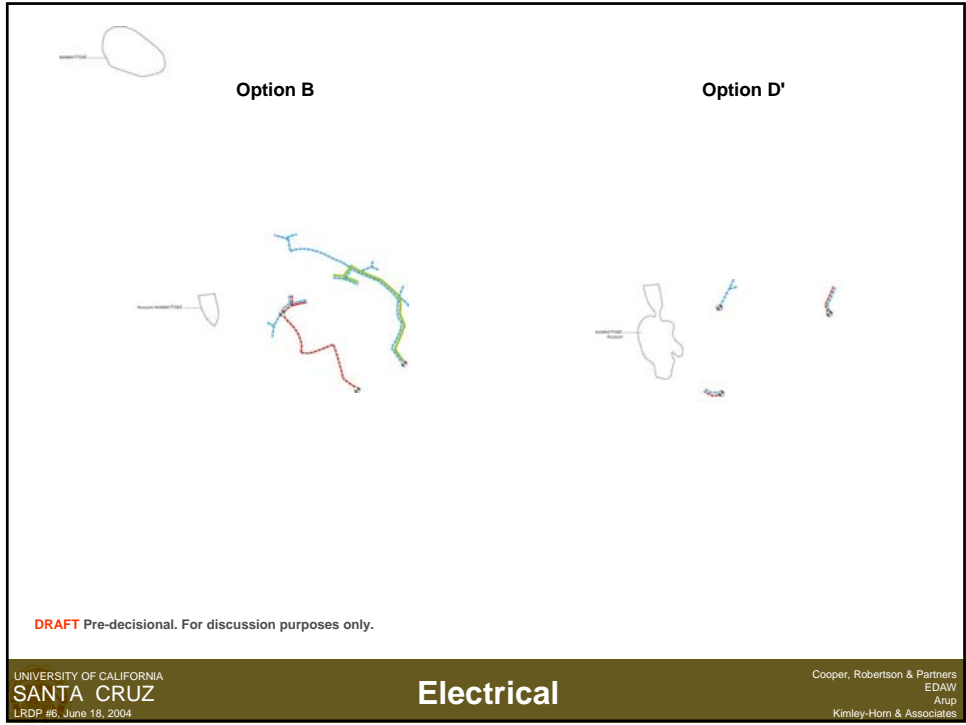
UNIVERSITY OF CALIFORNIA
SANTA CRUZ
LRDP #6, June 18, 2004

Cooper, Robertson & Partners
EDAW
Arup
Kimley-Horn & Associates









- Isolated Gas account
- Isolated Electrical account
- Integrated into Campus Water and Sewer

A
8.9 ac
5.4 ac

DRAFT Pre-decisional. For discussion purposes only.

UNIVERSITY OF CALIFORNIA
SANTA CRUZ
LRDP #6, June 18, 2004

Employee Housing, Location A

Cooper, Robertson & Partners
EDAW
Arup
Kimley-Horn & Associates

- Extend Campus Gas
- Isolated Electrical account
- Integrated into City Water
- Extend Campus or City Sewer

B
36 ac

DRAFT Pre-decisional. For discussion purposes only.

UNIVERSITY OF CALIFORNIA
SANTA CRUZ
LRDP #6, June 18, 2004

Employee Housing, Location B

Cooper, Robertson & Partners
EDAW
Arup
Kimley-Horn & Associates

C
135 ac

- Extend Campus Gas
- Extend Electrical
- Extend Campus or City Water
- Add new water reservoir / tower
- Extend Campus Sewer

DRAFT Pre-decisional. For discussion purposes only.

UNIVERSITY OF CALIFORNIA
SANTA CRUZ
LRDP #6, June 18, 2004

Employee Housing, Location C

Cooper, Robertson & Partners
EDAW
Arup
Kimley-Horn & Associates

D
30 ac

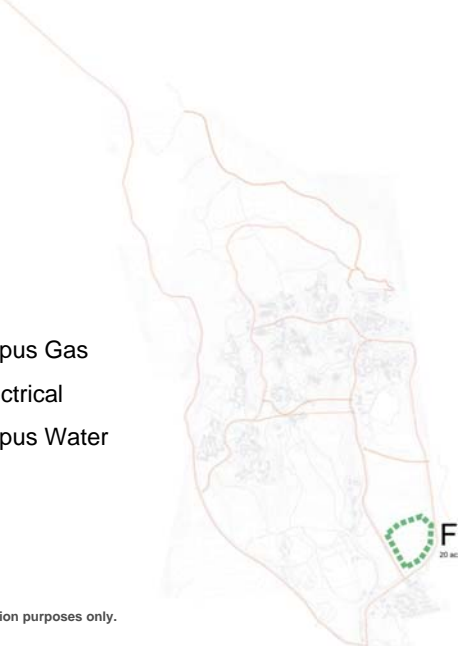
- Extend Campus Gas
- Extend Campus Electrical
- Integrated into Campus Water
- Extend Campus Sewer

DRAFT Pre-decisional. For discussion purposes only.

UNIVERSITY OF CALIFORNIA
SANTA CRUZ
LRDP #6, June 18, 2004

Employee Housing, Location D

Cooper, Robertson & Partners
EDAW
Arup
Kimley-Horn & Associates



- Integrated into Campus Gas
- Extend Campus Electrical
- Integrated into Campus Water and Sewer

DRAFT Pre-decisional. For discussion purposes only.

UNIVERSITY OF CALIFORNIA
SANTA CRUZ
LRDP #6, June 18, 2004

Employee Housing, Location F

Cooper, Robertson & Partners
EDAW
Arup
Kimley-Horn & Associates