

Retention and Graduation Rates at UC Santa Cruz

Forum on Undergraduate Retention Issues
January 10, 2006

Julian Fernald, Ph.D.

Director of Institutional Research and Policy Studies

Retention and Graduation Rate Methodology

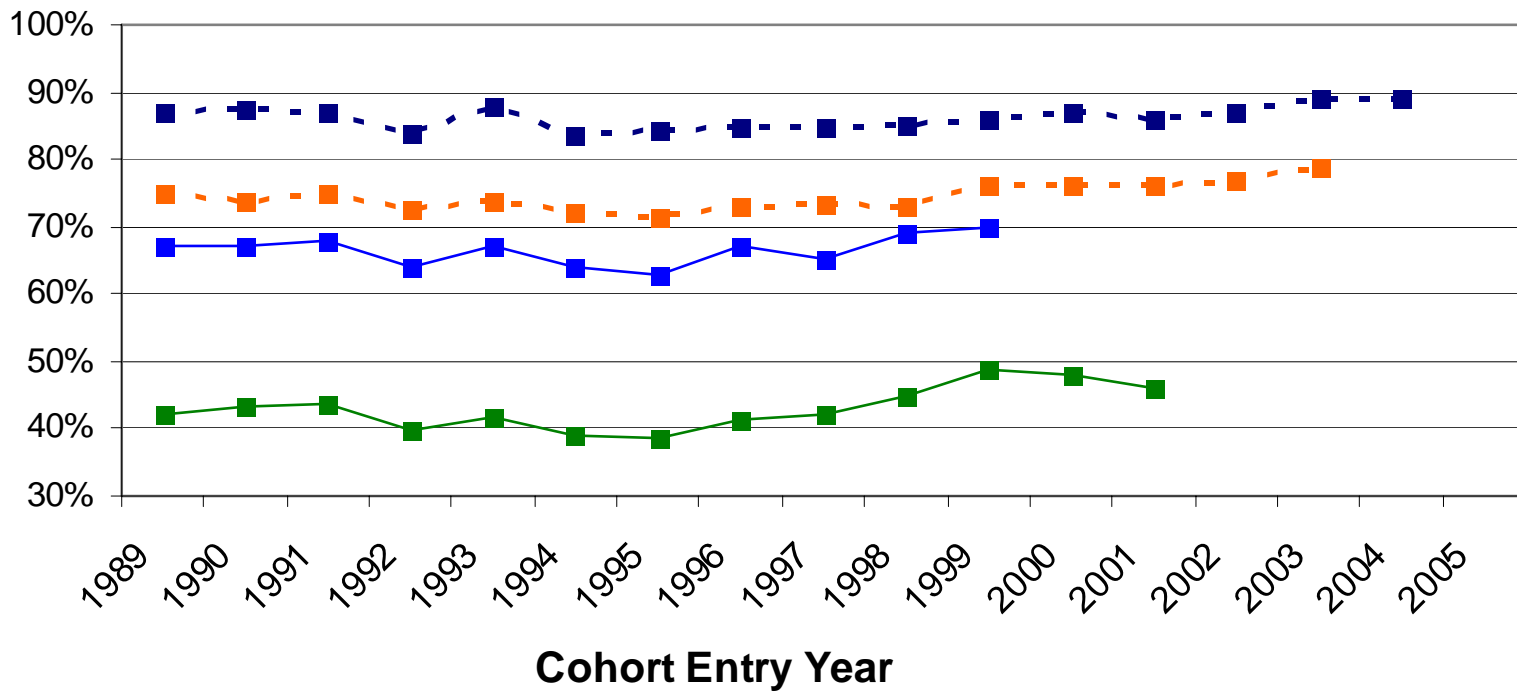
- Fall to fall retention rates year by year and graduation rates have been formally tracked for entering fall freshmen and transfer cohorts beginning with the entering students of 1989.
- Rates are tracked by college, gender, ethnicity, and SAT score ranges.
- Other areas of interest not currently regularly tracked: HS API, 1st generation college status, and major.

Most Recent UCSC Freshmen Rates

- 1 Year retention: 89% (2004 cohort)
- 2 Year Retention: 79% (2003 cohort)

- 4 Year Graduation: 46% (2001 cohort)
- 5 Year Graduation: 66% (2000 cohort)
- 6 Year Graduation: 70% (1999 cohort)

UCSC Entering Freshmen Historical Retention and Graduation Rates



■ 1 Year Retention
 ■ 2 Year Retention
 ■ 4 Year Graduation
 ■ 6 Year Graduation

UCSC Graduation Rates in Context: External Comparisons

National sample of 4 Year Institutions (1994 cohorts)

	National	UCSC	differnece
6 Yr Grad Rate	58%	65%	8%

NCAA Division I (1996 cohorts)

	NCAA Div. I	UCSC	difference
6 Yr Grad Rate	59%	67%	8%

UC Campuses Average (1998 cohorts)

	UC Avg.	UCSC	difference
6 Yr Grad Rate	78%	69%	-9%

UCSC Graduation Rates in Context: Predicted vs. Actual

Entry Year	N	6 Year Grad Rate	
		Predicted	Actual
1994	1,753	61.7%	63.4%
1995	1,794	61.4%	62.6%
1996	1,970	65.1%	66.8%
1997	2,082	65.7%	65.4%
1998	2,309	65.5%	69.4%
1994-98	9,908	64.0%	65.8%

Predicted vs. Actual Graduation Rates by Gender and Ethnicity

1994-98 cohorts

	N	6 Year Grad Rate	
		Predicted	Actual
Women	6,037	64.9%	67.4%
Men	3,871	62.5%	63.2%
African-American	247	51.0%	55.9%
Asian	1,493	65.7%	63.8%
Chicano/a	961	47.5%	59.5%
Other Latino/a	432	58.2%	65.5%
Native American	110	49.2%	60.0%
White	5,455	67.7%	67.5%
Other	294	62.9%	67.4%
Unknown ¹	916	67.1%	68.1%

Predicted vs. Actual Graduation Rates by Academic Preparation

1994-98 cohorts

SAT I Combined	N	6 Year Grad Rate	
		Predicted	Actual
high quintile (1250-high)	1,871	74.2%	66.5%
4th quintile (1160-1240)	1,694	68.9%	66.5%
3rd quintile (1080-1150)	1,819	65.7%	68.4%
2nd quintile (970-1070)	2,066	61.7%	65.0%
low quintile (low-960)	1,906	51.9%	60.0%